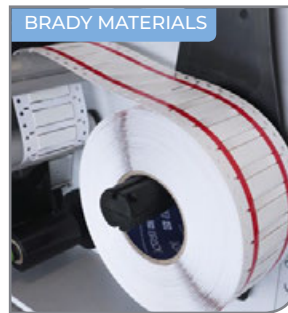
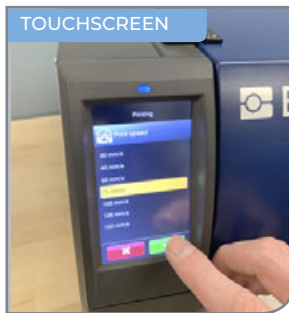
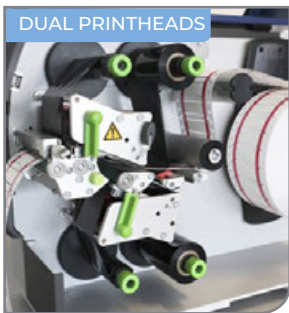




HIGH VOLUME IN HALF THE TIME

BBP72-PLUS DOUBLE-SIDED SLEEVE PRINTER



Save time. Minimise waste. Reduce sleeving errors.

Heavy duty, high-accuracy printing to get the job done right

Get more with enhanced capabilities:

- ▶ High-volume, double-sided sleeve printing
- ▶ Pairs with Brady Workstation software
- ▶ Integrates with ERP/SAP systems
- ▶ Crisp, clear printing – 300 dpi resolution
- ▶ Large colour touchscreen
- ▶ Smooth printing on heat-resilient Brady materials

PRINT MORE. WASTE LESS.



SEAMLESS, ONE-PASS OPERATION



AUTO PRINTING;
AUTO FORMATTING



LESS SLEEVE AND
RIBBON WASTE

BBP72-PLUS

DOUBLE-SIDED SLEEVE PRINTER

THE ULTIMATE SLEEVING SOLUTION

Physical properties

Width x Height x Depth (mm)	248.00 x 393.70 x 594.36
Weight (kg)	21
Print Technology	Thermal Transfer
Print Resolution (dpi)	300
Print Speed (mm/sec)	200.00
Max. Print Width (mm)	105.66

Material

Min. Label Width (mm) x Max. Label Width (mm)	10.00 x 109.98
Max. Roll Outer Diameter (mm)	299.72
Core diameter (mm)	76.20

Electronics

Internal Memory Capacity	256 MB RAM, 50 MB IFFS Flash, SD card up to 512 GB
Media Sensor	Black Mark, Gap Sensor, Notch, Ribbon End

Barcode

Bar Code Type	Codabar, Code 128A, Code 128B, Code 128C, Code 39, Code 39 Full ASCII, Code 93, EAN-13, EAN-8, EAN/UCC 128, EAN/UPC Extension 2, EAN/UPC Extension 5, FIM, GS1-128, HIBC, Interleaved 2 of 5, JAN-13, JAN-8, MSI, Plessey, POSTNET, UPC-A, UPC-E, UPC-E0, Data Matrix, GS1 DataMatrix, MicroPDF417, PDF417, QR code
---------------	---------------------------------------------------------------------------------------------------------------------------------------------------------------------------------------------------------------------------------------------------------------------------------------------------------------------

Fonts

Font Styles	Bitmap Default Font - 12x12 dots, Bitmap Default Font - 16x16 dots, Bitmap Default Font - 16x32 dots, Monospace 821, OCR-A Size I, OCR-B, Swiss 721, Swiss 721 Bold, TrueType fonts storable to printer
-------------	---------------------------------------------------------------------------------------------------------------------------------------------------------------------------------------------------------

Operation data

Power Supply	100 - 240 V ~50/60 Hz, PFC
Operating Temperature	5°C - 35°C
Operating Humidity	10%-85% (non-condensing)
Approval/Compliance	CE, FCC class A, CB, CCC, UL
Display	Colour LCD Touchscreen
Stand-alone Printing (Detached from PC)	Stand-alone & Peripheral

For more information and part numbers on Brady's complete line of PermaSleeve® and Heatex™ sleeves visit www.bradyeurope.com

Printer

Article No.	Description
176486	BBP72-PLUS Double-Sided Sleeve Printer



► **Learn more at www.bradyeurope.com/BBP72-PLUS or contact your Brady representative**