

SOLDER SMART

SOLDER SMART

Automated and reproducible robotic soldering with highest precision!

The Ersa SOLDER SMART works with the powerful i-TOOL soldering iron, which has been proven thousands of times in the industry. Its heating power of 150 W enables efficient soldering processes at a stable soldering temperature and the use of very fine soldering tips 0.4 mm up to wide tips up to 5 mm and more!

The SOLDER SMART has a high-precision and low-maintenance axis system, whose x-y portal offers a large working area of 500 x 400 mm. Two separate z-axes ensure precise and almost force-free positioning of the soldering tip. By means of a rotary axis, each solder joint can be approached from any direction. For optimized throughput, the unit is equipped with two automatically locking drawers.

The SOLDER SMART allows programming of single soldering, flow soldering with pre-soldered soldering tip at contact distances or drag soldering (line soldering). The solder wire feed rate, preheating time and soldering time can be individually and precisely adapted to the soldering heat requirements of each solder joint.

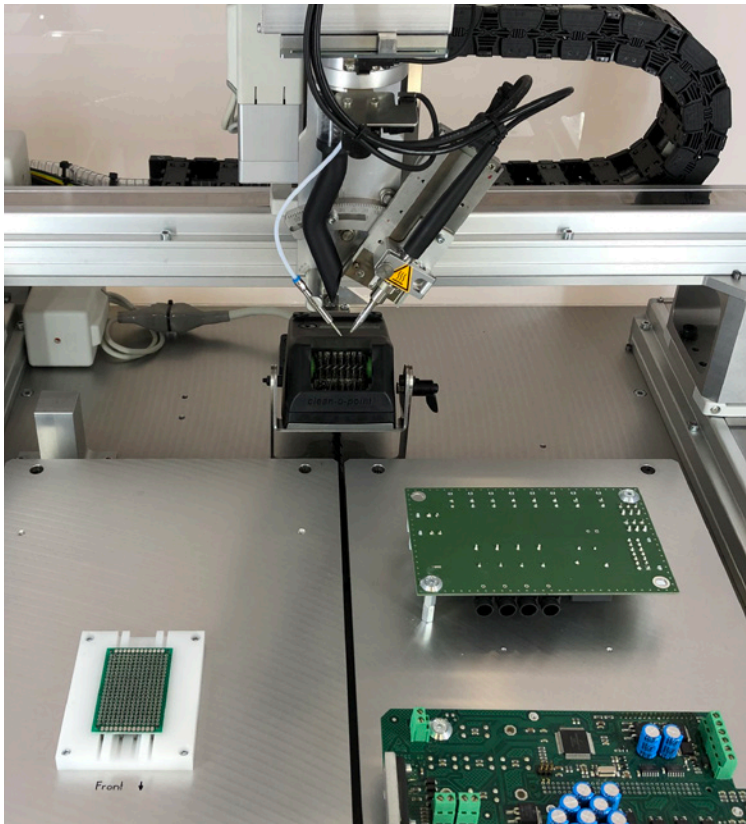
Individually adjustable cleaning intervals with a rotating brush system ensure maximum availability and safe processes. For setup and process monitoring the SOLDER SMART is equipped with a USB camera, which provides the highest level of detail accuracy.

The system is designed for the connection to an Ersa EASY ARM 1 solder fume extraction system, which removes the soldering fumes in the direct vicinity of the soldering point.

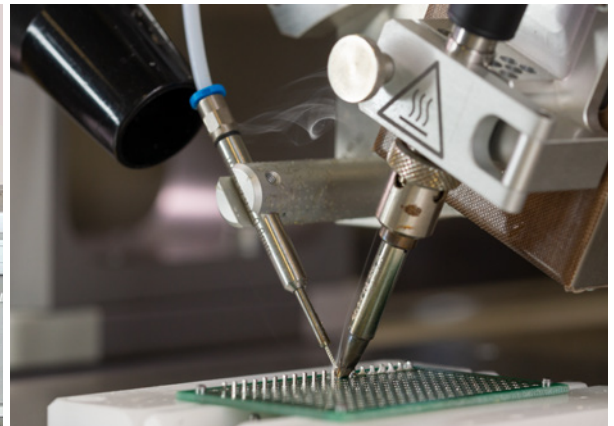
An ESD-safe housing guarantees safe operation and protects the compact table-top unit from contamination. The integrated LED elements ensure uniform illumination of the working area.

Your Benefits:

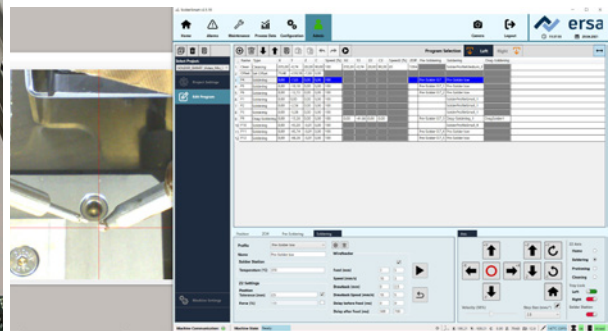
- Highest precision and excellent reliability due to the proven Ersa i-CON technology and the precise solder wire feeding
- Increased productivity due to the double drawer system, which enables continuous production
- Achieves significant cost savings compared to hand soldering
- Simple & intuitive programming
- Complete traceability of the soldering process
- Individual services for everything around robot soldering:
 - Analysis & test soldering, training
 - Creation of customized work-piece carriers
 - Service & maintenance
 - Online support



Soldering applications in the drawers of the SOLDER SMART



Powerful i-TOOL with precise solder wire feeder and integrated exhaust system for the solder fumes



Precise, easy-to-program axis system

Technical data:

Dimensions (W x D x H)	880 x 880 x 830 mm (with hood)
Weight:	approx. 100 kg
Design:	antistatic
Power rating:	max. 1,500 W
Supply voltage:	200 – 230 V / 50 – 60 Hz, max. 6 A 100 – 120 V / 50 – 60 Hz, max. 6 A
Soldering system:	Ersa i-CON 1 with 150 W i-TOOL soldering iron
Axis accuracy:	±0.02 mm
Component size in mm:	all common THT components
Work surface:	500 x 400 mm (without drawers)
Work surface (per drawer):	approx. 240 x 382 mm
Camera:	5 MP USB color camera, resolution (2,592 x 1,944 px)
Test symbol:	CE
Operating software:	suitable for Windows 8 and Windows 10

Order information:

Order No.	Description
0SR500	SOLDER SMART – soldering robot Automated and reproducible robotic soldering with highest precision!



further information
on our website or
webshop

Ersa GmbH
Leonhard-Karl-Str. 24
97877 Wertheim
Germany

Tel. +49 9342 800-0
Fax +49 9342 800-127
info@ersa.de
www.ersa.com

France:
kefrance@kurtzersa.com
America:
usa@kurtzersa.com

Mexico:
info-kmx@kurtzersa.de
China:
asia@kurtzersa.com

