

Off-cut remover HEKTOR 2



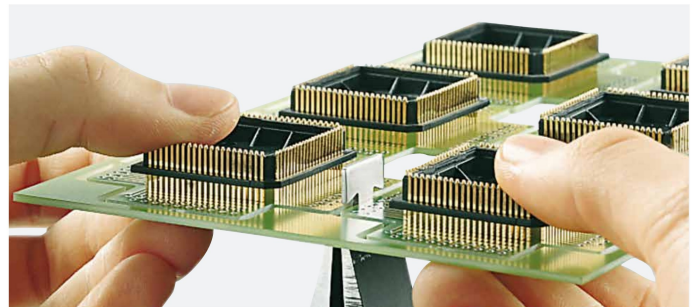
Technical data	
Separation method	Punch blade
Operation	manual
Material	FR4
PCB thickness	up to 2.5 mm
Air pressure supply	1/4" coupling socket
Operating pressure, typical	4 bar
Temperature / humidity	Operation + 10 - 35°C / 10 - 85 %
	Stock 0 - 60°C / 20 - 80 %
not condensing	Transport - 25 - 60°C / 20 - 80 %
Width x Height x Depth	220 x 170 x 255 mm
Weight	2.7 kg
Approvals	CE, FCC Class A

PCBs are separated carefully and quickly, off-cuts are removed precisely and smoothly. A two-part matrix enables the different blades to be assembled resp. exchanged easily. Off-cuts are punched out with the help of a compressed air cylinder. The operating pressure can be set on the unit.

Safe operation

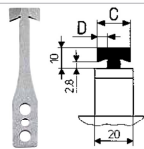
PCBs are positioned with their milled groove over the blade onto the matrix. The off-cut is fed below the punch blade. A foot switch triggers the punching and the off-cut is collected in the bottom tool.

Part no.	Product
8932145	Off-cut remover HEKTOR 2 (no blades)
8932xxx	Blade (to be ordered separately)
Scope of delivery	Off-cut remover with pressure regulator Foot switch Allen key 2 mm Allen key 4 mm Operator's manual DE/EN



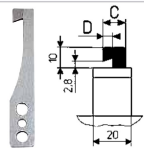
T blade

to punch out off-cuts on the right and left margins. Turning the PCB is not necessary



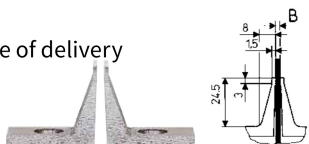
L blade

used with small distances between the off-cuts



Matrix

included in the scope of delivery



Blade

To prevent from getting stuck in the PCB, the milled groove should extend the blade width by at least 0.15 mm.

Part no.		Milled groove width	Blade width	Blade length	Cutting length	Solder side free of components	Milled groove length	Off-cut width
		A	B	C	D	E	F	G
8932137.001	Blade 1,5 T	≥ 1.5	1.35	17.2	4.7	> 19	> 19	3
8932138.001	Blade 2,0 T	≥ 2.0	1.85	17.2	5.2	> 19	> 19	3
8932191.001	Blade 2,4 T	≥ 2.4	2.25	18	5.7	> 19	> 19	3
8932139.001	Blade 2,5 T	≥ 2.5	2.35	18	5.7	> 19	> 19	3
8932144.001	Blade 3,0 T	≥ 3.0	2.85	18	5.7	> 19	> 19	2.5
8932122.001	Blade 1,5 L	≥ 1.5	1.35	12	4.7	> 15	> 13	3
8932123.001	Blade 2,0 L	≥ 2.0	1.85	12	5.2	> 15	> 13	3
8932141.001	Blade 2,4 L	≥ 2.4	2.25	12	5.7	> 15	> 13	3
8932124.001	Blade 2,5 L	≥ 2.5	2.35	12	5.7	> 15	> 13	3
8932125.001	Blade 3,0 L	≥ 3.0	2.85	12	5.7	> 15	> 13	2.5
8932171.001	Matrix (as a spare part)							

Further blade thicknesses on request

