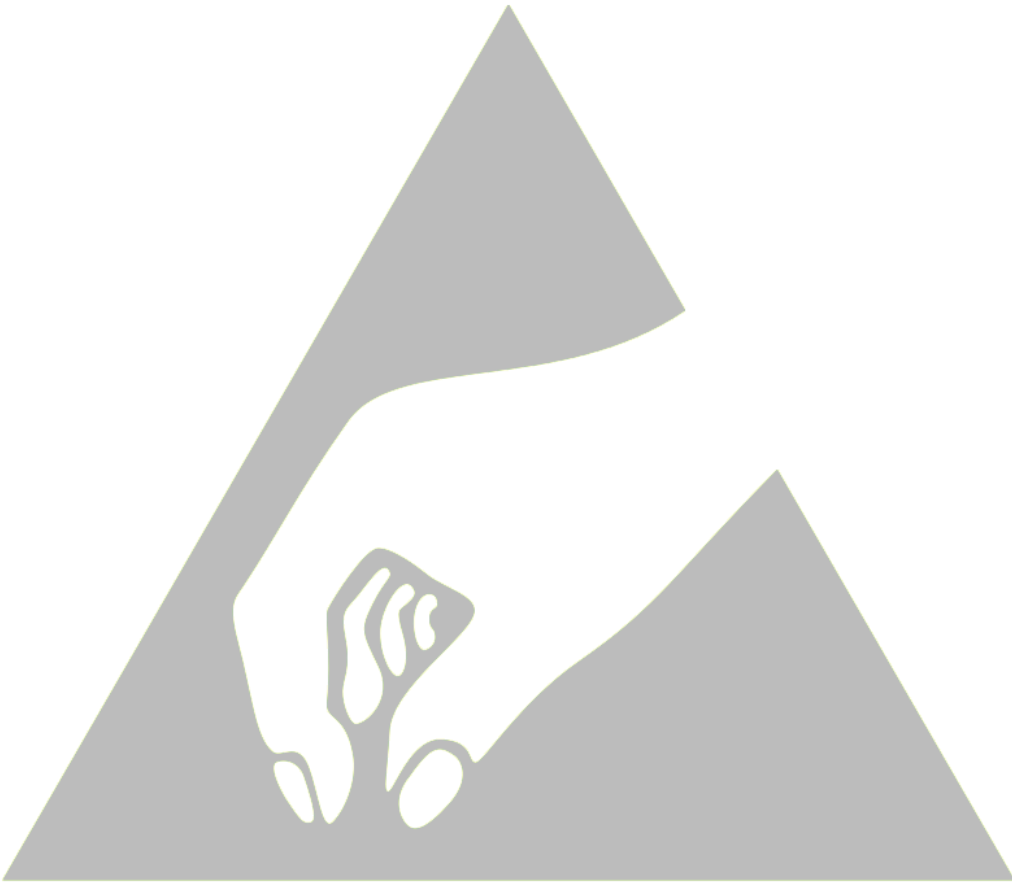


e-flex
smt
microsystems

E-FLEX ESD



ESD PROEJECT SOLUTION & SUPPLIER

About us

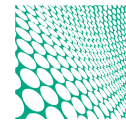


E-Flex SMT Microsystems supplies a wide range of the most innovative and reliable types of SMT (Surface Mount Technology) equipment and Electronic devices manufactured in East Asia. Our goal is to expand day by day into each country and to bring satisfaction to our customers, offering solutions at a cost-effective rate. We are constantly developing and improving our existing models of machinery in order to be up to date to the current levels of sophistication. Our full line of equipments and accessories is actually fitting every demand of our customer's SMT lines. We bring solutions to every need at a very reasonable cost.

Located in Hong Kong, Asia's World City and home of the Electronics industry in Asia, e-Flex SMT Microsystems services world-wide and it's looking nowadays for distributors in different countries.

We are experts in selecting the best choices of equipment and machinery under the demands of our clients.

With a combination of cost-effective rates and machinery expertise, e-Flex SMT Microsystems is the best choice you might have at the present moment as your SMT supplier.



In the electronic equipment industry, our goal is to continue being the most competitive design among all high-end manufacturers.

Antistatic PP Alloy Composite Plastic Material

Experimental Project	Unit	Experimental Methods and Requirements	P/E-MZ-2	P/E-MZ-3	P/E-MZ-6
Tensile strength	MPa	GB/T1040-1992	19.4	18.376	20.26
Elongation at break	%	GB/T1040-1992	52	20	10
Bending strength	MPa	GB/T9341-2000	20	22	30
Flexural modulus	MPa	GB/T9341-2000	1000	1020	1680
Charpy impact strength	KJ/m ²	GB/T1043-1993	12	10	12
	KJ/m ²	GB/T1043-1993	60	50	45
Volume resistivity	Ω-cm	GB/1410-1989	E4-E5	E4-E5	6.2*E05
Surface resistivity	Ω	GB/1410-1989	E5-E6	E4-E5	2.1*E06
Melt flow rate	g/10min	GB/3682-2000	3.5	3.62	2.04
Shrinkage	%	GB/15585-1995	1.35	/	/
Experimental environment: temperature 23 ° C, humidity 55%					

Anti-static polyphenylene ether composite engineering plastic

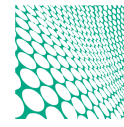
Experimental Project	Unit	Experimental Methods and Requirements	PPE-MZ-135	PPE-MZ-135	PPE-MZ-125
Tensile strength	MPa	GB/T1040.1-2006	73	73	73
Elongation at break	%	GB/T1040.1-2006	3.8	4.3	6.1
Bending strength	MPa	GB/T9341-2008	106	92	85
Flexural modulus	MPa	GB/T9341-2008	2880	2752	2550
Charpy impact strength	KJ/m ²	GB/T1043.1-2008	5.07	6.05	6.58
	KJ/m ²	GB/T1043.1-2008	45.17	48.9	50.05
Volume resistivity	Ω-cm	GB/1410-2006	(min)1.56x10 ⁵	(min)3.67x10 ⁵	(min)5.56x10 ⁵
			(max)4.26x10 ⁵	(max)2.43x10 ⁵	(max)1.61x10 ⁵
Surface resistivity	Ω	GB/1410-2006	(min)1.58x10 ⁵	(min)2.36x10 ⁵	(min)3.50x10 ⁵
			(max)7.95x10 ⁵	(max)7.95x10 ⁵	(max)7.95x10 ⁵
Melt flow rate 290 °C/10kg	g/10min	GB/3682-2000	7.8	9.5	12.3
Shrinkage	%	GB/15585-1995	0.5	0.5	0.5
Heat distortion temperature (1.82Mpa/4x10mm flat)	°C	GB/T1634.X-2004	153	141	130
Experimental environment: temperature 23 ° C, humidity 55%					

Anti-static PC/ABS alloy composite engineering plastic

Experimental Project	Unit	Experimental Methods and Requirements	PC/ABS-MZ
Tensile strength	MPa	GB/T1040.1-2006	45
Elongation at break	%	GB/T1040.1-2006	20
Bending strength	MPa	GB/T9341-2008	77
Flexural modulus	MPa	GB/T9341-2008	2423
Charpy impact strength	KJ/m ²	GB/T1043.1-2008	20
	KJ/m ²	GB/T1043.1-2008	99.43
Volume resistivity	Ω-cm	GB/1410-2006	2.8*E07
Surface resistivity	Ω	GB/1410-2006	1.5*E06
Melt flow rate 290 °C/10kg	g/10min	GB/3682-2000	6.54
Shrinkage	%	GB/15585-1995	0.45
Heat distortion temperature	°C	GB/T1634.X-2004	110
Experimental environment: temperature 23 ° C, humidity 55%			

Anti-static PS composite plastic

Experimental Project	Unit	Experimental Methods and Requirements	PC/ABS-MZ
Tensile strength	MPa	GB/T1040.1-2006	25
Elongation at break	%	GB/T1040.1-2006	5.6
Bending strength	MPa	GB/T9341-2008	35
Flexural modulus	MPa	GB/T9341-2008	2100
Charpy impact strength	KJ/m ²	GB/T1043.1-2008	5.5
	KJ/m ²	GB/T1043.1-2008	32
Volume resistivity	Ω-cm	GB/1410-2006	2.1*E06
Surface resistivity	Ω	GB/1410-2006	1.2*e06
Melt flow rate 290 °C/10kg	g/10min	GB/3682-2000	6.1
Shrinkage	%	GB/15585-1995	0.5
Heat distortion temperature 1.82MPa/4x10mm flat	°C	GB/T1634.X-2004	80
Experimental environment: temperature 23 ° C, humidity 55%			

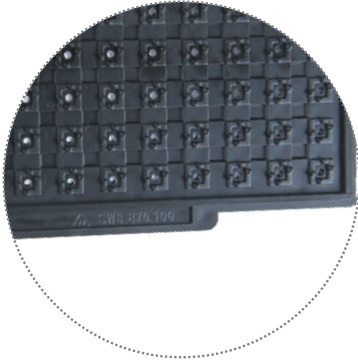


ESD IC Tray

IC tray is a semiconductor packaging and testing company for its chip (IC) packaging test packaging tray used.

China Manufacturing 2025 plan clearly requires mastery High-density packaging and three-dimensional (3D) micro-assembly technology to enhance the packaging industry and testing the ability to develop independently, forming key manufacturing equipment supply force

Our product is suitable for high resistance temperature, anti-curvature deformation, high rigidity, high precision anti-static IC tray production, and has successfully designed and developed IC trays for a research institute.

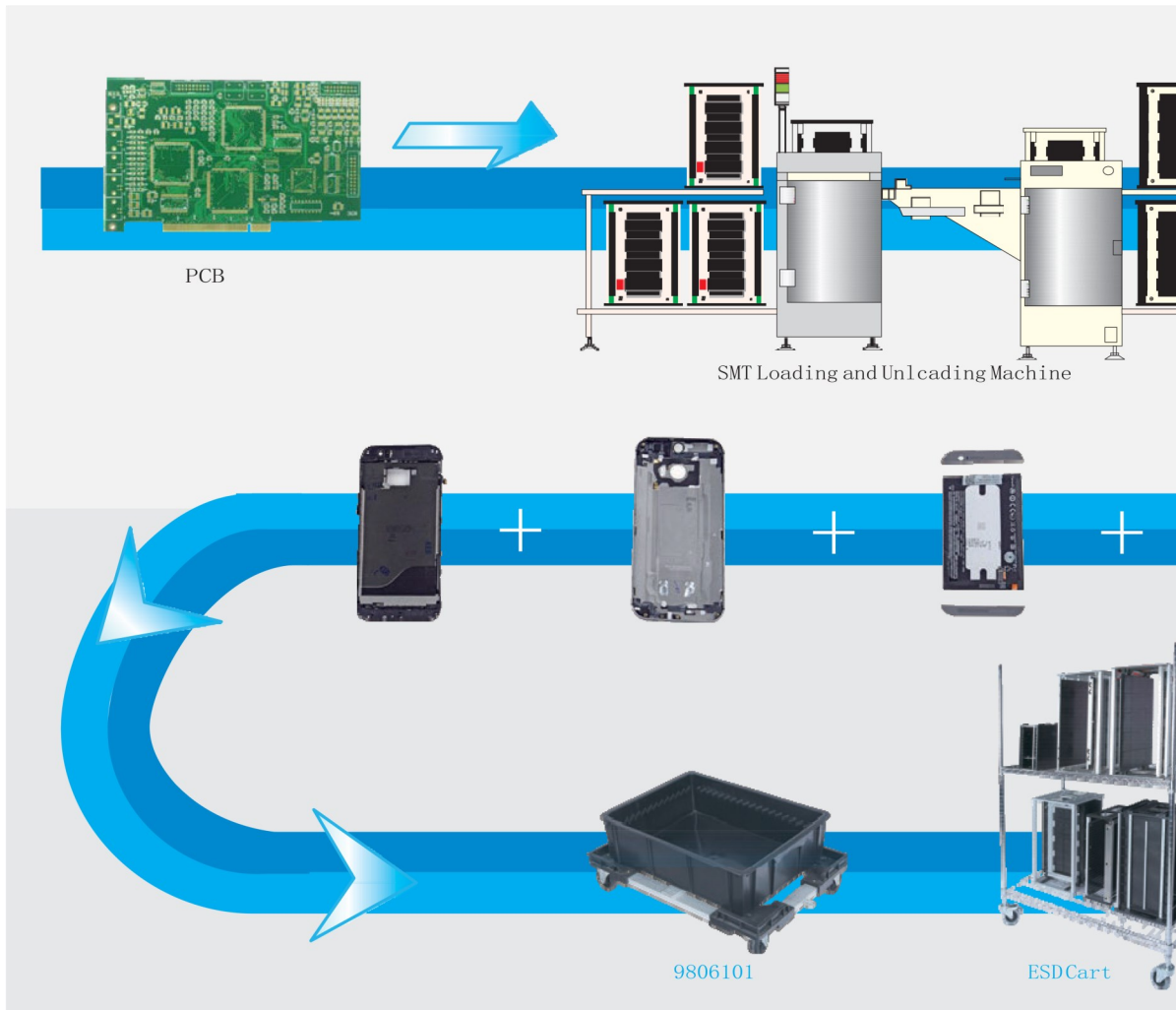
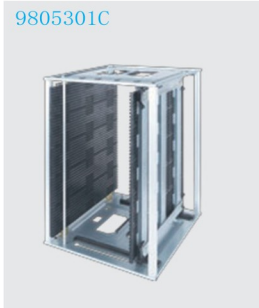


Anti-static IC Packing Bin

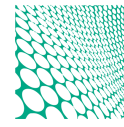
The traditional method of integrated circuit packaging is to use an antistatic sponge, the lining is placed in an anti-stat- ic container, which is very easy to cause pin deformation damage.

IC packaging box can effectively solve the problem of pin deformation, and protect the safety of the barrier product. Our products are successfully designed and developed IC package for a research institute packing.





ESD PROJECT SUPPLIER



e-flex
smt
microsystems

E-Flex ESD

9805301F



9805301B5



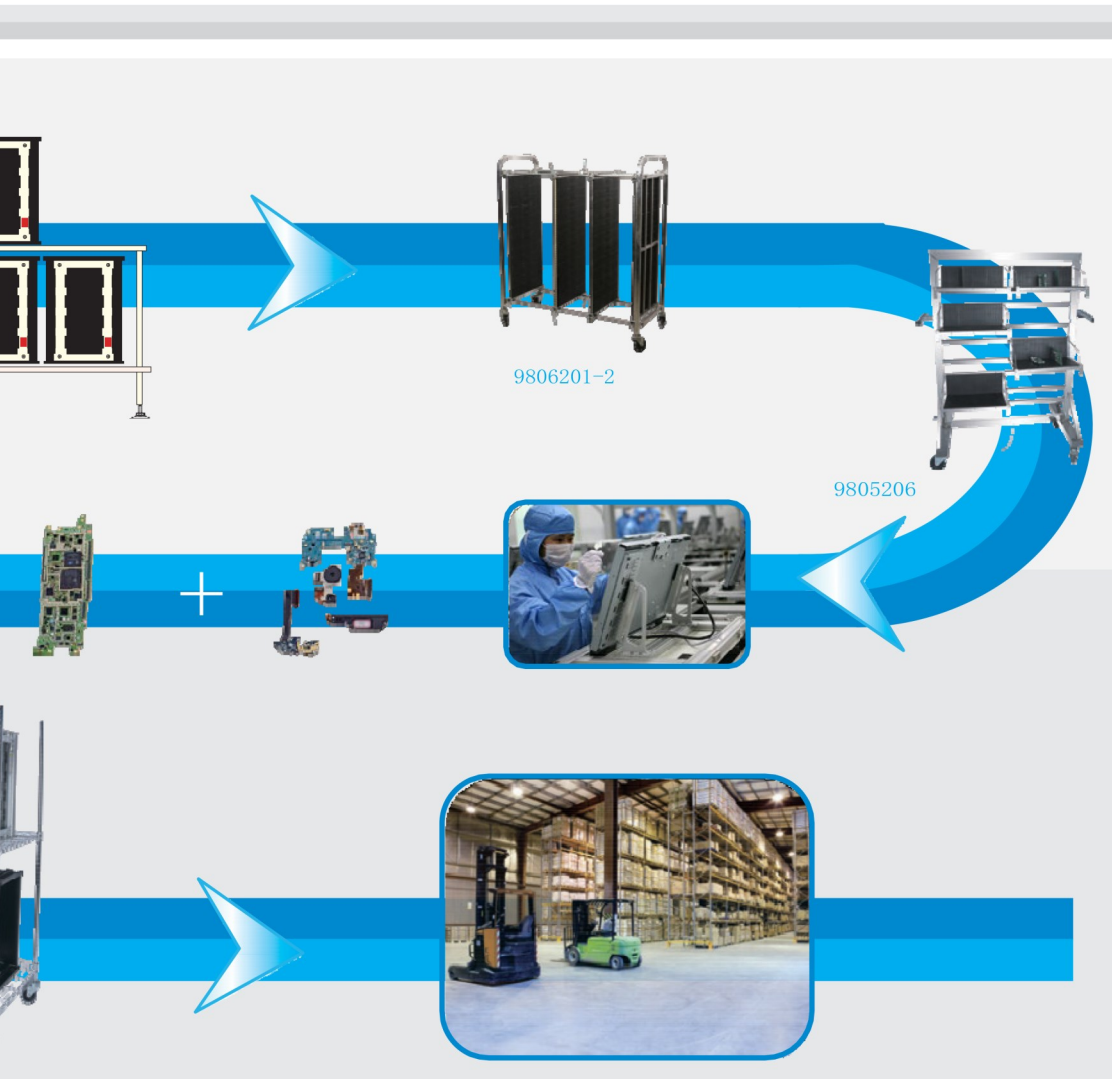
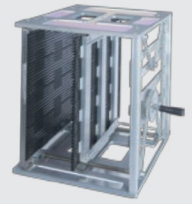
9805301B5-1



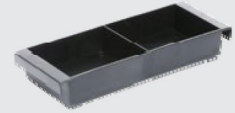
9805801



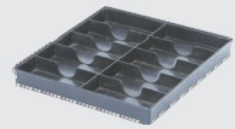
9805809



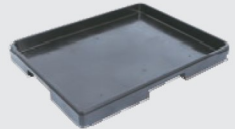
9805120-2



9805122



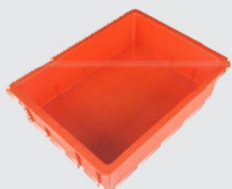
9805116



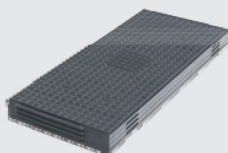
9805127



ESD Red Box



ESD IC Tray



dust cover



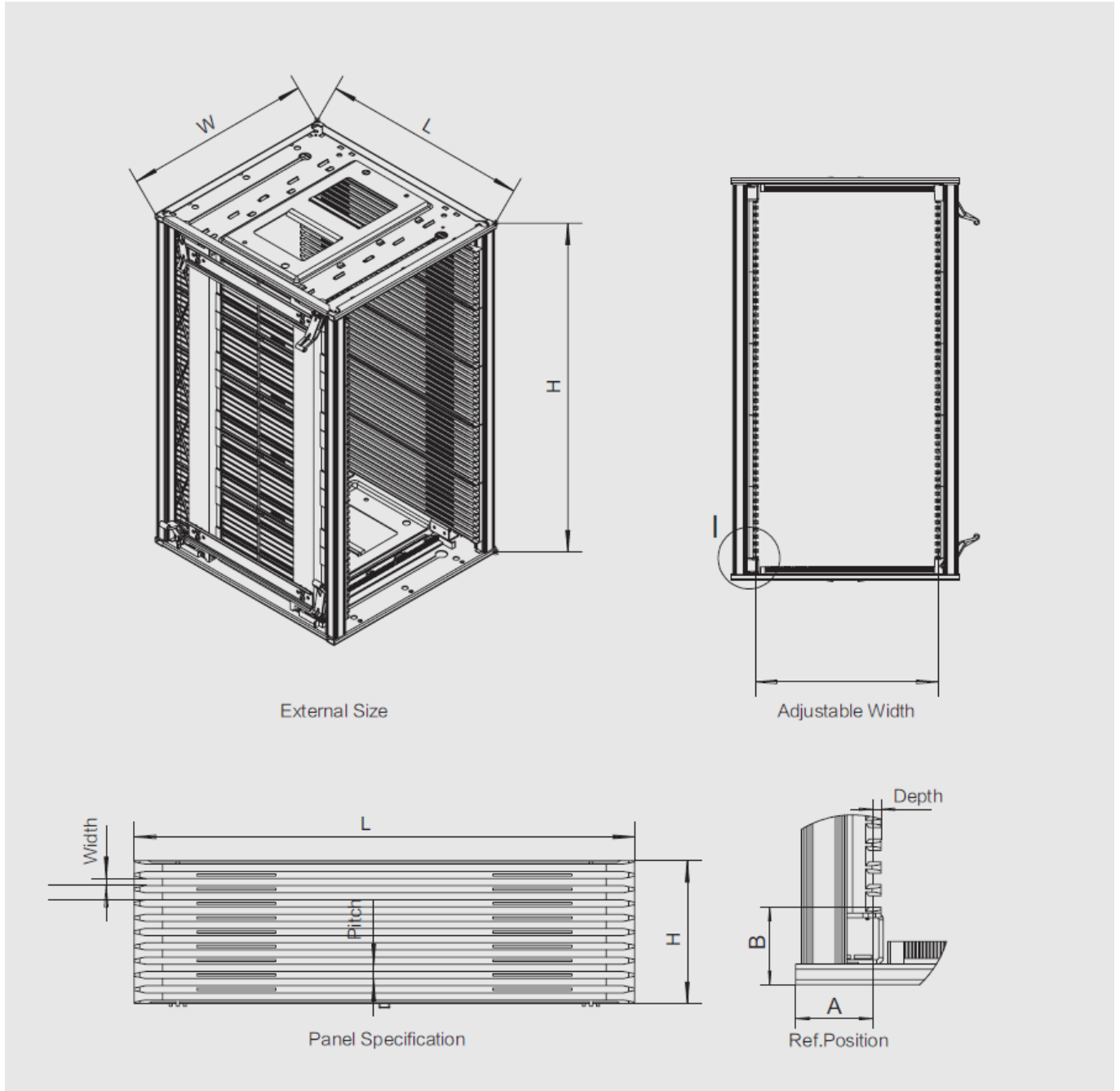
Slot Stopper



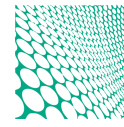
Label Holder



ESD Magazine Rack



1. 9805301 series SMT ESD Magazine Rack with various specification and suitable for international standard Machine Production.
2. If use high-temperature gear racks and fasteners , it can be directly enter the oven.
3. Definition of temperature resistance: the instantaneous temperature of the PCB board



ESD Magazine Rack

9850301B1



9850301A



9850301C



9850301B2-2



Model	Adjustable Type	External Size(mm)	Depth (mm)	Width (mm)	Pitch (mm)	PCB slots	Adjustable Width(mm)	Ref.Position A	B	Side Board Structure	Base Material	Heatresistant Temp(°C)	Weight (kg)
9805301A	Screw adjustment	355×315×580	3.5	7	10	50	90-250	34	35.5	Whole Panel	Plastic	80	5.74
9805301B1	Handle(Gear track) Adjustment	355×320×563	3.5	5	10	50	40-250	34	34	5 Sheet Combined panel	Metal	100/120/150	5.51
9805301B1-1	Screw adjustment	355×320×563	3.5	5	10	50	30-250	34	34	5 Sheet Combined panel	Metal	100/120/150	5.33
9805301B1-4	Handle(Gear track) Adjustment	355×320×563	3.5	7	20	25	40-250	34	34	5 Sheet Combined panel	Metal	100/120/150	
9805301B1H	Screw adjustment	355×320×563	3.5	5	10	50	30-250	34	34	5 Sheet Combined panel	Metal	200	5.875
9805301B2	Handle(Gear track) Adjustment	355×320×563	3.5	5	10	50	40-250	34	34	5 Sheet Combined panel	Plastic	100/120/150	4.1
9805301B2-1	Screw adjustment	355×320×563	3.5	5	10	50	30-250	34	34	5 Sheet Combined panel	Plastic	100/120/150	4.07
9805301B2-2	Handle(Gear track) Adjustment	400×320×573	3.5	5	10	50	40-250	34	39	5 Sheet Combined panel	Plastic	100/120/150	5.365
9805301C	Handle(Gear track) Adjustment	460×400×563	3.5	5	10	50	80-330	34	34	5 Sheet Combined panel	Metal	100/120/150	7.83
9805301C-3	Screw adjustment	460×400×563	3.5	5	10	50	30-330	34	34	5 Sheet Combined panel	Metal	100/120/150	7.49

ESD Magazine Rack

9805301Q



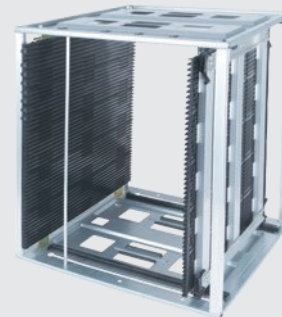
9805301D



9805301F



9805301E



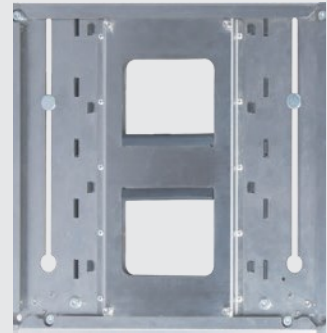
Model	Adjustable Type	External Size(mm)	Depth (mm)	Width (mm)	Pitch (mm)	PCB slots	Adjustable Width(mm)	Ref.Position A	Ref.Position B	Side Board Structure	Base Material	Heat resisitant Temp(°C)	Weight (kg)
9805301D	Handle(Gear track) Adjustment	535×460×569	3.5	5	10	50	50-380	34	37	5 Sheet Combined panel	Metal	100/120/150	9.51
9805301D-1	Screw adjustment	535×460×569	3.5	5	10	50	40-390	34	37	5 Sheet Combined panel	Metal	100/120/151	9.295
9805301E	Handle(Gear track) Adjustment	535×530×570	3.5	5	10	50	60-450	34	37	5 Sheet Combined panel	Metal	100/120/152	10.195
9805301E-1	Screw adjustment	535×530×570	3.5	5	10	50	50-460	34	37	2 Sheet Combined panel	Metal	100/120/153	9.98
9805301F	Screw adjustment	630×530×569	3.5	6.5	10	50	30-450	38	37	2 Sheet Combined panel	Metal	100/120/154	12.455
9805301Q	Handle(Gear track) Adjustment	355×320×563	3.5	5	10	50	30-250	34	34	5 Sheet Combined panel	Metal	100/120/155	5.625

ESD Magazine Rack Base

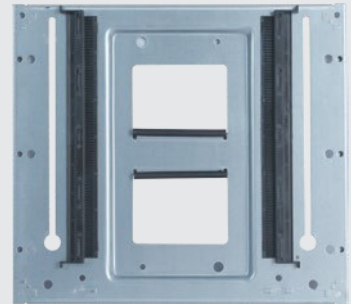
980301B5-1 Base



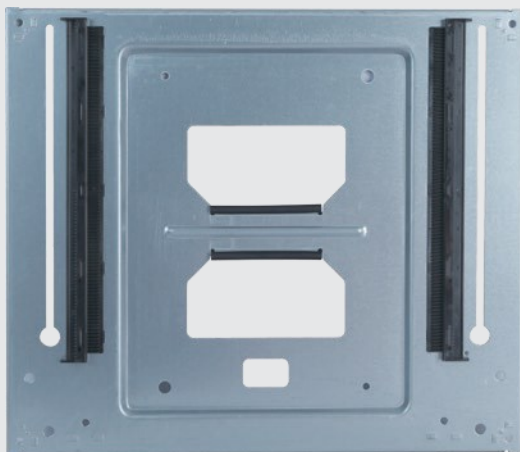
980301B5 Base



9805301C Base



9805301B1 Base



9805809 Base



980301D Base



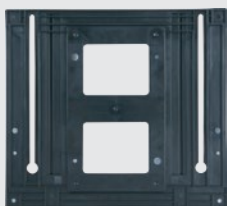
9805301E Base



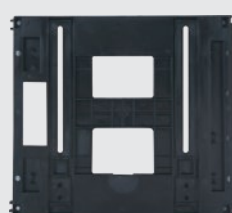
9805301F Base



9805301B2 Base



9805301A Base



9805301B2-2 Base



9805801

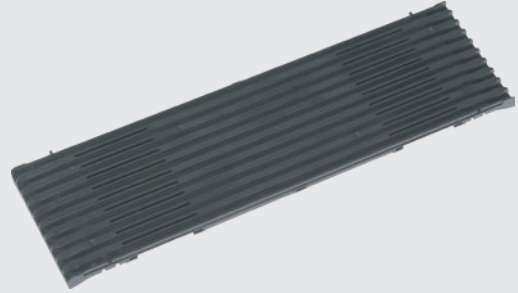


ESD Magazine Rack Panel

9805301A



9805301B1 Panel



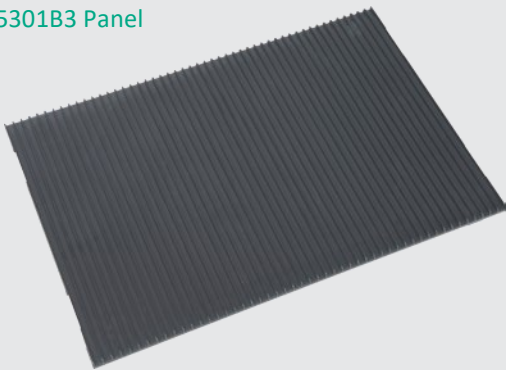
9805301B2-2 Panel



9805301B1-4 Panel



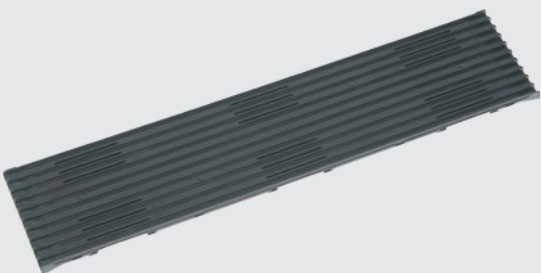
9805301B3 Panel



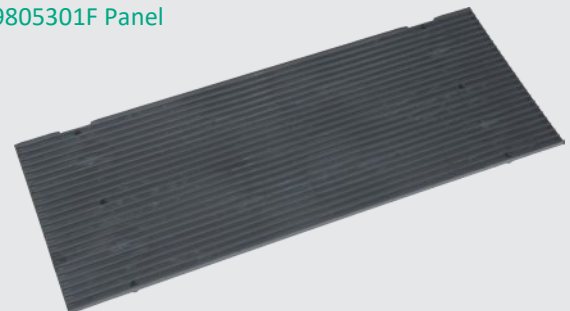
9805301EPanel



9805301C Panel



9805301F Panel



ESD Magazine Rack Optional Component

Dust cover



Metal Stopper



Spring Stopper



Slot Stopper



Block off unused slots to avoid errors



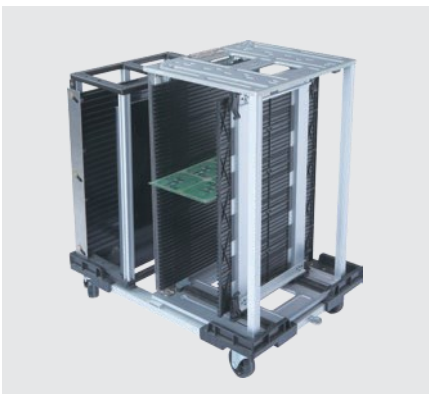
Label Holder



ESD Trolley 9806101



Height:140mm Maximum size: 810x470mm
ESD Magazine Rack or ESD Box Trolley . It could
be custom-made according customer need



ESD Cart



New Type ESD Magazine Rack Show

9805301B5



9805301B5-1



Model	Adjustable Type	External Size(mm)	Depth (mm)	Width (mm)	Pitch (mm)	PCB slots	Adjustable Width(mm)	Ref.Position A	Ref.Position B	Side Board Structure	Base Material	Heatresistant Temp(°C)	Weight (kg)
9805301B5	Handle(Gear track) Adjustment	355×320×563	3.5	5	10	50	30-250	33	33.5	5 Sheet Combined panel	Stainless Steel	100/120/150	6.705
9805301B5-1	Handle(Gear track) Adjustment	355×320×563	3.5	5	10	50	30-250	33	33.5	5 Sheet Combined panel	Aluminum Alloy	100/120/151	7.4

New Type ESD Magazine Rack Operation



1 Place the PCB on the center of the Base



2 Slide the movable side towards the PCB until it cannot slide any further



3 Lock all four handles

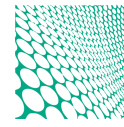


5 Remove the PCB and now it slide smoothly into each rail



4 PCB position completed

Model	Size
9805301B1	355x320x563
9805301B3	355x320x565
9805301C	460x400x563
9805301D	535x460x569
9805301E	535x530x569

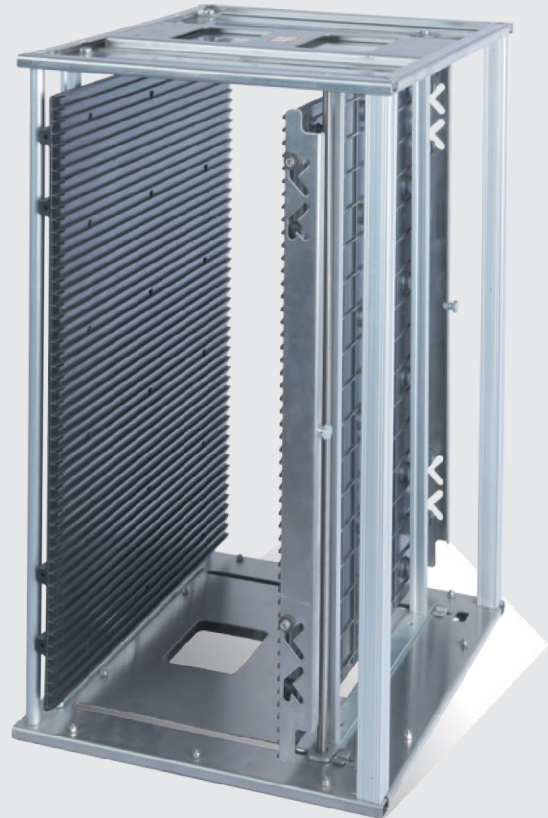


Customized ESD Magazine Rack

9805301N



9805301R



Model	Adjustable Type	External Size(mm)	Depth (mm)	Width (mm)	Pitch (mm)	PCB slots	Adjustable Width(mm)	Ref.Position		Side Board Structure	Base Material	Heat resisitant Temp(°C)	Weight (kg)
								A	B				
9805301N	Screw adjustment	400X320X568	3	7	10	50	50-250/ 40-240	34	34.5	Whole Panel	Plastic	125	7.715
9805301R	Screw adjustment	355X320X565	4	7	10	50	50-240	34	34	Whole Panel	Plastic	125	7.28
9805301R-1	Screw adjustment	355X320X565	4	7	10	50	0-230	33	33.5	Whole Panel	Metal	125	8.43
9805301R-2	Screw adjustment	355X320X568	4	6	20	25	0-230	33	33.5	Whole Panel	Plastic	125	8.6

Customized ESD Magazine Rack

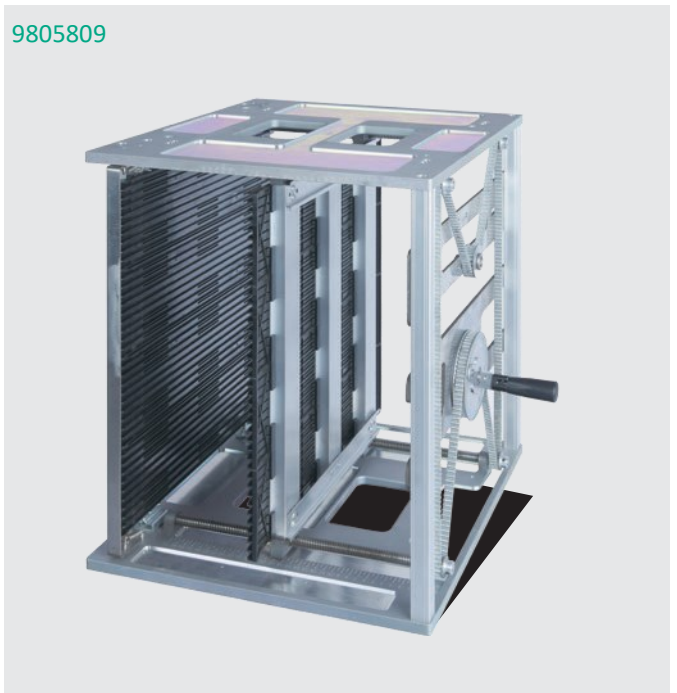
9805301S



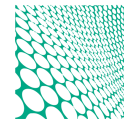
9805801



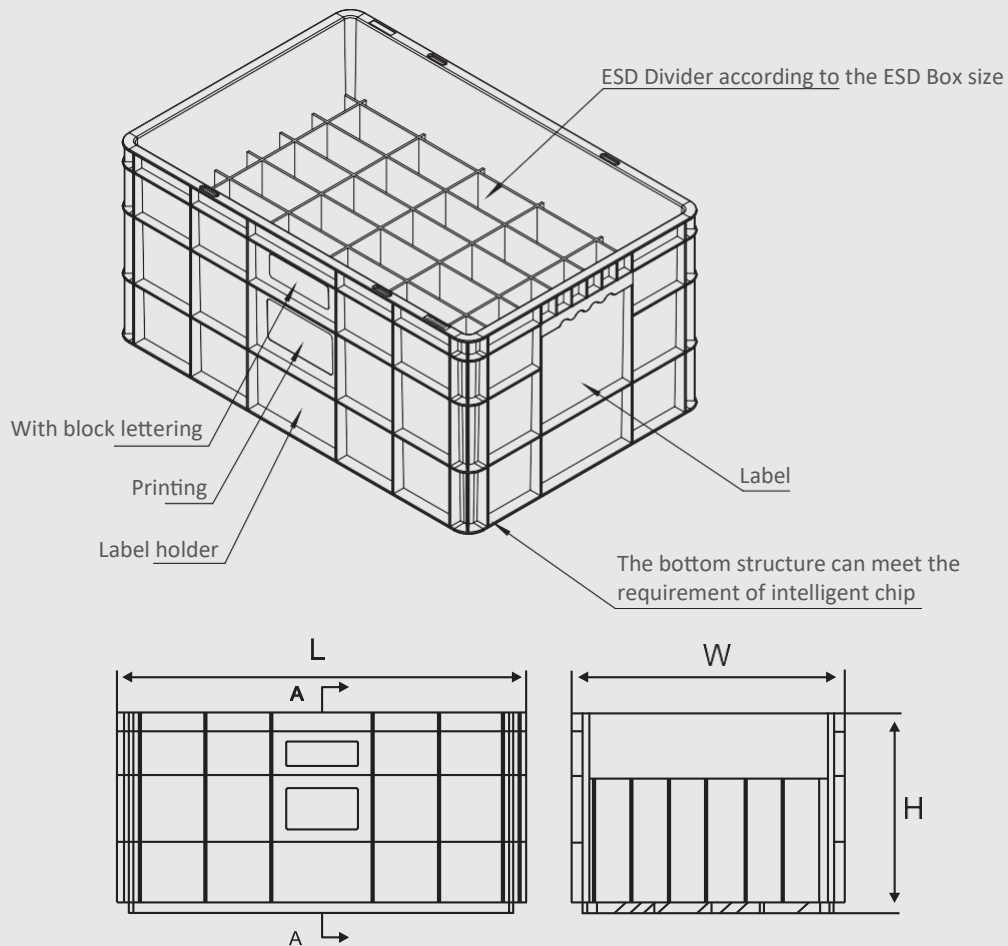
9805809



Model	Adjustable Type	External Size(mm)	Depth (mm)	Width (mm)	Pitch (mm)	PCB slots	Adjustable Width(mm)	Ref.Position		Side Board Structure	Base Material	Heat resistant Temp(°C)	Weight (kg)
								A	B				
9805301S	Chain Adjustment	355x320x560	3	4.5	10	50	50-240	34	34	Whole Panel	Plastic	80	5.63
9805801	N/A	330x193x506	2.8	13	16	25	138	33.5	42	Whole Panel	Plastic	160-220	7.485
9805802	Belt screw Adjustment	430x400x470	3.5	5	10	50	60-300	34	37	4 Sheet Combined panel	Aluminum Alloy	100/120/150	15.855



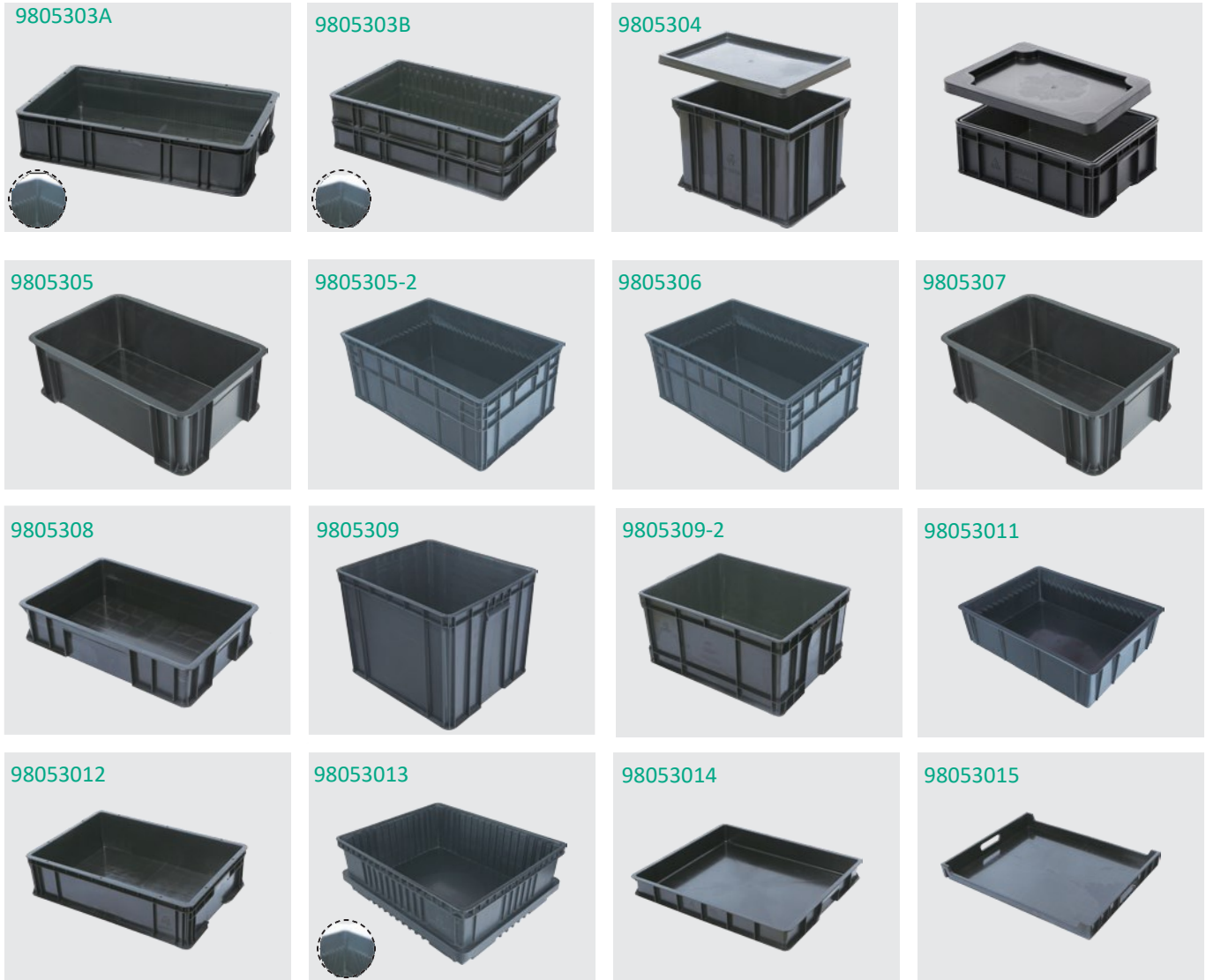
ESD Circulation Box



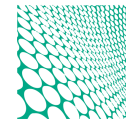
ESD Circulation Box

- 1: E-Flex series ESD Box use independent R&D PP alloy composite materials
- 2: Produced according to industrial standards
- 3: The product is not only tough but also rigid compared to the general logistics container
- 4: The product has a permanent anti-static effect
- 5: Static decay time is less than 1 second

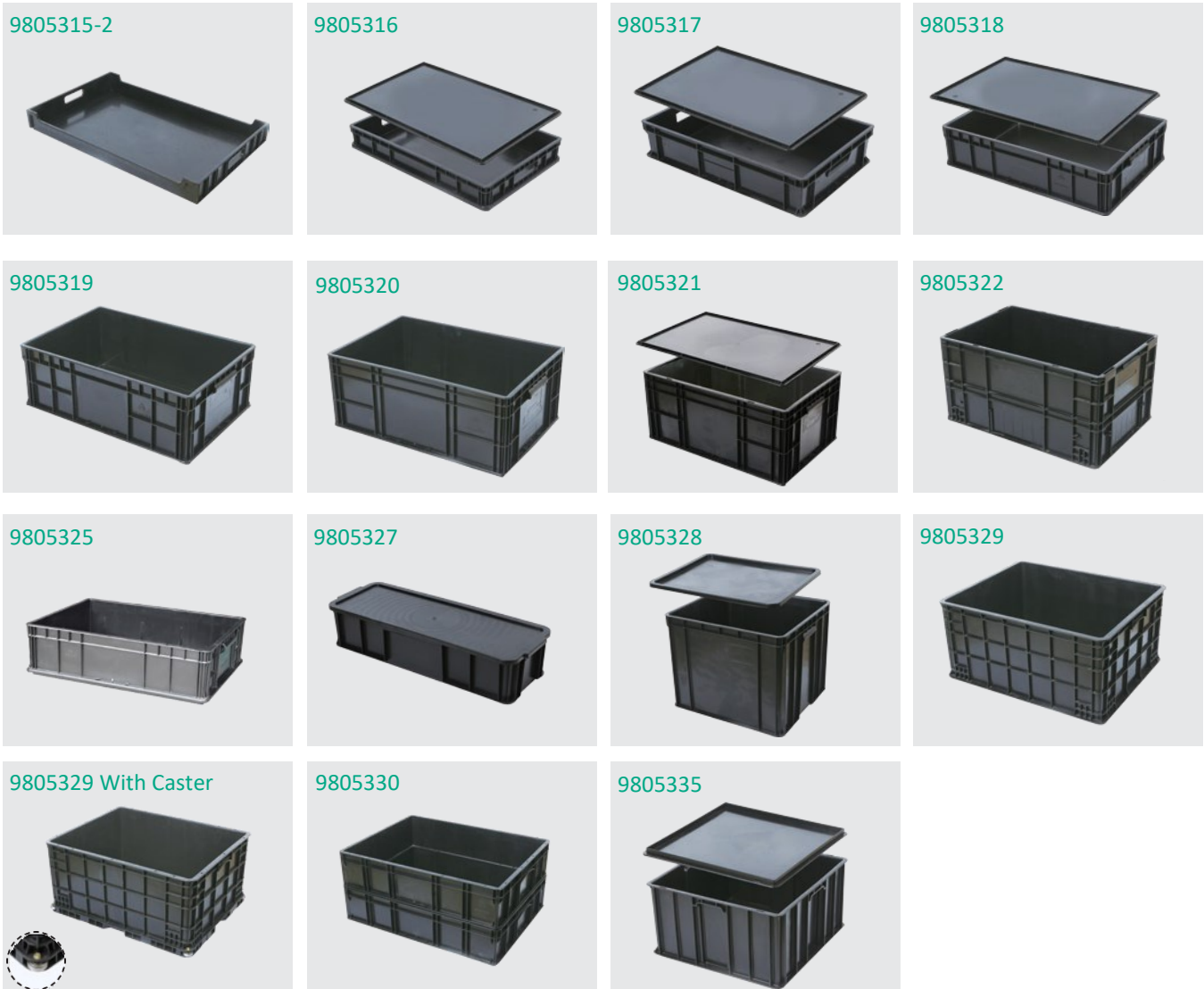
ESD Circulation Box



Model	External Size(mm)			Inner Size(mm)			Side(mm)	Bottom (mm)	Weight (kg)	Optional Component	Remark
	L	M	H	L	M	H					
9805303A	605	365	135	560	325	125	3	3	2	Divider/Lid/label Holder	Inner Wall have slots
9805303B	605	365	95	560	325	83	3	4	2.14	Divider/Lid/label Holder	Inner Wall have slots
9805304	390	285	275	355	250	255	3	4	1.96	Divider/Lid/label Holder	
9805304-2	330	245	120	295	210	108	3.5	4	0.87	Divider/Lid	
9805305	405	305	110	360	270	100	3	4	0.84	Divider	
9805305-2	395	185	155	345	145	150	3	3.5	0.78	Divider/Lid	
9805306	655	445	275	615	405	260	3	4	3.98	Divider/Lid/label Holder	
9805307	590	390	205	530	330	200	3	4	2.48	Divider/Lid	
9805308	605	400	140	560	355	135	3	4	2.16	Divider	
9805309	550	415	305	495	365	295	3	4	2.84	Divider	
9805309-2	550	415	265	495	365	255	3	4	2.6	Divider	
9805311	530	395	145	490	360	135	3.5	4	2.14	Divider	
9805312	645	440	165	595	395	155	3	4	2.4	Divider/Lid/label Holder	
9805313	605	505	205	555	450	200	3	5	3.48	Divider	Inner Wall have slots
9805314	700	610	90	650	560	85	4	4	2.87	Divider	
9805315	690	550	75	650	515	70	2	3	2.11	Divider	



ESD Circulation Box



Model	External Size(mm)			Inner Size(mm)			Side(mm)	Bottom (mm)	Weight (kg)		Remark
	L	M	H	L	M	H					
9805315-2	845	525	95	810	495	90	2.5	3	2.29	Divider	
9805316	600	400	90	560	360	85	3	5	1.76	Divider/Lid	
9805317	600	400	130	560	360	127	3	5	1.91	Divider/Lid/label Holder	
9805318	600	400	150	560	360	145	3	5	2.29	Divider/Lid/label Holder	
9805319	600	400	220	560	360	215	3	5	3.1	Divider/Lid/label Holder	
9805320	600	400	255	560	360	250	3	5	3.26	Divider/Lid/label Holder	
9805321	600	400	280	560	360	275	3	5	3.01	Divider/Lid/label Holder	
9805322	600	400	320	560	360	305	3	5	3.76	Divider/Lid	
9805325	590	420	165	556	390	160	3	5	2.32	Divider/Lid/label Holder	
9805327	720	263	158	685	220	150	3	5	1.56	Divider/Lid	
9805328	560	460	410	480	420	400	3	4	4.36	Divider/Lid	
9805329	650	520	305	605	475	295	3.5	4	5.05	Divider/Highten Layer	
9805329 With caster	650	520	300	600	470	270	3.5	4	7.02	Divider/Highten Layer	
9805330	710	540	160	670	500	150	3	3.5	3.22	Divider	
9805335	400	400	220	370	370	200	3	5	2.22	Divider/Lid	

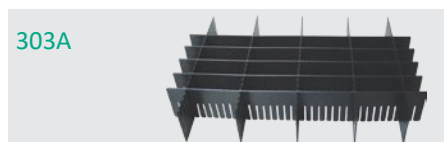
ESD Box Optional Component



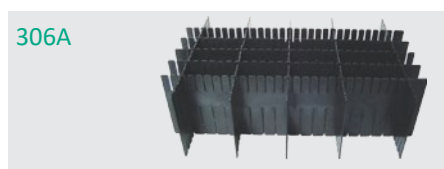
Model	External Size(mm)			Inner Size(mm)			Side(mm)	Bottom (mm)	Weight (kg)	Optional Component	Remark
	L	M	H	L	M	H					
9805303C Height Layer	605	365	85	560	325	85	3		1.04	Divider	Inner Wall have slots, match 9805303A/9805303B
9805312 Heighten Layer	645	440	165	595	395	165	3		1.49	Divider/Lid	match 9805312
9805325 Heighten Layer	590	420	160	556	390	160	3		1.46	Divider/Lid/label Holder	Match 9805325



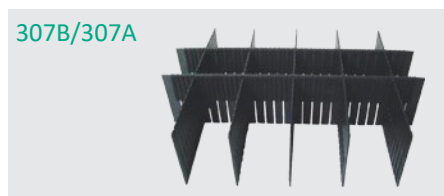
Model	Name	Size(mm)	Depth (mm)	Width (mm)	Pitch (mm)	Weight (kg)
CGB-306B	306 Double-sided Slotted long partition	610x190x2	5	3.5	10	0.73
CGB-306C	306 Single-sided Slotted long partition	610x190x2	5	3.5	10	1.27
DGB-306B	306 Double-sided Slotted short partition	400x190x2	5	3.5	10	0.5
DGB-306C	306 Single-sided Slotted short partition	400x190x2	5	3.5	10	0.805



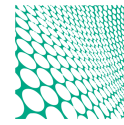
Model	Name	Size(mm)	Weight (kg)	Remarks
CGB-303A	303 Long divider	560x80x2.5	0.14	Any specification can be customized



Model	Name	Size(mm)	Weight (kg)	Remarks
CGB-306A	306A Long divider	610x180x2	0.265	Any specification can be customized
CGB-306A	306A short divider	405x180x2	0.205	Any specification can be customized



Model	Name	Size(mm)	Weight (kg)	Remarks
CGB-307B	307B Long divider	560x100x3	0.21	Any specification can be customized
CGB-307B	307B short divider	325x100x3	0.1	
DGB-307A	307A Long divider	555x135x3	0.325	
DGB-307A	307A short divider	390x135x3	0.18	



ESD New Material

Our permanent antistatic color material has the following advantages:

1. High clean, non-polluting, anti-static natural material without carbon black added, will not pollute the product, suitable for products with high cleanliness requirements turnover.
2. Diversified colors, can be applied to different processes different products Division and different customers, etc.
3. With permanent anti - static function, safe and reliable.

We promise that our ESD Colorful Box will not fail due to scratching, breaking, washing !



ESD Frame and Pallet

The ESD Frame is a unitized packaging device, which is widely used and suitable for steam vehicle industry, medical industry, hydraulic bearings, valve body pumping, etc.

Main advantages:

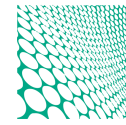
1. Waterproof, anti-ash, easy to operate, good protection for products, self-weight is light, suitable for flat trucks, container trucks, flying wing vehicles, etc.
2. The loading rate is high, the packaging cost is reduced by more than 40%, and the nested empty box return and storage can save more than 80% of space, which can greatly save the return charge by more than 60%
3. Can be forklift work, easy to assemble and disassemble, save labor costs and long service life



ESD Tray



Model	External Size(mm)			Inner Size(mm)			Side(mm)	Bottom (mm)	Weight (kg)	Remark
	L	M	H	L	M	H				
9805108	225	165	37	215	155	32	2	2	0.18	Long side has slot; Short side not
9805109	320	232	42	305	218	37	3	2.5	0.39	
9805109-2	320	235	58	305	220	52	3	3	0.47	
9805110	285	195	26	275	185	23	3	3	0.26	
9805111	375	310	28	360	293	22	3.5	3	0.51	
9805112	457	312	39	417	292	30	2	3	0.73	Detachable partition, total 70 grid
9805113	450	295	70	435	280	62	2.5	3	1.08	
9805113-2	450	295	41	430	278	35	3	2.5	0.72	
9805114	375	275	41	360	260	35	2.5	2	0.51	
9805115	530	368	42	510	350	34	2.5	3	1.22	Long side has slot; Short side not
9805115-2	530	370	56	510	350	50	3	2	1.07	Concave height 35mm
9805116	497	398	41	462	363	34	3	3	0.91	
9805117	592	545	37	578	535	31	4.5	2.5	1.92	
9805117-2	550	550	33	523	523	30	3	3	1.45	
9805118	495	495	32	470	470	30	3	3	1.6	Temperature: 150°C, into oven



ESD Tray

9805119



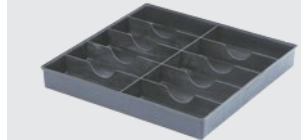
9805120



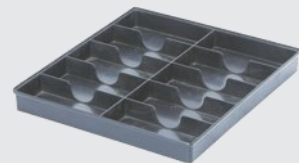
9805120-2



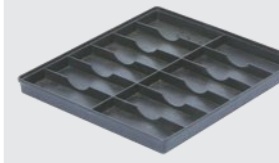
9805121



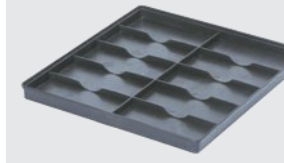
9805122



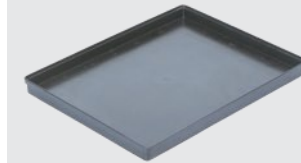
9805123



9805124



9805125



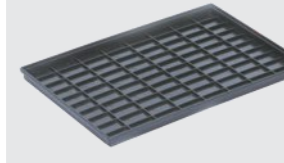
9805126



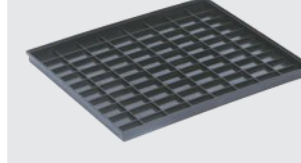
9805127



9805128



9805129



9805130



9805134

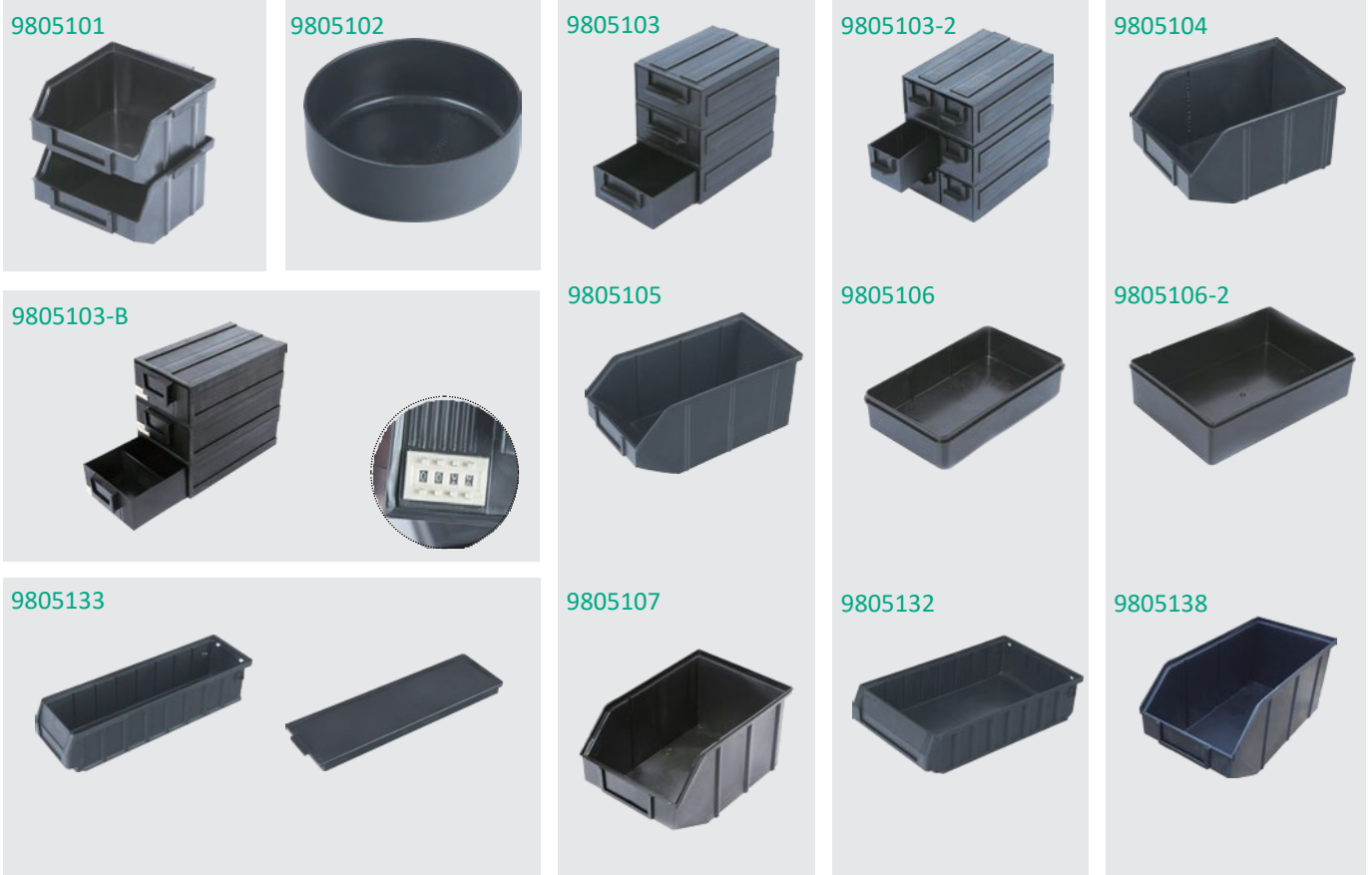


98051237



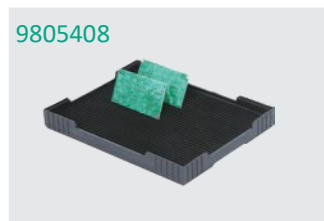
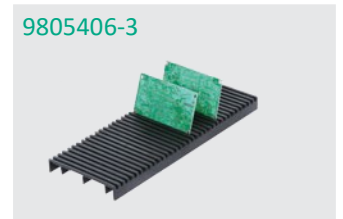
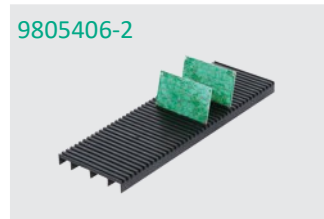
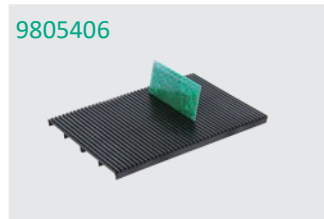
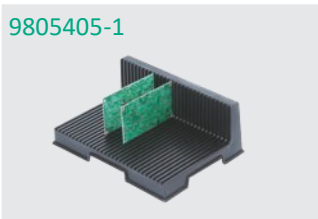
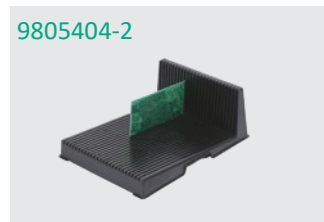
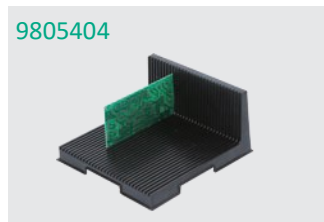
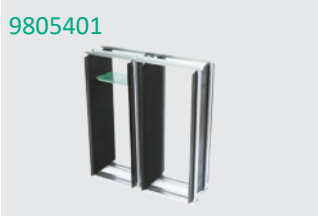
Model	External Size(mm)			Inner Size(mm)			Side(mm)	Bottom (mm)	Weight (kg)	Remark
	L	M	H	L	M	H				
9805119	550	453	47	513	413	45	3	3	1.58	
9805120	340	123	54	295	112	48	3.5	2.5	0.34	With Lid
9805120-2	340	123	54	145	112	48	3.5	2.5	0.37	With Lid, 2 grid
9805121	350	340	44	168	63	36	3	3	0.8	10 Grids; Size: 168x63x28
9805122	315	290	34	138	59	27	2.5	3	0.5	10 Grids; Size: 140x60x23
9805123	290	260	24	123	45	15	2.5	3	0.37	12 Grids; Size: 125x48x15
9805124	315	290	23	138	58	12	2.5	3	0.4	10 Grids; Size:130x53x15
9805125	356	286	26	345	274	22	3	3	0.48	
9805126	495	380	35	425	315	30	2.5	3	0.68	
9805127	400	325	29	64	64	20	3	4	0.74	20 Grids; Size:65x65x25
9805128	315	202	16	36	17	4	3	2.5	0.29	80 Grids; Size:65x65x25
9805129	356	282	20	40	24	6	3	2.5	0.5	80 Grids; Size:65x65x25
9805130	315	175	35				3	3	0.21	Hole Diameter: 6.5mm
9805134	555	357	52	540	340	47	3	4	1.15	
9805137	350	245	88	320	215	80	2	2.5	0.63	

ESD Component Box



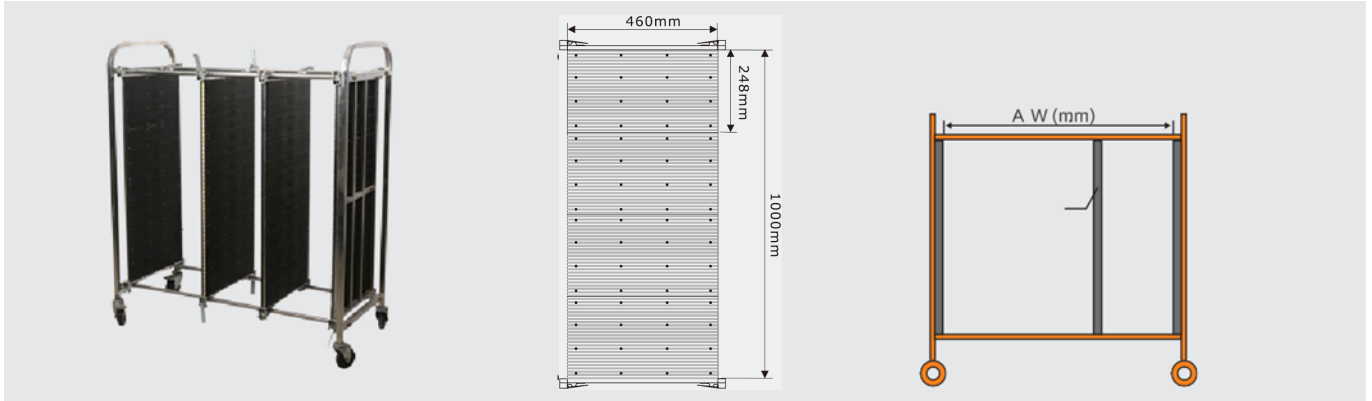
Model	External Size(mm)			Inner Size(mm)			Side(mm)	Bottom (mm)	Weight (kg)	Remark	
	L	M	H	L	M	H					
9805101	130	125	65	110	108	57	2	2	0.1	Hanging-style Tail suspension thickness: 3mm; Oblique thickness: 2.5mm	
9805102	Φ120*45			Φ116*42.5							
9805103	Outer edge	128	95	48	127	88	41	2	2.5	0.17	Drawer Type
	Internal	136	87	40	122	82	38				
9805103-2	Outer edge	128	95	48	127	88	41	2	2.5	0.21	Drawer Type
	Internal	136	43	40	122	38	37				
9805103-B	Outer edge	240	141	72	238	133	63	2.5	2.5	0.63	Digital Drawer
	Internal	250	132	61	232	125	58				
9805104	160	98	70	148	85	65	2	2.5	0.12	Hanging-style Tail suspension thickness: 3.5mm; Oblique thickness: 3mm	
9805105	200	130	90	180	110	80	2	2.5	0.23	Hanging-style Tail suspension thickness: 3mm; Oblique thickness: 2.5mm	
9805106	203	124	50	193	113	42	2	2.5	0.25		
9805106-2	230	160	64	220	150	55	2	3	0.35		
9805107	235	157	121	215	138	112	2	2.5	0.39	Hanging-style Tail suspension thickness: 3mm; Oblique thickness: 1mm; Top thickness: 2.5mm	
9805132	395	230	91	355	210	80	2.5	3	0.8	With lid/divider, 8 grids	
				210	40	80					
9805133	395	115	91	360	93	80	2.5	3	0.46	With lid/divider, 9 grids	
				93	40	80					
9805138	300	155	137	284	140	127	2.5	3	0.54	Hanging-style Tail suspension thickness: 3mm; Oblique thickness: 1mm; Top thickness: 2.5mm	

ESD Circulation Rack



Model	External Size(mm)			Depth (mm)	Width (mm)	Pitch (mm)	PCB Slots	Weight (kg)	Remark
	L	M	H						
9805401	470	190	545	3	5	10	49	4.24	Adjustable: 2*(10-190mm)
9805402	(50-400)	185	350	5	3.6	10	32	1.72	Any size could be customized
9805402A				5	3.6	10	32	3.36	
9805403	436	160	32	8	3	16	25	0.39	
9805403-2	475	175	47	1 3 2 7.5	2 3	15 15	24 25	0.505	
9805404	270	255	130	4	2.8	8	30	0.42	
9805404-2	355	270	128	5	2.5	9.5	25	0.64	
9805405	205	265	95	5	3	9	25	0.47	
9805405-1	190	250	95	3	3	8	30	0.41	
9805406	410	280	21	5	2.8	10	42	0.72	
9805406-2	410	138	22	5	3	10	42	0.44	
9805406-3	340	130	22	5	3	10	34	0.33	
9805407	415	285	200	5	2.6	10	38	1.74	
9805408	320	248	37	8.5	5.5	6.5	35	0.62	
9805409(4 slots)	100	15	14	10	2	18	4	0.006	
9805409(9 slots)	100	15	14	10	1.5	10	9	0.008	

ESD Trolley



Model	Whole Trolley Specification						Side Board Specification						
	External Size (mm)	Adjustable Width(mm)	Side Plate Size (mm)	PCB Slot	Max Bearing	Flapper Size	Width	Depth	Pitch	Slot	Side Board Structure	Electrostatic index	Self Weight
9805201-2A/C	950×550×1380	850	1000×460×30	300	100kg	248×460	4.5	4.5	10	100	4 Sheet Combined Panel	1×10 ⁴ Ω~1×10 ⁹ Ω	36kg
9805201-2B/C	1200×550×1380	1050	1000×460×30	300	100kg	248×460	4.5	4.5	10	100	4 Sheet Combined Panel	1×10 ⁴ Ω~1×10 ⁹ Ω	38kg

Remarks:

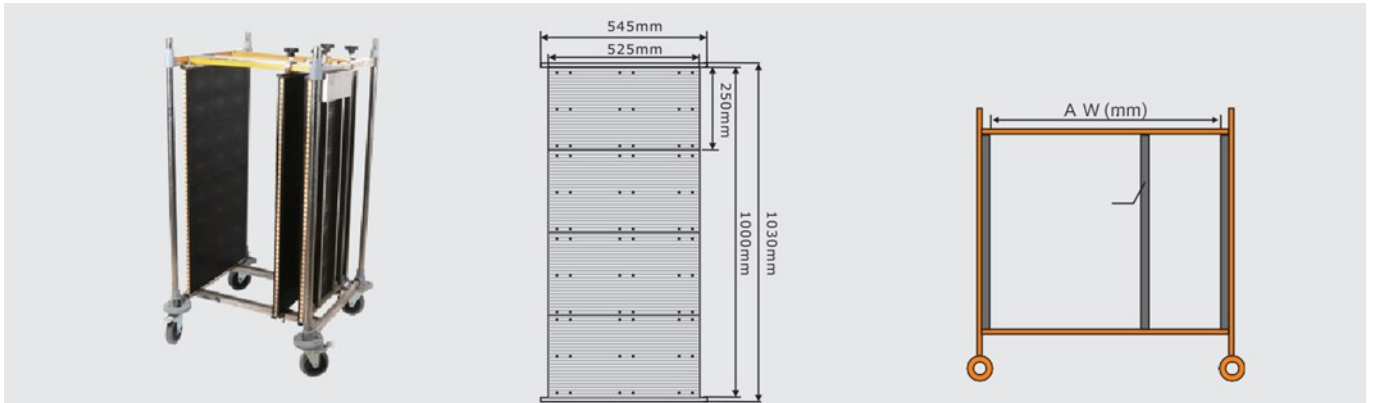
- 1 One standard trolley with 2 pc single-side flashboard, 2 pc double-side flashboard
- 2 It can be added extra double-sideboard flashboard as per actual need
- 3 Side Plate: Sideboard is formed by 4 pcs panels, fixed by screw on frame
- 4 One standard trolley 's Each column insert 100 pcs PCB, Total store 300 pcs PCB



Whole Trolley Specification					
Model	External Size(mm)	PCB Slot	Max Bearing	Electrostatic index	Self Weight
9805206	850x600x1400	With 20 units 9805407	100kg	1x10 ⁴ Ω~1x10 ⁹ Ω	12.54kg

Panel Specification					
Model	Flapper Size	Width	Depth	Pitch	Slot
9805407	415x285x200	2.8	5	10	38

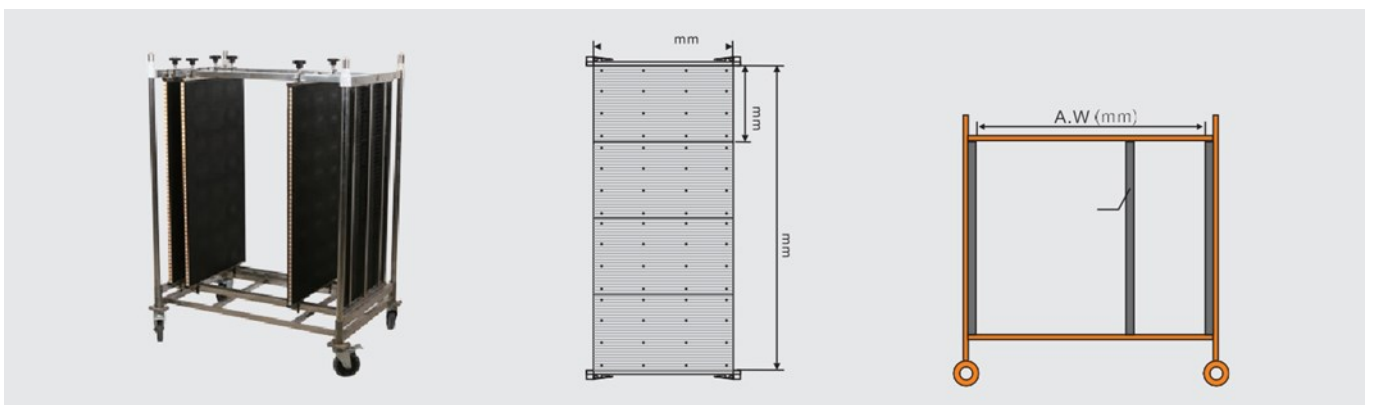
ESD Trolley



Model	Whole Trolley Specification						Side Board Specification						
	External Size(mm)	Adjustable width(mm)	Side Plate Size(mm)	PCB Slot	Max Bearing	Flapper Size	Width	Depth	Pitch	Slot	Side Board Structure	Electrostatic index	Self Weight
9805208	745x715x1350	485	1028x545x30	200	150kg	525x250	7	4	10	100	4 sheet combined Panel	1x10 ⁴ Ω~ 1x10 ⁹ Ω	47.5kg

Remarks:

- 1 One standard trolley with 2 pc single-side flashboard, 1 pc double-side flashboard
- 2 Side Plate: Sideboard is formed by 4 pcs panels, fixed by screw on frame
- 3 One standard trolley 's Each column insert 100 pcs PCB, Total store 200 pcs PCB



Model	Whole Trolley Specification						Side Board Specification						
	External Size(mm)	Adjustable width(mm)	Side Plate Size(mm)	PCB Slot	Max Bearing	Flapper Size	Width	Depth	Pitch	Slot	Side Board Structure	Electrostatic index	Self Weight
9805208-2	1100x715x1400	825	1028x545x30	300	150kg	525x250	7	4	10	100	4 sheet combined Panel	1x10 ⁴ Ω~ 1x10 ⁹ Ω	72.8kg

Remarks:

- 1 One standard trolley with 2 pc single-side flashboard, 1 pc double-side flashboard. The side panel is fixed with a screw knob
- 2 Side Plate: Sideboard is formed by 4 pcs panels, fixed by screw on frame
- 3 One standard trolley 's Each column insert 100 pcs PCB, Total store 200 pcs PCB