

Smart Hybrid Mounter

# SM485P

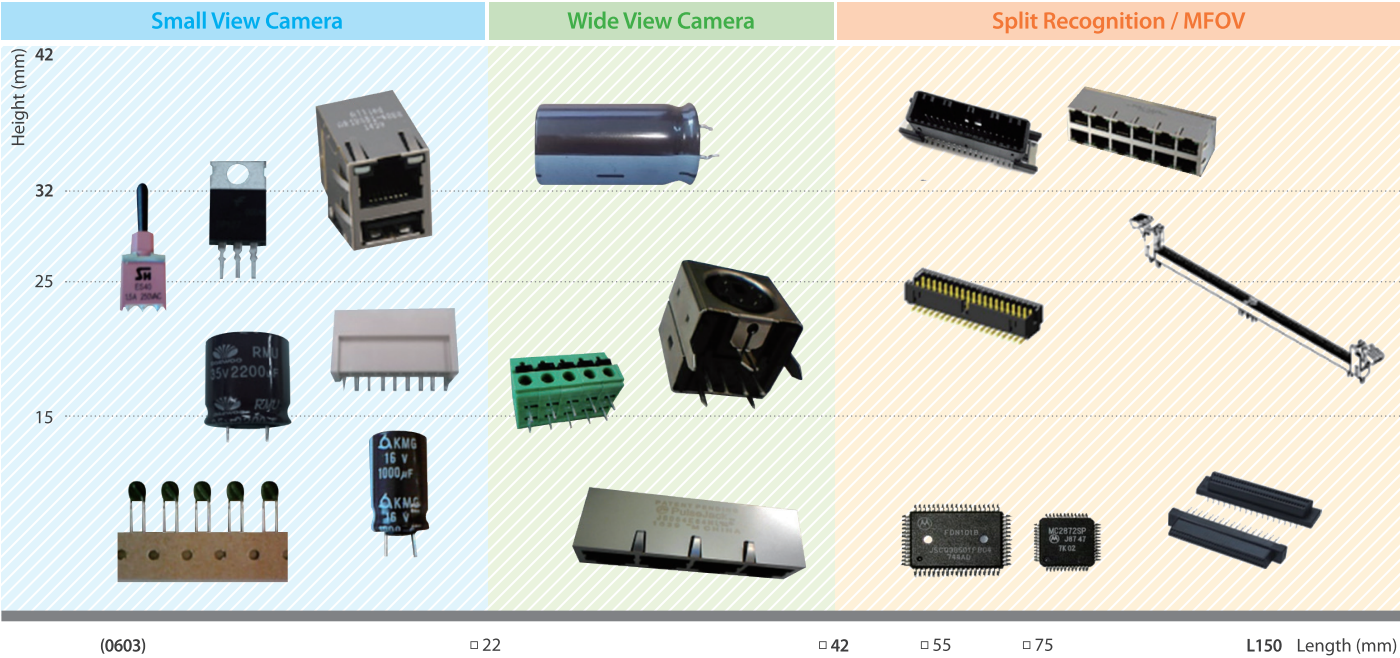
Experience Your **SMART FACTORY**



Specifications		
Alignment		4 Small Fix Camera + 1 Wide Fix Camera
The number of spindles		4 spindles x 1 Gantry
Placement Speed		12,000 CPH (Optimum)
Placement Accuracy	Chip	±50 μm @ Cpk≥ 1.0
	IC	±30 μm @ Cpk≥ 1.0
Component Range	Small Fix Camera	0603 ~ □ 22 mm
	Wide Fix Camera	~ □ 55 mm, L150 mm
	Max. Height	32 mm (Standard), 42 mm (Special Order *)
PCB Size (mm)	Min.	L50 x W40
	Max.	~ L460 x W400 (Standard) ~ L460 x W280 (Option), ~ L460 x W340 (Option), ~ L610 x W460 (Option)
PCB Thickness (mm)		0.38 ~ 4.2
Feeder Capacity (8mm Standard)		120 ea/112 ea (Docking Cart)
Utility	Power	3 phase AC 200±18V / 208±19V / 220±20V / 240±22V / 380±25V / 415±28V (50/60Hz) Max. 3.5 kVA
	Air	5.0 ~ 7.0 kgf/cm <sup>2</sup> 50 Nℓ/min (Vacuum Pump)
Weight		Approx. 1,600 kg
External Dimension (mm)		L1,650 x D1,679 x H1,993

\* Special order, professional advice and recommendations are required.

## Component Range & Feeder Solutions



• **USA** 6000 Phyllis Dr. Cypress, CA 90630, USA Tel : +1-714-373-4200  
• **Europe** Tel : +82-70-7147-6322, 6311 Fax : +82-31-8018-3721  
• **Asia** Tel : + 8 2 - 7 0 - 7 1 4 7 - 6 3 2 0 , 6 3 2 3 Fax : + 8 2 - 3 1 - 8 0 1 8 - 3 7 2 1  
• **Head Office** 6, Pangyo-ro 319beon-gil, Bundang-gu, Seongnam-si, Gyeonggi-do 13488, Korea

• The dimensions, product specifications and values in this catalog are actual values measured under conditions designated by our company.  
• The above items may differ depending on actual operating conditions. For the details related to options, please contact the person responsible for sales.

Doc. No: SMT-SM485P-CAT-EN-001 © 2019 Hanwha Precision Machinery Co., Ltd. All rights reserved.



# Smart Hybrid Mounter

# SM485P

The **SM485P** mounter is a multi-functional hybrid mounter that can quickly and reliably place odd-type components and SMD components.

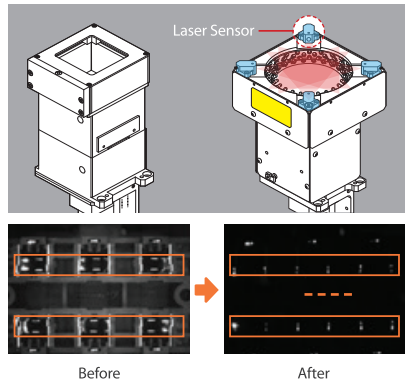




Reliable Insertion & Verification Solutions

**LASER Light**

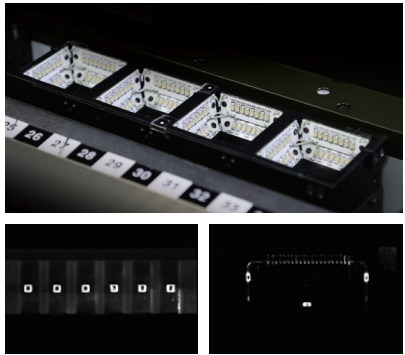
As 4-directional laser lighting for Wide Cameras, it reinforces the recognition of an individual lead pin of an insert component.



**Laser Light For Small Camera (Option)**

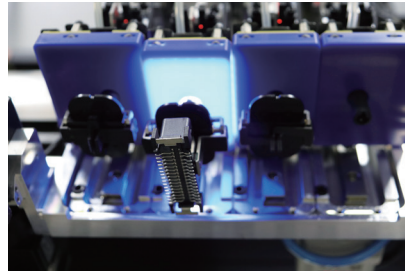
As laser lighting for Small Cameras, it can recognize even lead pins of a small and medium sized insert component

- Possible to recognize, inspect, and place an individual pin up to a Max. of □22mm simultaneously.



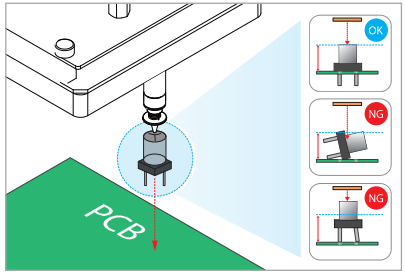
**Back Light**

Recognizes a semi-transparent and irregularly reflecting component correctly (Ex.: Shield Can, Lens, Tape, etc.)



**Height Sensor (Option)**

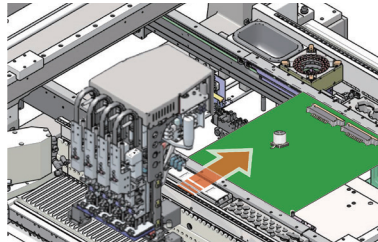
After placing a component, measures its height and detects non-insertion / lift-off / defective insertion of the component in real time.



High Productivity & Special Process Solutions

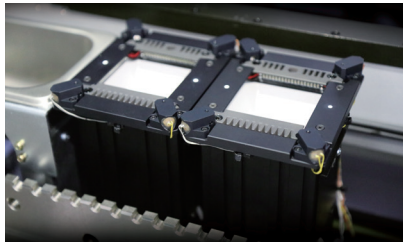
**4 Precision Spindle Head (P4 Head)**

Equipped with 4 cameras at the front, it can recognize and place 4 small and medium sized components simultaneously.



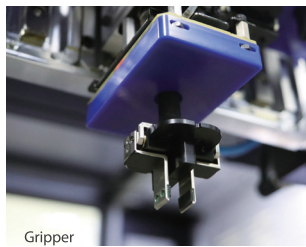
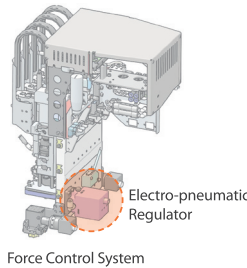
**Dual Fix Camera (Option)**

When equipped with a Dual Fix Camera at the rear, it can recognize and place 2 medium and large components simultaneously.



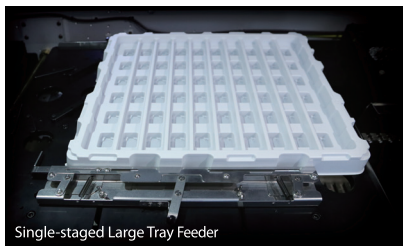
**Special Process / Solution Applicable to Odd-shaped Component**

- Insertion / Placement Force setup (Force Control): 0.5 ~ 50N
- Large / Long Component MFOV (Split Recognition): 2/3/4 split
- Gripper supported for insert component: ~ Max. H42mm



**Large Component Supply Device**

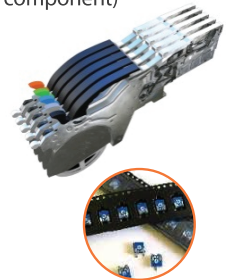
Possible to supply medium and large components (Tray Size: 420 x 350mm)



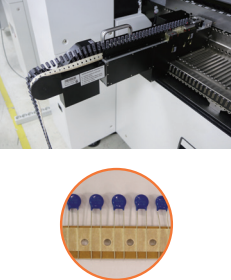
Various Feeders

**Tape Reel Feeder**

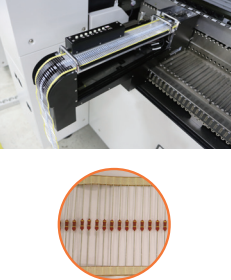
**Tape Feeder**  
(SMD, Odd-shaped component)



**Radial Feeder**  
(Insert Component)



**Axial Feeder**  
(Insert Component)

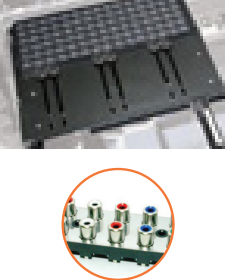


**Tray Feeder**

**Multi-staged Tray Feeder**



**Single-staged Tray Feeder**

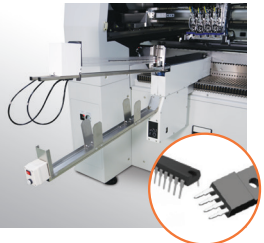


**Stick Feeder**

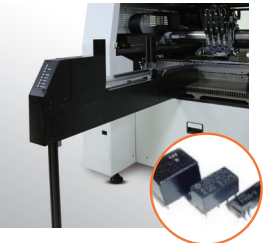
**Multi Stick Feeder**  
(Vibration)



**Stack Stick Feeder**  
(Vibration)



**Stack Stick Feeder**  
(Pusher + Air)

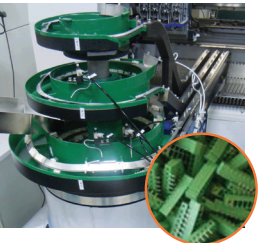


**Bulk Feeder (Bowl Feeder)**

**2-staged Bowl Feeder**



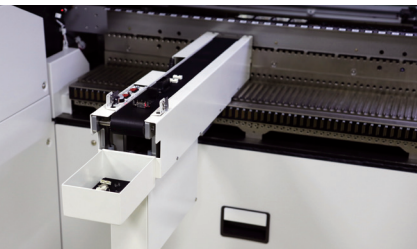
**3-staged Bowl Feeder**



Accessories

**Reject Conveyor**

Refers to a collecting device that discharges a large component out of the machine in time.



**Removable Dump Box**

Removable dump box for a feeder base



**Offline Setup Unit**

Refers to a feeder slot type setup machine that supplies power and pneumatic pressure to a manual component insertion machine.

- Applicable Feeder**
- Stack Stick Feeder (Vib)
  - Radial/Axial Feeder



Maximum number of mountable feeders

Description	Tape Reel Feeder		Stick Feeder			Bowl Feeder	Tray Feeder		
	Tape (8mm)	Radial/Axial	Multi Stick (Vibration)	Stack Stick (Vibration)	Stack Stick (None Vibration)	Single/ 2-Staged/ 3-Staged	Multi	Side	Single
FRONT	60	10	6	8	7	2	-	-	2
REAR	60	10	6	8	7	2	1	1	2