

ii-RC



Powerful Programming and Operating
System for Pick and Place machines

ii-RC powered by Siemens *Process Preparation*

Programming Station

1. Package Management

- ▶ **Import Export Packages** – Streamline operations by transferring packages between sites and automatically importing pre-defined packages.
- ▶ **Package Creation Assistance** – A built-in wizard guides users through parameter selection and component categorization, simplifying package creation.
- ▶ **Offline package teaching with Vision Bench** – Create new package vision files without disrupting production lines. The embedded camera replicates the exact machine vision system using front and side illumination devices, ensuring that components created offline are accurately analyzed during production.

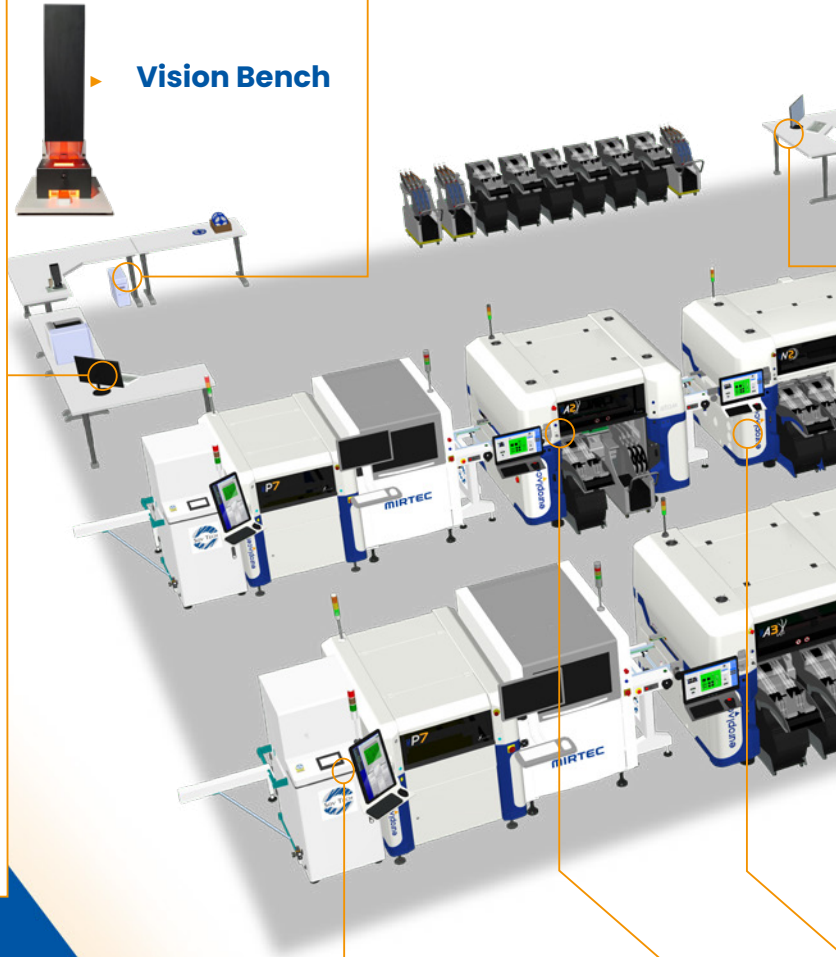
2. Optimization

- ▶ **Automated Optimization** – The software calculates the optimal balance between line speed, placement rates, and loading time.
- ▶ **Multi-Job Optimizer** – Processes programs based on board quantities and production sequence, minimizing unnecessary feeder movements between programs.

Server

- ▶ The best way to secure and centralize all your data, including programs, package libraries, and electrical test libraries. With the auto backup option, your data is stored more reliably.

Vision Bench



A Powerful Programming and Operating System

As an integral part of the Europlacer software ecosystem, ii-RC supports you at every stage of the SMT assembly process. This application is not just a system for interacting with your placement machines – it's the heart of your operation.

ii-RC powers the efficient preparation of feeders, manages component stock, and generates optimized placement programs.

Every workstation and machine running ii-RC software communicates seamlessly, creating an interconnected environment that streamlines procedures while eliminating unnecessary data.

Thanks to our policy of backward compatibility, you can take advantage of the latest ii-RC software versions – even on older Europlacer machines.

▶ **Monitor your
production with
ii-Tab**
(see ii-Tab
brochure)





- ▶ **Create your picklist, book the reels and prepare your production with ii-Tab** (see ii-Tab brochure)

Preparation Station

- ▶ Handles communication with all devices and manages storage towers and racks by sending XML requests.
- ▶ **White Box** – Connect up to four ii-Carts for offline production preparation and to maximize your machine's capacity. You can check if feeders have been inserted correctly according to the charging plan.
- ▶ **License Management** – All licenses are centralized here:
 - Wi-Fi License
 - Stock Management
 - Traceability
 - Set-up Help
 - Production/Preparation Data Access
- ▶ **Stock Overview** – Get a real-time view of stock directly from machines, ii-Carts, and storage systems.

Machine

1. Component Management

- ▶ In case of a last-minute change, you can create new package vision files directly on the machine.

2. NPI (New Product Introduction)

- ▶ Use the NPI wizard to efficiently manage new product introductions and ensure a successful first board every time. It guides you through defining fiducials, controlling the board, checking nozzles, and setting up and managing feeders.

3. Feeder Management

- ▶ Prepare your inventory entirely offline and develop custom configurations to meet specific needs.
- ▶ **Import/Export trays** – Import a mechanical description file of your tray layout directly to your machine. Perform the programming once and reuse it automatically.

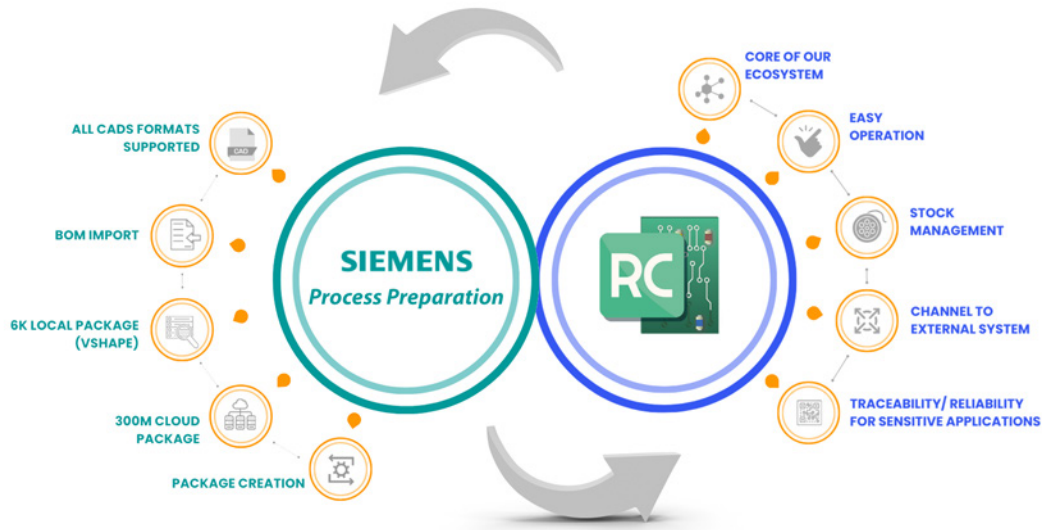
4. Pre-Picking Check

- ▶ Designed as a counterpart to the electrical tester, this feature helps confirm the orientation and correct loading of components by comparing the top view of the component with a model.
- ▶ Automatically control the orientation of one or all components by scanning the matrix tray. This eliminates handling errors, enhances quality control, and speeds up first board validation. Test all components or only the first N as needed.

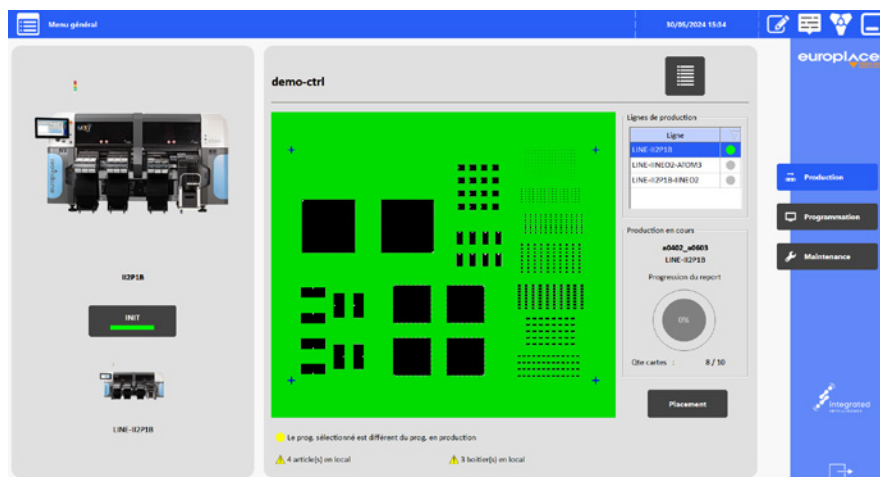
ii-RC Programming and Preparation Station – Offline

With ii-RC, you can manage different Gerber layers while defining your programs. This functionality frees up valuable machine resources, allowing you to prepare future production entirely offline. You can easily modify or complete your program by adding or duplicating components.

The libraries enable you to manage various components, packages, and electrical tests. You can also create electrical test procedures for your components. The definition of stringent electrical test procedures is usually reserved for expert teams.



As part of RC 5.17, the *Process Preparation* module offers an advanced software solution for creating placement programs. By integrating various CAD files and expanding the component library, *Process Preparation* optimizes the design process, reducing manual work and accelerating time-to-market. Its intelligent algorithms provide comprehensive component information and rigorous validation of BOMs and AVLs, ensuring precise and error-free production.



ii-RC Machine interface – Online

The ii-RC software, localized on the Pick and Place machine, allows you to produce a program that has been previously modified, optimized, and prepared with all required components. You can also manage feeders and configure the component auto-digit for efficient production.

- ▶ **Whether you use it at a preparation station, programming station, or directly on the machine, you'll find the same graphical user interface.**

4.0 Communication Solutions



Work Order Management

A dedicated communication channel enables seamless integration with third-party software (ERP, MES, etc.). This allows you to import job orders directly from your business management system.



Stock Management Option

Europlacer has long provided the ability to exchange component stock data with external systems, such as your ERP, storage tower, or MES. This data is stored in our database.

Each system has specific requirements, you shouldn't have to choose just one for data communication. The Stock Management option allows you to integrate with multiple entities simultaneously and manage each integration individually. A dedicated communication channel ensures seamless data exchange across all your tools. Additionally, stock can be managed via SQL queries.



CFX

The IPC-CFX standard ensures fast and transparent integration of production systems and equipment. Europlacer's protocols are now fully compatible with this industry 4.0-oriented IPC standard. Our machines also export production data in real time.

ii-RC powered by Siemens *Process Preparation*

ii-RC key functionalities:

- ▶ Machine advanced UI
- ▶ Offline program preparation
- ▶ Multi-programming: Ability to optimize multiple programs simultaneously
- ▶ Electrical test library creation
- ▶ Articles creation
- ▶ Job order creation
- ▶ Remote Camera (Vision Bench)

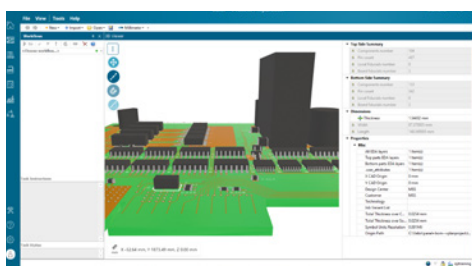
RC5.17 updates:

- ▶ **MariaDB Database Management**
 - **Preparation Data License** - Allows customers to access preparation data (packages, items, etc.) via SQL requests.
 - **Production Data License** - Allows customers to access production data (components placed, times, etc.) via SQL requests.
- ▶ **ii-Tab 3.0 Enabler** - Enables reels booking for production.
- ▶ **Pick List Management** - Send pick lists for full or partial productions to storage towers.
- ▶ **Enhanced MSL Management**
- ▶ **PCB and Gerber Import in Programming**
 - Includes scaling and mirroring.
 - Supports BMP, GIF, JPEG, PNG, TIFF, Exif, WMF and EMF formats.
- ▶ **CFX 1.7 Compatibility**
- ▶ **Improved Article/Package Search function**

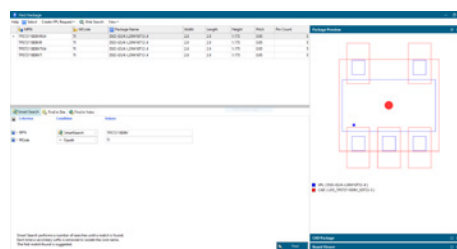
Process Preparation main features:

- ▶ **CAD & BOM Conversion** - Converts CAD design data and BOM data into pick and place programs.
- ▶ **Process Preparation Design File Support** - Compatible with all major CAD types, Gerber, ASCII, and ODB++
- ▶ **Workflow Optimization:**
 - Simplifies the learning curve.
 - Guides the user through the import process.
 - Ensure all required data is entered.
 - Allows users to resume work seamlessly.
 - Easily configurable by the user.
- ▶ **3D Board Viewer**
- ▶ **Vshape:**
 - Access a database of 6,000 package types.
 - Automatically create new programs based on CAD footprints.
- ▶ **VPL (Requires Separate License):**
 - Supports a growing cloud database of over 300 million part numbers.
 - Requires Vendor and MPN in data.
 - Downloads machine-neutral shapes.

Process Preparation OEM Version Node-locked licensing.



Process Preparation 3D Board Viewer



VPL

Requested minimum configuration:

Programming Station (RC5.17 and *Process Preparation* installed): PC c/w Windows 10, RAM 16GB minimum
Preparation Station (RC5.17 installed): PC c/w Windows 10, RAM 8GB minimum

As part of our policy of continuous development, specifications are subject to change without notice.

www.eurolacer.com

Europlacer UK
30 Factory Road, Upton Industrial Estate,
Poole, Dorset BH16 5SL
United Kingdom
contact@eurolacer.co.uk
+44 (0)1202 266500

Europlacer Asia Pacific (excl. China)
No. 126-16, Section 4,
Zhongxiao East Road, Da'an District,
Taipei City 106071
contact-apac@eurolacer.com
+886 (0)3 356 2778 (Giantec Electronics Inc.)

Europlacer Americas
4640 E. Elwood St., Suite 14,
Phoenix, AZ 85040
USA
contact@eurolacer.com
+1 (480) 672 1100

Europlacer Italy
Via Flavia, 35,
34148 Trieste
Italy
contact@eurolacer.it
+39 (0)40 832 0563

Europlacer France
Route de Cholet,
85620 Rocheservière
France
contact@eurolacer.fr
+33 (0)2 5131 0303

Europlacer Spain
AV. Atenas 127,
19170 El Casar Guadalajara
Spain
contact@eurolacer.es
+34 (0)673 171 249

Europlacer China
Floor 1, Building 1, No.80 Huashen Road,
Shanghai, Waigaoqiao, Free Trade Zone,
200131, China
contact-china@eurolacer.com
+86 (021) 5868 3500

Europlacer Deutschland GmbH
Sebastian-Kneipp-Strasse 41
60439 Frankfurt am Main
Germany
contact@eurolacer.de