

DATASHEET

STCS

VMir



> Media for this machine

Reference of the product
14-01-0022

Technology
 Infrared

The STCS-VMir is a heat shrink system, based on infrared technology. It's designed for workbench applications and can process several parts at the same time.

The same machine can be used on several applications since it's equipped with a fast exchangeable shrinking fixture system.

The shrinking fixtures are designed according with the application specifications, making them ideal for special applications.



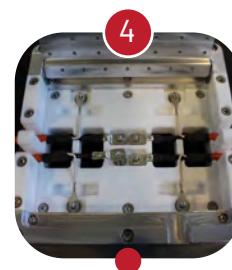
Fast interchangeable shrinking fixture system



Open work area for faster setup time



New and improved interface based on touchscreen technology, that allows network communication



Fixtures can be customized for the most challenging and complex applications

Technical Data

WORKING TEMPERATURE

Min - Max [°C] / [°F] 250-500 / 482-932

SHRINKING TIME

Min - Max [s] 1-100

MEASUREMENTS

Width; Length; Height
[mm] / [in] 540; 591; 455.5 /
21.3; 23.3; 17.9

Weight [kg] / [lbs] 37.5; 82.7

POWER SUPPLY/CONSUMPTION

Supply 230 [V] @ 50Hz

Consumption 500 [mA] to 7 [A] (Max.2000W)

PNEUMATIC

Supply Quick Hold Socket Ø8 [mm]

Supply Pressure Min: 5bar; Max: 7bar; Rec: 6bar

CONNECTIONS

Barcode Reader USB

Temperature Sensor Type K Thermocouple

Power Line 1 IEC C20 Socket

Programming Touchscreen, Barcode Reader,
External Device

Interface Touchscreen, Buzzer and LED

SHRINKING CHAMBER

Shrinking Chamber [mm] / [in] 120; 120; 57 / 4.7; 4.7; 2.2

Min-Max Tube Ø [mm] / [in] 0-45 / 0-1.8

Min-Max Tube Length [mm] / [in] 0-120 / 0-4.7

Min-Max Cable Ø [mm] / [in] 0-45 / 0-1.8

Min-Max Cable Length [mm] / [in] -

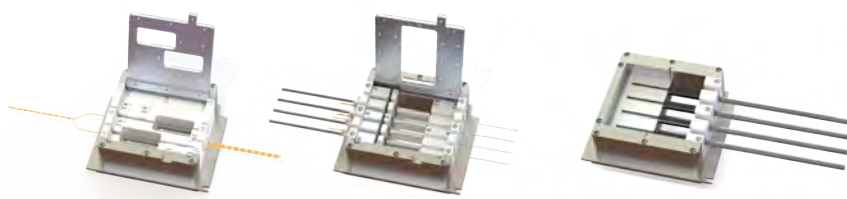
CALIBRATION

Calibration Probe ref.: 06-01-0277

Features

- Adjustable parameters: process temperature, shrinking time, etc.;
- Easy and fast interchangeable shrinking fixtures;
- Two different operating modes: M1 with temperature and shrinking time control; and M2 with pre-programmed references (999 in total);
- The pre-programming of references can be done manually, using a PC with STCS-RCT software or using a USB stick;
- Automatic selection of references using a barcode reader or manually on the touchscreen;
- Easy firmware upgrade using a USB stick;
- Use of labels for each shrinking time inside a reference;
- Built-in cooling system;
- Manual and automatic calibration;
- Programming mode password protected;
- Special maintenance mode for hardware debug;
- External temperature probe connection for temperature reading and offset adjustment;
- Automatic cool down cycle to extend the lifetime of components;
- Partial and total cycle counter;
- Communication with ultrasonic welding machines;
- Working time counter;
- Network communication;
- Interchangeable system language including: English, Portuguese, French and Spanish (others on demand).

Options



- Custom shrinking fixture
Ref: 06-01-0222



- Dual fixture
Ref: 27-17-0005