



AQUBE® XH5

Fully automatic high end 3-tank, 3-circuit PowerSpray® ultra-fine cleaning system for cleaning of assembled PCBs

Cleans PCBs, hybrids and misprints from flux residues, resin, copper, oxide and soldering support substances

Capacity: up to 176 (2.8m²) eurocards in up to two variable drawer baskets

Part number: 0905AQ5XH31 / 0905AQ5XH41 (HT version)

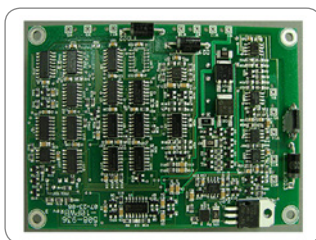


Certifications:

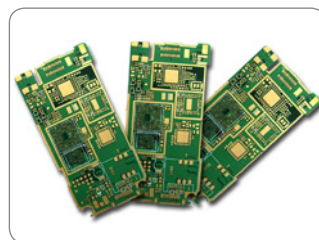
This system in its basic version was certified for its energy and water saving processing, for easy operability and for the standard integration of comprehensive safety features.

- * Three tank system with three separate circuits
- * Intelligent network connectivity for implementation in industry 4.0 smart factories
- * Fully automatic 4step (optional up to 5step) process: cleaning, (MediumWipe®), rinsing (tap water), DI-water rinsing, drying with VMH®-TurboDigital hot air
- * Horizontal PTFE mounted rotor system with up to four asynchronous spray rotors for thorough wetting (no blind spots)
- * Automatic monitoring of ionic residues contamination and controlling of rinse water quality
- * Process and service intervals PLC controlled
- * Event issuing and software control via touch screen
- * EDGELESS Design and VARAccess® service access: maximum capacity, easy maintenance on a very small footprint
- * HT version for high temperature cleaning and rinsing up to 80 °C available

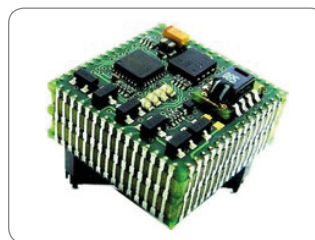
Key applications



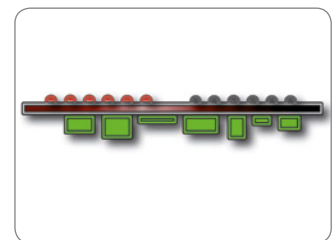
Assembled PCBs



Hybrids (HDIs)



Hybrids (SiPs)



Misprints

The new kolb AQUBE® series offer next-generation cleaning systems - even more efficient, even more compact, easy to handle and maintain, pre-equipped for extended water management and cyber-physically ready for the smart factory (SF ready).

AQUBE® XH5 is a completely German engineered and manufactured fully automatic PCB ultra-fine cleaning system with a capacity of up to 176 (2.8m²) eurocards per cleaning cycle.

The three-tank, three-circuit configuration ensures very short cycle times, low running costs and makes this system the perfect economic choice for the precision cleaning of assembled PCBs.

The cleaning system can be operated with all common electronics cleaning supplies (detergents / chemistry, etc.) which are approved by the manufacturer.








AQUBE® XH5

Fully automatic high end 3-tank, 3-circuit PowerSpray® ultra-fine cleaning system for cleaning of assembled PCBs

Part number: 0905AQ5XH31 / 0905AQ5XH41 (HT version)



Application overview

 Most suitable	 Optional suitable	 Optional suitable	 Optional suitable	 Not suitable
Assembled PCBs Hybrids Misprints	Stencils Screens, PumpPrints Misprints	Solder frames Solder carriers Solder masks	ESD Boxes Containers Magazines	Condensation traps Filters Steel sheets

Optional suitable applications can also be optimally realized with the appropriate options.

Cleaning (key process 1): From the cleaning tank (A) the cleaner liquid is sucked by a magnetically coupled pump unit and routed with a controllable volume flow through a separate circuit into the PTFE mounted ASYNCHRO® stainless steel spray rotors with patented PUSHFORCE® nozzles. Their geometry ensures a comprehensive and thorough cleaning, even in inaccessible and critical areas. After the washing procedure, the valve switchover of the process chamber unlocks the cleaning circuit until the next process run.

MediumWipe® (optional intermediate process): The remaining cleaner is blown off from the clean products and blown out of the cleaner circuit and recirculated into the cleaning tank before the valve switchover closes.

Rinsing with tap water (key process 2): From the first rinsing tank (tank B), the water is pumped through the separate second circuit into the spray rotors. Tap water has (compared to DI / DM water) the advantage of lower surface tension and thus flushes also critical points as low standoffs more efficient.

MediumWipe® (optional intermediate process): The remaining water is blown off from the products and blown out of the cleaner circuit and recirculated into the rinsing tank.

Clear rinsing with DI / DM water (key process 3): The DI / DM water is produced in an integrated MB-cartridge from tap water and kept in the second rinsing tank (tank C). Through the third cycle it flushes conducting ions of the preliminary processes. This process is repeated automatically until the remaining amount of ions falls below the programmed value.

MediumWipe® (optional intermediate process): Blowing off and recirculating the remaining DI / DM water into the rinsing tank.

Drying (key process 4): The clean products are dried with the patented VMH® (Venturi Mixed Hot air) technology. A high volume flow of normal circulating air is blown into a venturi nozzle. The resulting differential pressure there (passively) sucks on a small amount of very high temperature air. The resulting air mixture provides for uniformly high drying temperature (adjustable between 45 and 120 °C) all over the process chamber. Further advantages are robustness and low cost of ownership. Energy is only needed for a fan and the heating of a very small amount of air; the rest is executed by pressure differences and air duct geometry.

Maintenance: The system has a VARAccess® maintenance access system with recessed, variable doors and removable panels. In the maintenance area among others are the pump-out set, the optional re-dosage unit with space for a 25 liter detergent and a 5 l additive container as well as the MB cartridge for DI / DM water processing. Tank levels as well as pressure values and maintenance cycles are monitored by the PLC and displayed on the touch screen.



AQUBE® XH5

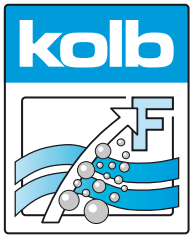
Fully automatic high end 3-tank, 3-circuit PowerSpray® ultra-fine cleaning system for cleaning of assembled PCBs

Part number: 0905AQ5XH31 / 0905AQ5XH41 (HT version)



Main standard features

- PowerSpray® technology bundle: magnetically coupled X-power pump unit, twofold ASYNCHRO® volume-spray rotorsystem with low maintenance PTFE mounted stainless steel rotors with PUSHFORCE® nozzles, "Option100" softwareprogram (100 freely selectable programs)
- PolyPower® pump-nozzle configuration with power pump unit
- EATON Programmable Logic Controller (PLC) with module extension for special programming and technology extensions
- Smart Factory ready: DNAccess® (standard) for remote control (see options) and traceability with retractable touch monitor and integrated industrial PC (see options)
- High resolution 10" (1.024 x 600 px) display with capacitive multi-touch and intuitive process view
- Fourfold alternating LED status light bar integrated in the system frame
- Lower VA drawer basket, ESD-safe with grounding connection for the operator
- Cartridge fine filter for cleaning and both rinsing circuits
- Full flow coarse filter (process chamber)
- Heater for tank A (cleaning)
- Automatic monitoring of ionic residues contamination and gauging of rinse water quality
- Adjustable DI / DM water mixing and blending unit
- VMH® TurboDigital hot air evaporative drying (control range approx. 45 - 120 °C)
- ClosedLoop reprocessing of cleaning and rinsing fluids
- HMA software and pre-equipping for HMA hardware (Heavy Metal Adsorber) for the cleaning circuit (see options)
- Spare space for MB- / DI-cartridge for deionized (DI) and demineralized (DM) water
- Exchange for rinse water and pump out unit
- Safety features: safety interlock on the process chamber door, overflow alarm for all tank sections, overheating protection for all heating and drying elements, end switches for all motor-driven valves and drives, personnel protection insulation
- VARAccess® service access with right and left-hinged side doors as well as unhinging possibility for side doors, front panel, and rear supply rail
- EDGELESS housing design. Doors, cover panels and hinges without edges, depot for traceability scanner and monitor in the right side panel
- Process sections made of electrolysis resistant elements



AQUBE® XH5

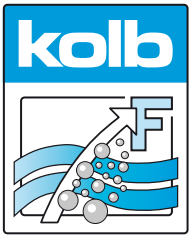
Fully automatic high end 3-tank, 3-circuit PowerSpray® ultra-fine cleaning system for cleaning of assembled PCBs

Part number: 0905AQ5XH31 / 0905AQ5XH41 (HT version)



Main options

- | |
|---|
| <input type="checkbox"/> Automatic detergent concentration measurement / control |
| <input type="checkbox"/> Automatic re-dosage unit for 25 l detergent and 5 l additive container |
| <input type="checkbox"/> Automatic water change for cleaning circuit (only HT version) |
| <input type="checkbox"/> Descaling unit to reduce the lime content in the rinsing water |
| <input type="checkbox"/> Drip & storage reservoir |
| <input type="checkbox"/> Exhaust unit |
| <input type="checkbox"/> HMA filter (Heavy Metal Adsorber) unit for the cleaning circuit |
| <input type="checkbox"/> HT Version for high temperature cleaning up to 80 °C |
| <input type="checkbox"/> MB / DI cartridge for deionized (DI) and demineralized (DM) water |
| <input type="checkbox"/> MediumWipe® unit for further optimization of detergent and rinsing fluid use |
| <input type="checkbox"/> Optional lacquering (frame rack and coverings) |
| <input type="checkbox"/> Permanent automatic rotor run control |
| <input type="checkbox"/> PolyPower® XL configuration with XL-Power pump unit |
| <input type="checkbox"/> Remote Control (remote monitoring, mailing, etc.) |
| <input type="checkbox"/> Sediment filter (tank A) |
| <input type="checkbox"/> Speed load cart (reduces downtime for loading by more than 75%) |
| <input type="checkbox"/> Status light fivefold to display the current process state |
| <input type="checkbox"/> Traceability unit with PLC data scanner and retractable touch monitor and industrial PC with Intel processor |
| <input type="checkbox"/> Upper VA drawer basket with ASYNCHRO® PTFE mounted stainless steel TopDown-double rotors with PUSHFORCE® special nozzles |
| <input type="checkbox"/> XL-Power pump unit |

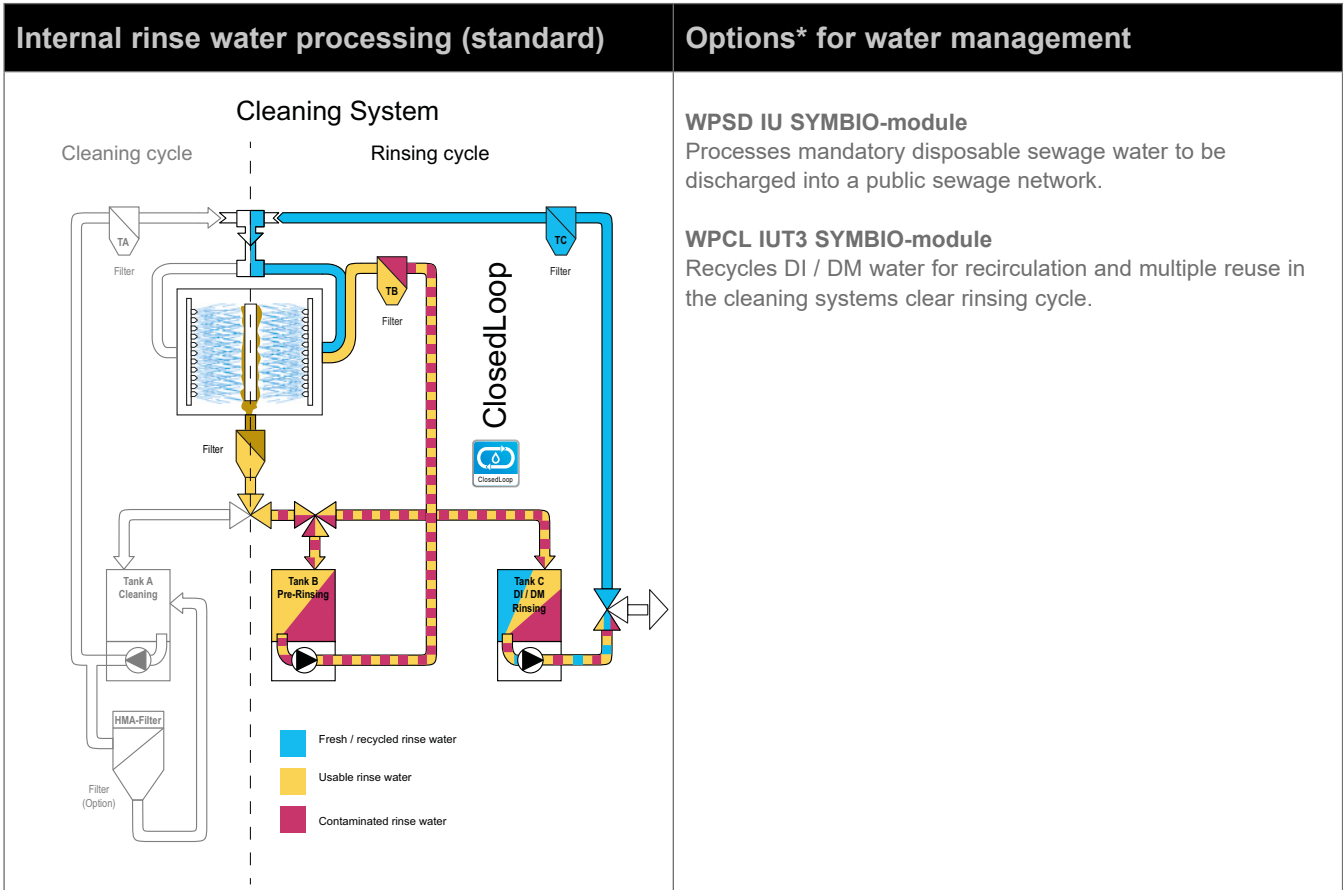


AQUBE® XH5

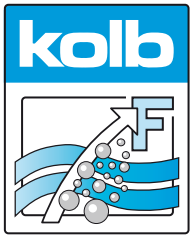


Fully automatic high end 3-tank, 3-circuit PowerSpray® ultra-fine cleaning system for cleaning of assembled PCBs

Part number: 0905AQ5XH31 / 0905AQ5XH41 (HT version)



* Operating companies of industrial cleaning systems are responsible for proper disposal of wastewater / rinse water and (wasted) cleaning detergent. Further information on wastewater management at www.kolb-ct.com/systems/water-management/, consulting requests to info@kolb-ct.com



AQUBE® XH5

Fully automatic high end 3-tank, 3-circuit PowerSpray® ultra-fine cleaning system for cleaning of assembled PCBs

Part number: 0905AQ5XH31 / 0905AQ5XH41 (HT version)



Technical data

Technology base	kolb PowerSpray®
Capacity	176 (2.8 m ²) eurocards
Process chamber dimensions	W 540 • D 590 • H 570 mm
Usable space lower basket only	W 450 • D 475 • H 520 mm
Usable space utilizing lower and upper basket	W 450 • D 475 • H 225 mm (two times)
Volume tank A (cleaning)	ca. 55 l
Volume tank B (rinsing) & C (DI-rinsing)	up to 35 l each
Power supply	400 V AC, 16 A CEE / 3PH / 50 or 60 HZ
Power consumption	approx. 3.8 kW
Control system	PLC (EATON)
Temperature load	up to 55 °C (standard system), up to 80 °C (HT-version)
Control range drying	approx. 45 - 120 °C
Filter system	up to four stage - 1. Full flow coarse filter < 2 mm, 2. Sediment filter inside the tank, 3. 20" fine filter (1 - 100µm - process dependent), 4. HMA filter
Supply connection 1 (tap water)	3/8", hose connection 14 mm with 30µm water filter (prov. by customer: inlet water quality < 350 µS conductance value (< 10° dH) or option descaling unit)
Supply connection 2 (DI / DM water)	1/4", hose connection 14 mm with 30µm water filter (DI-net prov. by customer or bridging to tap water)
Supply connection 3 (compressed air)	6 - 8 bar (100 l / min) for HT-version or optional MediumWipe® process
Rinse water drain connection	3/4", hose connection 25 mm with integrated pump out system
Exhaust connection	Ø 160 mm, exhaust capacity 200 to 300m ³ / h
Operating condition room temperature	20 - 35 °C
Operating noise	63 dB (A)
Footprint / Empty weight	920 x 1.200 mm / 350 kg

