

Bold & Flexible

DECAN L1



Next Generation Multi-Purpose Chip Mounter

DECAN L1

- Enhanced Actual Productivity
- Improved Placement Quality
- Reduced Loss

Visible improvement in quality with expansion in coverage for odd-form, DECAN L1 will bring you the most optimized productivity for mix-job chip placement

Specification

Model Name			DECAN L1	
Alignment			Fly Camera + Fix Camera	
The number of spindles			6 Spindles x 1 Gantry	
Placement Speed *			30,000 CPH (Optimum)	
Placement Accuracy *	Chip		±40 μm @ Cpk≥ 1.0	
	QFP		±30 μm @ Cpk≥ 1.0	
Component Range	Fly Camera		0402 ~ □21mm	
	Fix Camera		~ □55mm ~ L100mm Connector	
	Max. Height		12mm (Fly), 25mm (Fix)	
PCB Size (mm)	Min.		L50 x W40 *	
	Max.	Standard	L510 x W510	
		Option	~ Max. L1,500 x W460, L1,500 x W510	
PCB Thickness (mm)			0.38 ~ 4.2	
Feeder Capacity (8 mm Standard)		Standard	120ea / 112ea (Docking Cart)	
Utility	Power		3Phase AC200 / 208 / 220 / 240 / 380 / 415V	
			Max. 3.5kVA	
	Air Consumption		5.0~7.0kgf/cm	
			50Nℓ/min (Vacuum Compressor)	
Weight (H900 mm Standard)			Approx. 1,600 kg	
External Dimension (Standard)			1,430(L) x 1,740(D) x 1,995(H) mm	

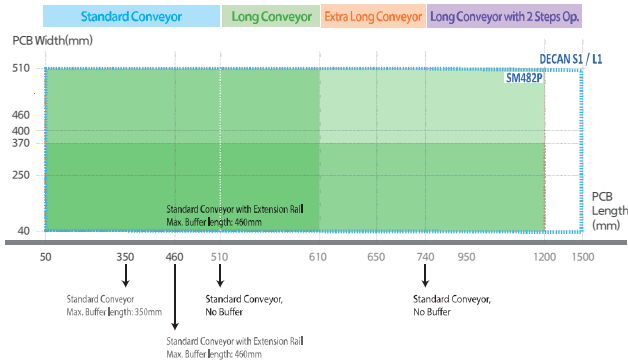
* Please contact our sales representative for L1,500mm

* Based on optimized condition

Best-in-Class Performance

Maximized PCB Coverage, Best-in-Class

- 510 x 510mm (Standard) / 1500 x 510mm (Option)
- Supports up to 1,500mm(L) x 460mm(W)

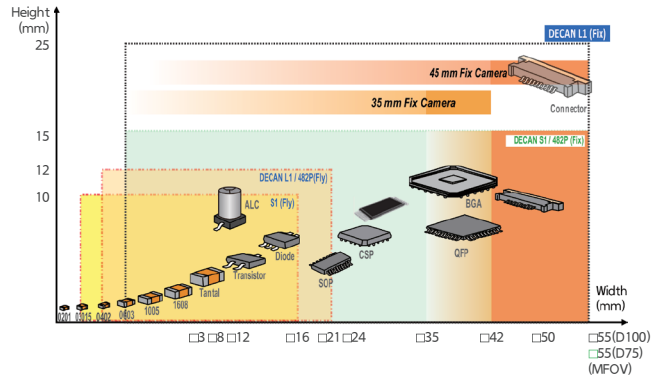


Enhanced Actual Productivity for Odd-Form Placement

- Head Pitch 30mm → □21mm, Possible to hold 6 Pieces at the same time
- Improved placement speed with optimized motion recognition on stage camera

Enhanced Vision Recognition with High-Resolution Camera

- 0402 ~ □21mm Recognition with Fly Camera
- Max. Height : 12mm(Fly), 25mm(Fix)



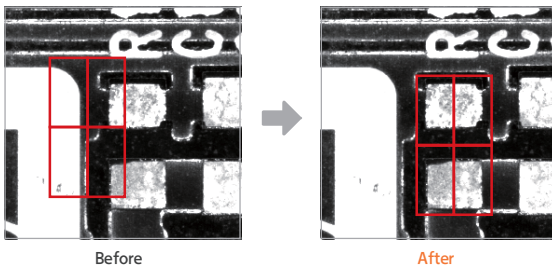
Faster Multi-PCB Recognition

- Improved recognition speed with High-Speed Fiducial Camera

Enhanced User Convenience

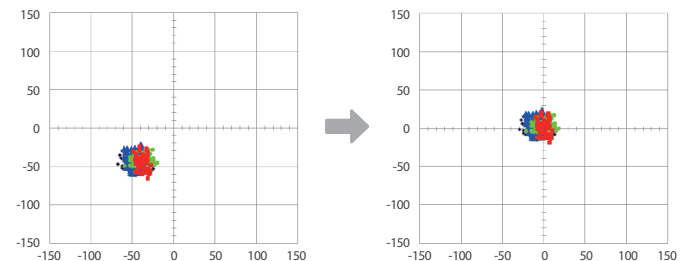
Automatic Placement Point Teaching

- Automatically check and adjust placement coordinate for standard chips. Reduced lead-time in job change for micro adjustment for placement coordinates.



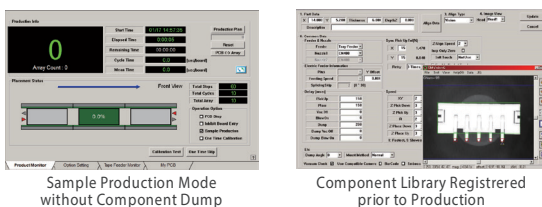
Auto-Calibration to Maintain Placement Precision during Production

- In order to maintain a high precision placement during production, auto-calibrates placement coordinates at a selected time.



Zero Component Waste in Sample Production

- Misplaced components are not wasted during the initial production. Component information and PCB coordinates are adjusted to achieve ZERO loss upon equipment change.



Semi-Extend Mode

- When Producing PCBs with the same array pattern, placement points are only scanned for 1 pattern(Non-Extend). However, the actual production is done for all PCBs(Extend) for efficient production & convenient JOB Programming.

Preset Unified Lighting Level

- Lighting is set at the same value to minimize changing time, to reduce deviation between equipment, and to enhance component DB management.

Transfer Feeder Adhesion Information for Quick JOB change

- When changing a model, reduces the model changing time by succeeding the pickup information of a similar model

Support Components from Multi-Supplier

- Possible to register and manage the same component from ≥2 suppliers in 1 part number. No need to interrupt production to change program due to multi-vendor component issue.

• The specification in this catalog is actual value measured under designated condition. These are subject to change without prior notification.
• The above value may vary depending on operating condition. For an inquiry, please contact our sales representative or visit our website.

USA 6000 Phyllis Dr. Cypress, CA 90630, USA T +1-714-373-4200
Europe T +82-70-7147-6322, 6311 F +82-31-8018-3721 (Mexico E mexico@hanwha.com)
Asia T +82-70-7147-6320, 6323 F +82-31-8018-3721 (Vietnam T +84-96-880-7191 / India T +91-98100-01345)
Korea HQ 6, Pangyo-ro 319beon-gil, Bundang-gu, Seongnam-si, Gyeonggi-do, 13488, Korea T +82-70-7147-6258
<https://www.hanwhasemitech.com/en>

Doc No: SMT-DECAN L1-CAT-EN-001 Copyright © 2025 Hanwha semitech Co. Ltd. All rights reserved.



Hanwha