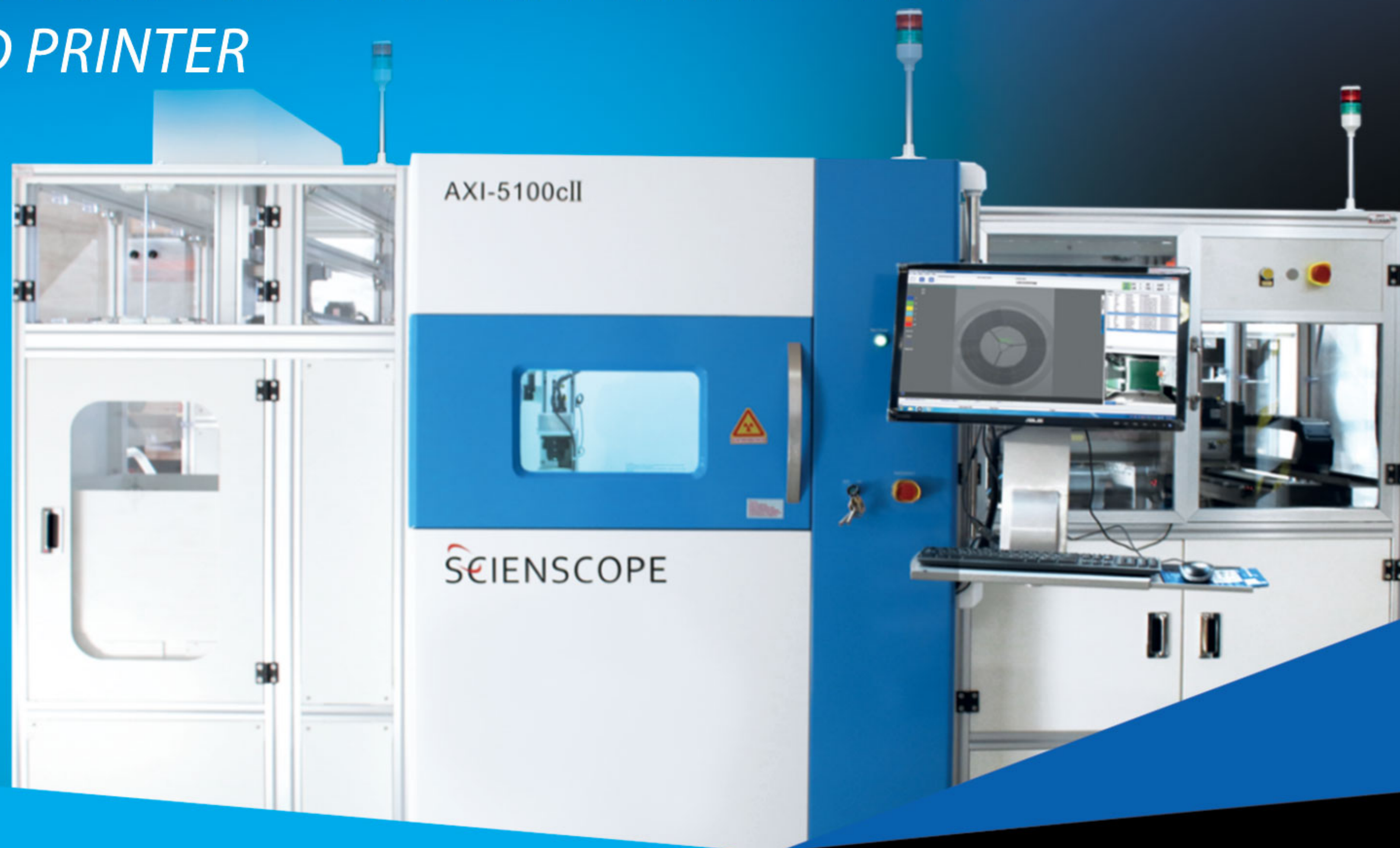


# AXI-5100C II

COMPONENT COUNTING SYSTEM WITH AUTOMATIC  
LOADER AND PRINTER



## AXI-5100c II Component Counting System

The New Scienscope AXI-5100c II is the most advanced, automated component counting system in the world. This automated system communicates with data management providing complete inventory control by using an inline integrated conveyor system. This system counts components faster than any system on the planet. Save time, save money, reduce labor and avoid the dreaded "line down" scenario due to lack of a components. There are different configurations available ask one of our representatives.

### Applications

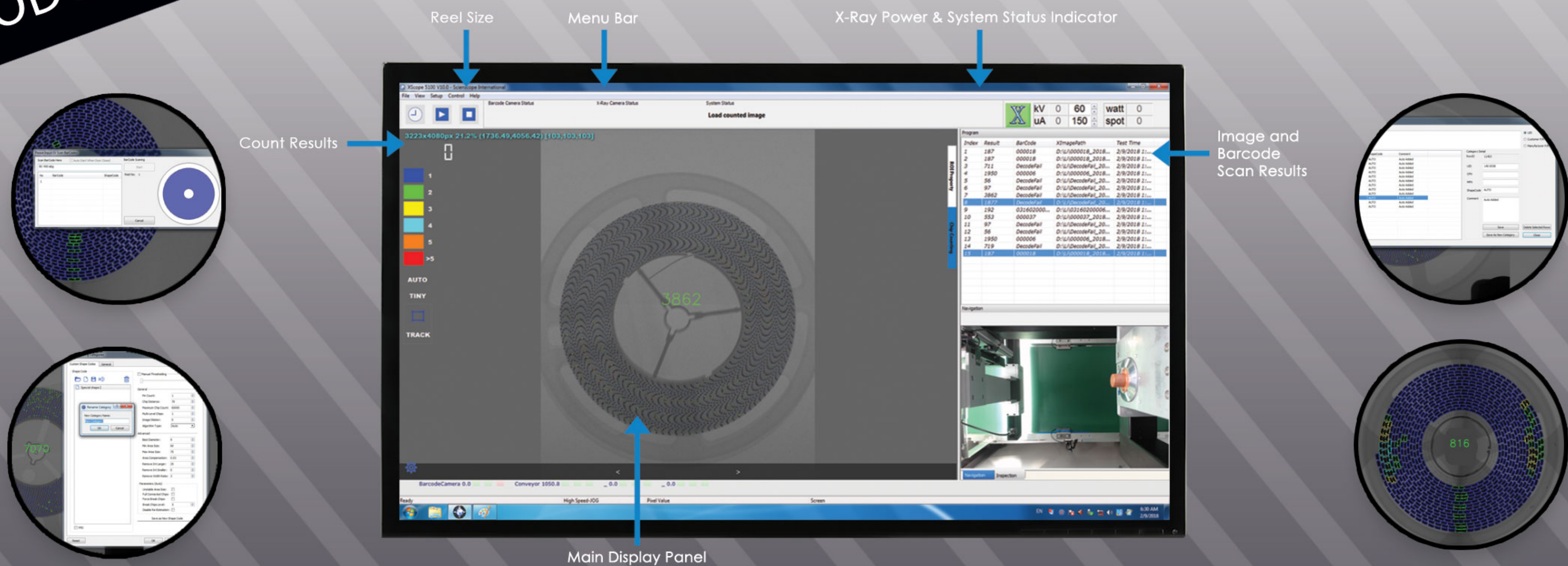
- JEDEC Trays
- 7", 13" and 15" Reels
- BGA Ball Count
- Loose Wound Components
- Cut Strips
- Copper Splice
- Sealed ESD Bags
- Tightly Wound Components
- Desiccant Penetrable

### FEATURING

- Incoming mode, scan label, check MES, receive UID, printer and place new label
- Fast, Intuitive, user friendly software interface with 99.9% accuracy
- Scanning of 7", 13" & 15" reels
- Scanning of JEDEC trays and counting of BGA balls
- Scanning of loose wound components or tightly wound components
- Scanning of sealed ESD bags
- Built in library with automatic storage
- Automatic continuous feeding and positioning
- High-Speed 8k line scan camera
- Smart Reader that automatically acquires one dimensional or two-dimensional code and material height, size, type and other information
- Industrial PC: Microsoft Windows 10 (64-bit)
- Automatic loader and printer
- Flat panel detector, 17" x 17"



**PRODUCT SPECIFICATIONS**



**MACHINE SPECIFICATIONS**

**Reel Loader**

- Dimensions: 1300mm L x 1400mm W x 1800mm H
- Weight: 500kg
- Operating System: PLC
- Voltage / Pressure: 220 V/≥ 0.1Mpa
- Loader Reel Sizes: 7", 13" and 15"
- Maximum Qty of Reels:
  - 7" H 15mm: 200(max)
  - 13" & 15" H 15mm: 50(max)
- Trolleys: 2
- Reel Loader: Trolley
- Reel Rise: Elevator
- Reel Transplant: Manipulator
- Bypass for sealed bags

**Label Printer**

- Dimensions: 1060mm L x 1050mm W x 1800mm H
- Weight: 700kg
- Operating System: PLC
- Voltage / Pressure: 220 V/≥ 0.5Mpa
- Accuracy: ±0.5mm
- Speed of Print and Label: 10S
- Label Size: 60mm x 25mm
- ESD safe
- Printer Zebra 105SL Plus

**Software**

- Docking w/ Intelligent Warehousing
- Reads Barcode Information & Uploads MES/ERP System
- Collects Information From System & Prints Labels Automatically
- Identifies Various Types Of Barcode Formats
- Docking With AGV Tuck

**THIS SYSTEM INCLUDES A 1 YEAR WARRANTY ON PARTS AND LABOR**

**Compliance**

THE SCIENSCOPE X-RAY COMPONENT COUNTER SYSTEMS MEET THE FDA-CDRH REGULATION CFR 21 1020.40 SUBCHAPTER J FOR CABINET X-RAY SYSTEMS. THE FDA-CDRH STANDARD FOR CABINET X-RAY SYSTEMS STATES THAT RADIATION EMISSIONS WILL NOT EXCEED 50 MICRO R/HR 5 CM FROM ANY EXTERNAL SURFACE. THE X-SCOPE X-RAY INSPECTION SYSTEMS TYPICALLY HAVE A RADIATION EMISSION READING OF LESS THAN 20 MICRO R/HR 5 CM FROM ANY EXTERNAL SURFACE. ALL SCIENSCOPE X-SCOPE X-RAY SYSTEMS HAVE A CE APPROVAL. SCIENSCOPE X-SCOPE X-RAY SYSTEMS ARE CLASSIFIED AS "CABINET X-RAY SYSTEMS" AND REQUIRE NO EXTERNAL RADIATION SHIELDING. WELDED STEEL / LEAD-STEEL CONSTRUCTION, NO VISIBLE SHIELDING.

FDA ACCESSION NUMBER: 0710198

CE REFERENCE NUMBER: CN.CE.0402-05.09

