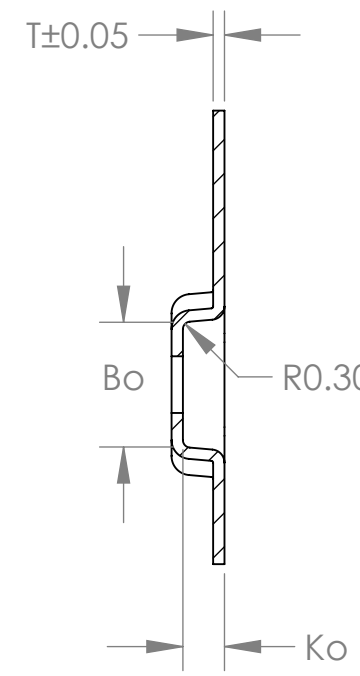
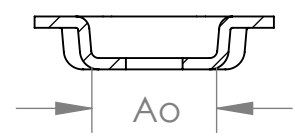
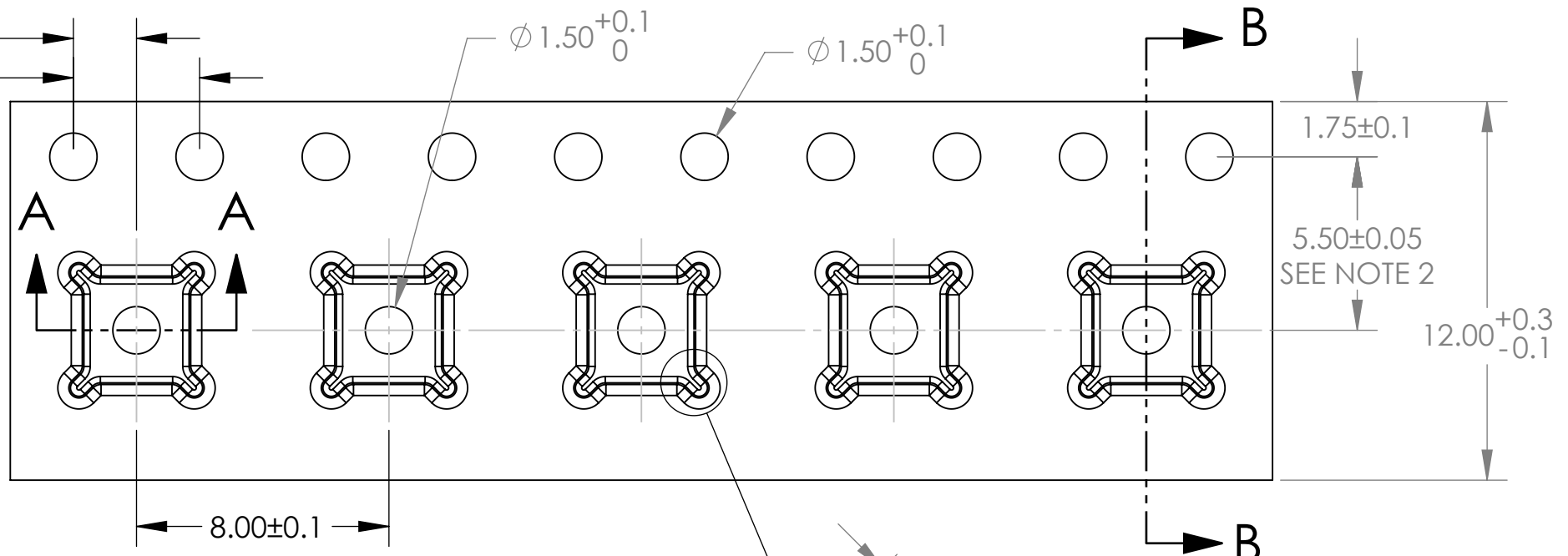


REVS				
REV.	DESCRIPTION	DATE	GS#	APPROVED
1	DRAWING FORMAT CHANGE	7/16/2001		BTH
2	ADDED MATERIAL TABLE, DRAWING FORMAT CHANGE	1/19/2023	78366	MME
3	ADDED BC MATERIAL TO TABLE	8/10/2023	81536	TMO

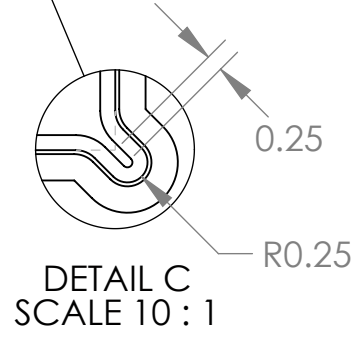


SECTION B-B

2.00±0.05 SEE NOTE 2
4.00 SEE NOTE 1



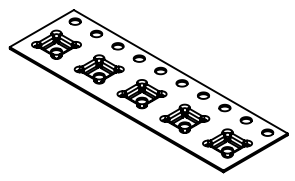
SECTION A-A



DETAIL C
SCALE 10:1

PART NUMBER	T	MATERIAL	DRAWING #
ML0303-AC	0.30	PS+C	T102529AT
ML0303-AKC	0.30	PS+C	T121319BT
ML0303-ABC	0.30	PC TRILAM.	T121841BT

	DIM	±
Ao	3.30	0.1
Bo	3.30	0.1
Ko	1.10	0.1



SCALE 1:1

- NOTES:
- 10 SPROCKET HOLE PITCH CUMULATIVE TOLERANCE ±0.2
 - POCKET POSITION RELATIVE TO SPROCKET HOLE MEASURED AS TRUE POSITION OF POCKET, NOT POCKET HOLE.
 - Ao AND Bo ARE MEASURED ON A PLANE AT A DISTANCE "R" ABOVE THE BOTTOM OF THE POCKET.

THE INFORMATION CONTAINED IN THIS DRAWING IS THE SOLE PROPERTY OF ADVANTEK INC. ANY REPRODUCTION IN PART OR WHOLE WITHOUT THE WRITTEN PERMISSION OF ADVANTEK INC. IS PROHIBITED.



TITLE: ADVANTEK PART DRAWING NUMBER ML0303-A
CARRIER TAPE

ALL DIMS IN MILLIMETERS PER ASME Y14.5M TOLERANCES UNLESS - SPECIFIED 1 PL ± 0.2 2 PL ± 0.10	MATERIAL SEE TABLE	APPROVED BY: BTH
CAD GENERATED DRAWING, DO NOT MANUALLY UPDATE DO NOT SCALE DRAWING	DATE 10/7/1999	SCALE 5:1 SHEET 1 OF 1 SIZE B
	PROJECT # T-9202	DRAWING # SEE TABLE REV. 3