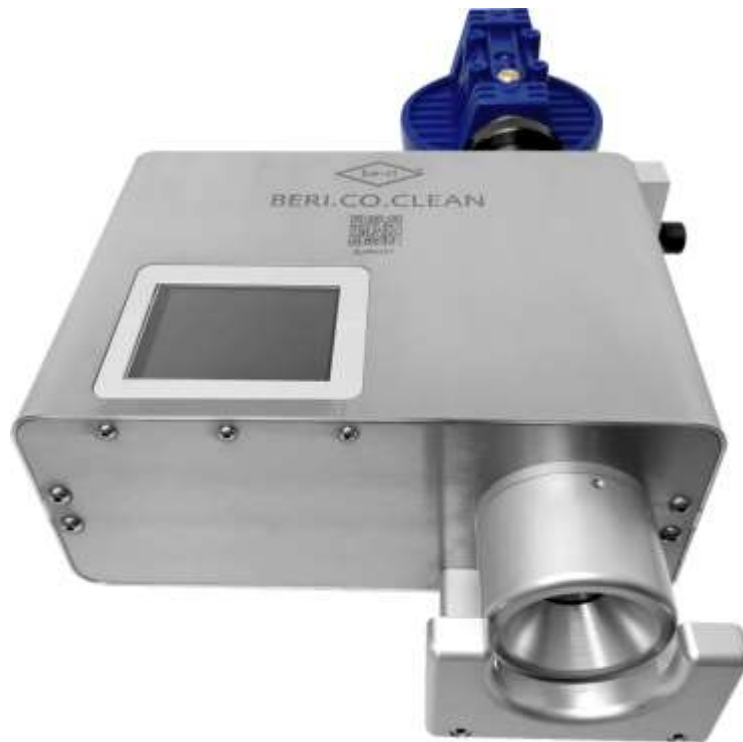


---

# CABLE-CLEANING DEVICE

---



BERI.CO.CLEAN (Standard-Version)

---

## BERI.CO.CLEAN + BERI.CO.CLEAN *Solid*

---

The electro-pneumatic BERI.CO.CLEAN and BERI.CO.CLEAN *Solid* devices have been designed for facilities responsible for cleaning cables, wires, catheters, etc. in order to vacuum off unwanted particles such as chips, dust, talcum or any other microparticles.

Especially when working at coaxial wires and high-voltage cables (HV-cables), that is, when cutting and separating the wire meshes, there come off small and very tiny chips which have by all means to be avoided since they may cause malfunction in the subsequent processing procedures.

The handling of these cleaning devices is very simple: Insert the cable and the suction is activated (or, in case of foot valve: activate suction).

The BERI.CO.CLEAN version has been equipped with a touch-display, with which the suction-duration and the mode (sensor or foot valve) can be selected. You may use suction nozzles of different diameter, as well as different filters.

The BERI.CO.CLEAN *Solid* is a simplified version, reduced to the essential functions, with no display and with a fixed suction duration. The suction is triggered by the built-in sensor and remains active as long as the medium is in the device.

The machines have been designed for wires with an external diameter of ca. Ø 19,0 mm or ca. Ø 31,5 mm. They permit operating on wires up to ca. 270 mm length. Custom sizes are available on request.



**FEINTECHNIK** Telf: +49 . (0)251.96115-0  
**R.Rittmeyer GmbH** Telefax: +49 . (0)251.624 525  
Höltengeweg 103 E-mail: [info@rittmeyer-beri.de](mailto:info@rittmeyer-beri.de)  
48 155 Münster Web: [www.rittmeyer-beri.de](http://www.rittmeyer-beri.de)  
Germany

# Functioning of BERI.CO.CLEAN + BERI.CO.CLEAN *Solid*

## Functions

- Suction mechanism for bar-shaped materials, such as, cables, wires, catheters, etc.
- Triggered by foot valve or optical sensor (Version BERI.CO.CLEAN) or only by sensor (BERI.CO.CLEAN *Solid*)
- Defined airstream in closed system
- Extracted particles are safely filtered out and stored – no loss to the environment
- Robust and industrial-standard structure



BERI.CO.CLEAN Solid

## Technical Data

- |                               |  |
|-------------------------------|--|
| - Cable diameter:             | 19,0 mm, or, 31,5 mm (two versions)                  |
| - Insertion depth (standard): | up to 270,0 mm                                       |
| - Compressed air:             | according to ISO 8573-1                              |
| - Operating pressure:         | 6 – 7 bar  |
| - Triggering                  | BERI.CO.CLEAN: optical sensor; (foot valve optional) |
|                               | BERI.CO.CLEAN <i>Solid</i> : optical sensor          |

## Plug – Power Supply

- |           |                                   |
|-----------|-----------------------------------|
| - Input:  | 100 – 240 V / 50 – 60 Hz / 265 mA |
| - Output: | 24vDC / 0,5A                      |

## Handling

- Manual insertion of the means to be cleaned
- BERI.CO.CLEAN: Operation with sensor or foot switch (optional) can be preselected via the touch display; extraction duration and start of extraction (in seconds) can be preselected
- BERI.CO.CLEAN *Solid*: The "*Solid*" works with sensor triggering; the suction remains activated as long as the cable etc. is in the unit

## Filter

- Washable fine filter cartridge made of nylon with a mesh size of 80 µm for fine solids
- Use of additional filters possible

## Ergonomics

- The position angle of the device can be variably adjusted
- For the optimum working height we recommend mounting on our work tables [BERI.CLEAR.FRAME](#)