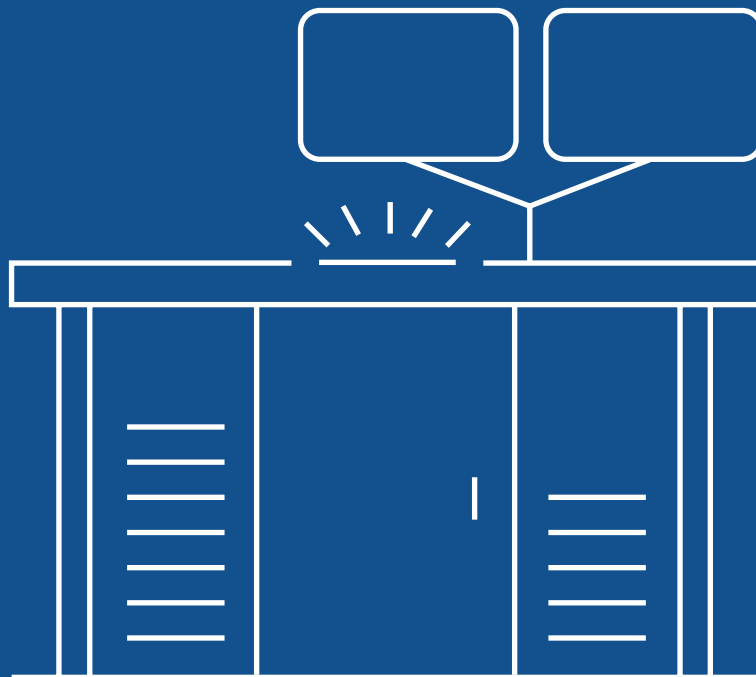


ESSEGI
AUTOMATION

focus on storage solutions

ISM Incoming Material Station

Material management during
the acceptance phase





INTEGRATED SYSTEM FOR COMPREHENSIVE AND RELIABLE TRACKING OF INCOMING MATERIALS

In the field of electronic manufacturing, many materials have to be received, tracked, and traceable throughout the entire production process. Product quality can be ensured only by reconstructing the complete flow of materials. For this reason, it is essential to build a **reliable component management system beginning with delivery all the way to final production.**

The ISM Incoming Material Station offers an advanced solution for the **inspection** and **storage** of incoming materials through an integrated and automated system for **recording** all the necessary **information to identify** the incoming material. The system is capable of cross-referencing data and defining in real-time: availability, any need for replenishment, or storage times.

How it works



ISM Incoming Material Station offers an advanced solution for the **inspection** and **storage** of incoming materials through an integrated system for **recording all the necessary information** to identify the incoming material. The system is capable of cross-referencing data and defining **availability**, any need for **replenishment**, or **storage times** all in real time.

With a click, **details on materials** are read and extracted by advanced software to **create a database record**. At the same time, it is possible to check the incoming material for what has been ordered and what is **missing or excess**.

✔ Part Number Validation

The ISM software verifies the correspondence between the manufacturer part numbers of the new incoming material and an approved list of internal part numbers. The software prevents the initialization of material that is not in the list of approved article codes, ensuring extreme process and product quality.

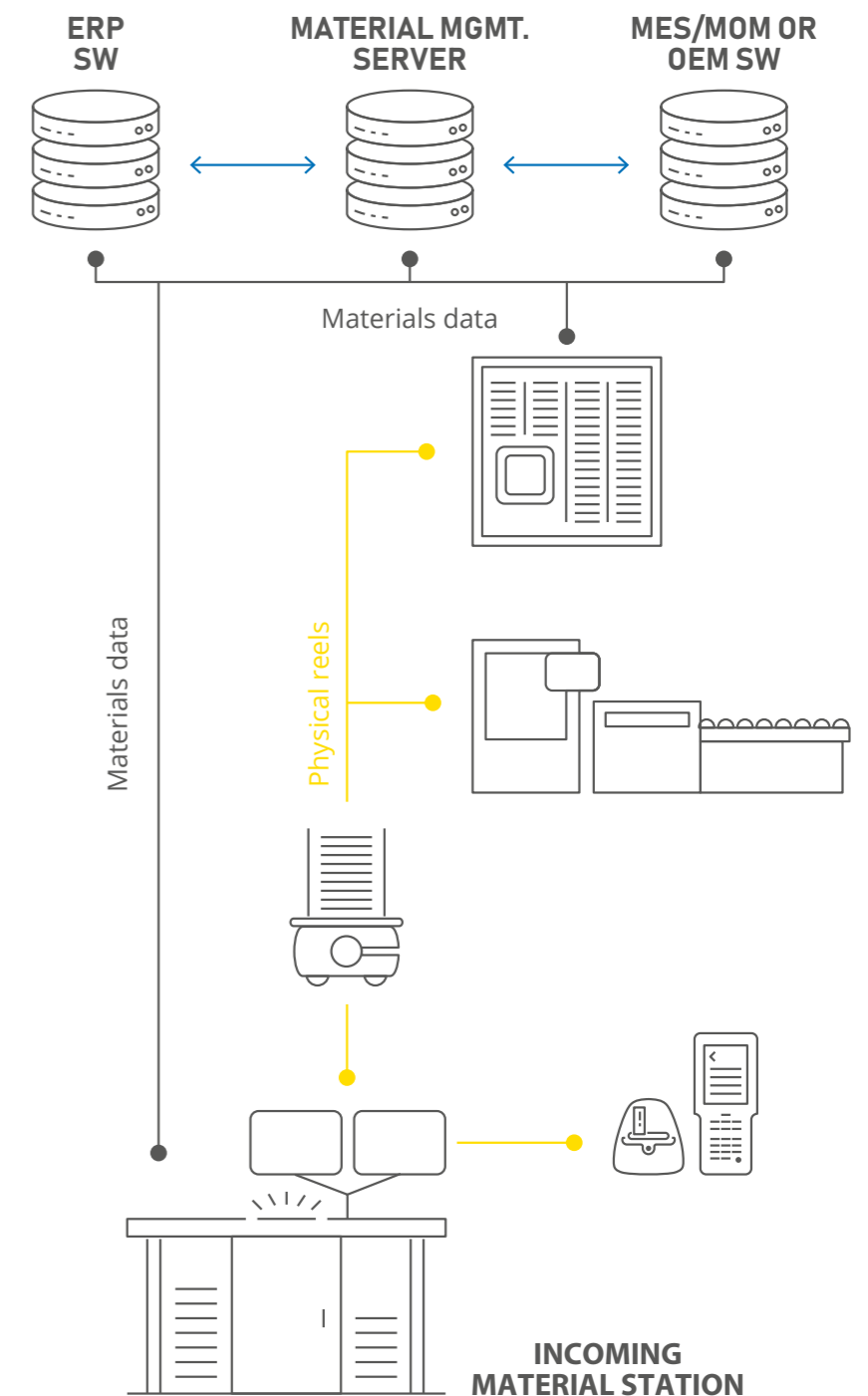
✔ Recognition of 1D/2D Codes

The camera and software are capable of recognizing, analyzing, and storing any 1D/2D code on the new material. The software comes capable of reading standard reel barcode labels (ECIA) used by most manufacturers. It is also possible to quickly create user-defined templates to read labels that do not follow the ECIA standard or to add additional data. Typical fields read include: internal part number, unique ID, quantity, BIN, creation date, MSL, manufacturer PN, lot number, expiration date, supplier, and PO number. Other fields can be added as well.

✔ Advanced information management

In addition reels and other materials, the module is designed to scan and digitize data present in documents, such as:

- Scanning and saving/archiving multipage transport documents (packing lists) or purchase orders
- Creating rules to extract data such as document number, list of part numbers, quantity, etc.
- Displaying order lines, user completion percentage, and operator performance



Advantages



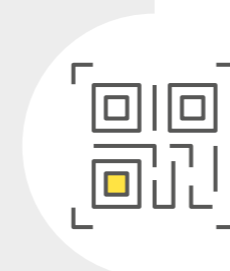
- **UNINTERRUPTED FLOW**
The system optimizes the material flow from suppliers to the production line, reducing delivery times to the production lines and ensuring a smooth and uninterrupted process.



- **NO HUMAN ERROR**
The use of ISM Incoming Material Station significantly reduces the steps of recording incoming materials. As a result, the process is significantly faster and more error proof.



- **EXECUTION SPEED**
Speed, precision, and simplicity in registering new materials, freeing the operator for other tasks.



- **TRACEABILITY**
The system helps track the material from its source throughout the entire production process, facilitating the application of quality standards in the electronics industry.



- **EFFICIENT STORAGE MANAGEMENT**
The system monitors incoming material in real-time, directing the operator where to send the received materials to ensure uninterrupted production.



Features

ISM Incoming Material Station is constructed with a robust metal frame and an **upper antistatic shelf** made of dissipative static laminate, with a **resistivity of 10M Ohm**



The system can:

- ✓ Scan the information on the manufacturer's label using a high-resolution camera
- ✓ Generate a unique progressive code through the built-in printer
- ✓ Produce customized labels

In a single operation, it is possible to:

- ✓ Generate a unique progressive code to identify the roll and electronic components
- ✓ Read all codes and information simply by placing the material on the table
- ✓ Store in the database a photo of each registered item for future viewing and quality checks
- ✓ Update purchase orders in real-time with incoming material quantities
- ✓ Send information to the management system with a single click
- ✓ Interface with other major company systems (ERP, MES, WMS, P&P...)



Technical sheet with different storage capacities



ISM Software

The heart of **integration**

Essegi Automation clearly understands the factors that drive the competitiveness of assembly companies in a global market: **managing storage, planning, and timely response.**

To achieve these goals, a reliable infrastructure for coordinated management of all phases of the production process is required, from receiving to movement and delivery to production lines.

Born out of the need for warehouse management and control, Essegi Automation **ISM software** has evolved over time to become a powerful tool **open to all types of integration and real-time data exchange with all major management systems in the company**, from ERP to MES, to Pick & Place production lines. The integration is key to reducing duplicate data entry, decreasing time spent on data entry, and eliminating human errors and is critical to a lean operation.

Essegi Automation has developed user-friendly, intuitive, and flexible software with data recording capabilities through image scanning, data acceptance from handheld devices, and label printing, as well as MSL management and external position management. An advanced material flow control system that can be further **customized through APIs and custom projects.**



Open and ready for integration with all company software systems

Advantages

- ✓ Up-to-date and comprehensive inventory of all available material information.
- ✓ Efficient organization of materials in the warehouse.
- ✓ Availability of materials at the right time and place without waiting times.
- ✓ Material traceability and the ability to determine the storage period.

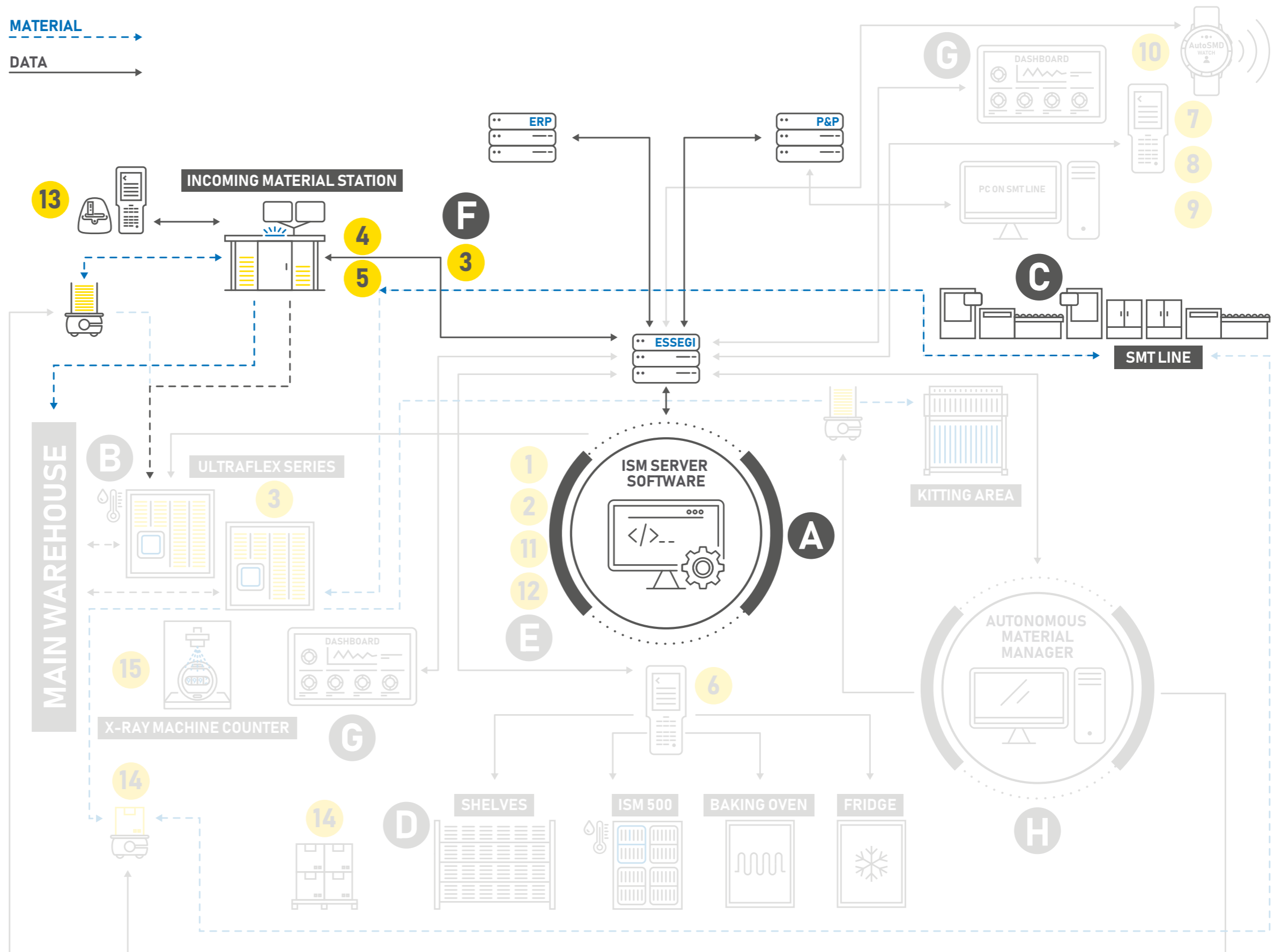
A ISM Server software

Modules

- B** MSL Management
- C** Connections with Pick & Place
- D** Dynamic Warehouse Management
- E** Buffer/Supermarket Management
- F** Advanced Material Receiving Operations Management
- G** Dashboard
- H** Automated Material Handling Management

Options

- 1** Work Order Control
- 2** Alternative Parts Management
- 3** Traceability with Photographic Archive
- 4** Approved Vendor List (AVL) management
- 5** PO matching during receiving/labelling
- 6** Location tracking with mobile devices
- 7** Material picking with mobile devices
- 8** Verification of the correct feeder setup locations
- 9** Visibility of feeder information from handheld devices
- 10** Smart Watch App
- 11** Solder Paste Management
- 12** Baking Management
- 13** Mobile scanning with handheld and label printing
- 14** Traceability of Boxes, Pallets, Trays with CASE BOX functionality
- 15** Connection to X-ray inspection systems



➔ Incoming Material Station **version**



**THE ADOPTION
OF ISM INCOMING
MATERIAL STATION
PROVIDES
MEASURABLE
ADVANTAGES**

IN THE RECEIPT AND
LABELING OF
INCOMING
MATERIALS AND
AUTOMATION OF HANDLING
REDUCE HUMAN ERROR,
ENSURE PRODUCT QUALITY
AND MAKE THE PROCESS
EFFICIENT



ESSEGI AUTOMATION

focus on **storage solutions**

Headquarter

Via della Tecnica, 33
36050 Sovizzo (VI) · Italy

Office

Via Risorgimento, 71
36050 Sovizzo (VI) · Italy

Warehouse

Via della Tecnica, 33
36050 Sovizzo (VI) · Italy

C.F. 04223170244 · P.IVA / VAT No. : IT04223170244

Ph. 0444 376380 · info@essegiautomation.com · www.essegiautomation.com