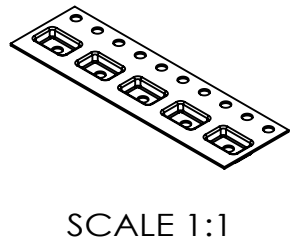
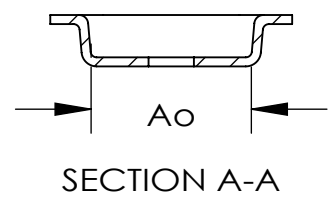
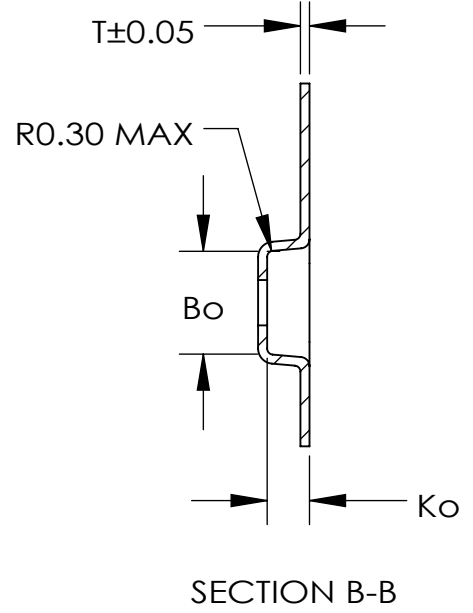
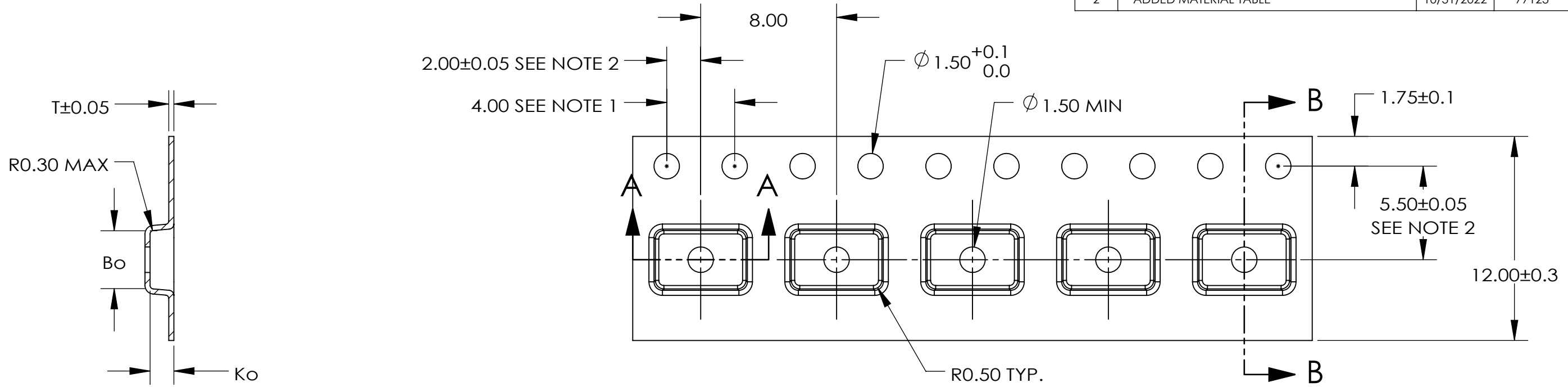


REVS				
REV.	DESCRIPTION	DATE	GS#	APPROVED
1	DRAWING FORMAT CHANGE	12/5/2006	4759	VAW
2	ADDED MATERIAL TABLE	10/31/2022	77123	WL



PART#	T	MATERIAL	DRAWING#
MINSO8-AC	0.30	PS+C	T101660AT
MINSO8-ABB	0.25	PC TRI-LAM.	T121061BT

	DIM	±
Ao	5.30	0.10
Bo	3.40	0.10
Ko	1.40	0.10

THE INFORMATION CONTAINED IN THIS DRAWING IS THE SOLE PROPERTY OF ADVANTEK INC. ANY REPRODUCTION IN PART OR WHOLE WITHOUT THE WRITTEN PERMISSION OF ADVANTEK INC. IS PROHIBITED.



TITLE: **ADVANTEK PART DRAWING NUMBER MINSO8-A CARRIER TAPE**

ALL DIMS IN MILLIMETERS PER ASME Y14.5M TOLERANCES UNLESS - SPECIFIED 1 PL ± 0.2 2 PL ± 0.10	MATERIAL	SEE TABLE		
	DRAWN BY:	JBH	APPROVED BY: TMO	
CAD GENERATED DRAWING, DO NOT MANUALLY UPDATE DO NOT SCALE DRAWING	DATE	8/2/2004	SCALE	4:1
	PROJECT #	2161.00	SHEET	1 OF 1
			SIZE	B
			DRAWING #	SEE TABLE
			REV.	2

- NOTES:
- 10 SPROCKET HOLE PITCH CUMULATIVE TOLERANCE ±0.2
 - POCKET POSITION RELATIVE TO SPROCKET HOLE MEASURED AS TRUE POSITION OF POCKET, NOT POCKET HOLE.
 - Ao AND Bo ARE MEASURED ON A PLANE AT A DISTANCE "R" ABOVE THE BOTTOM OF THE POCKET.