

europlacer



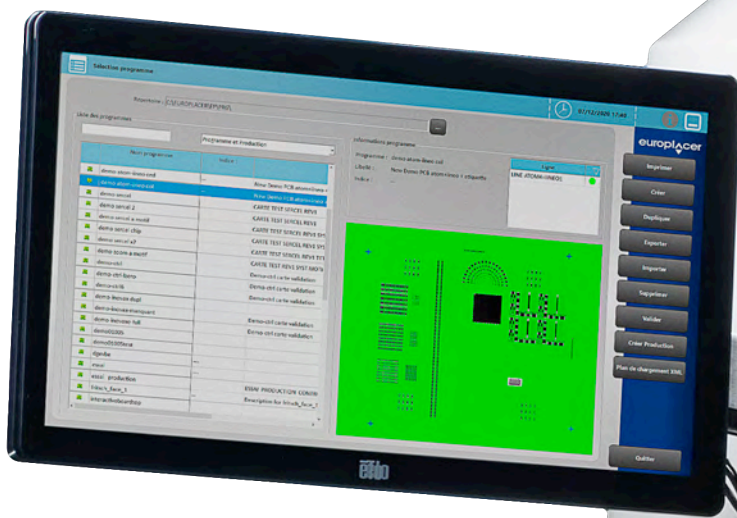
The versatile module



Level-up your line

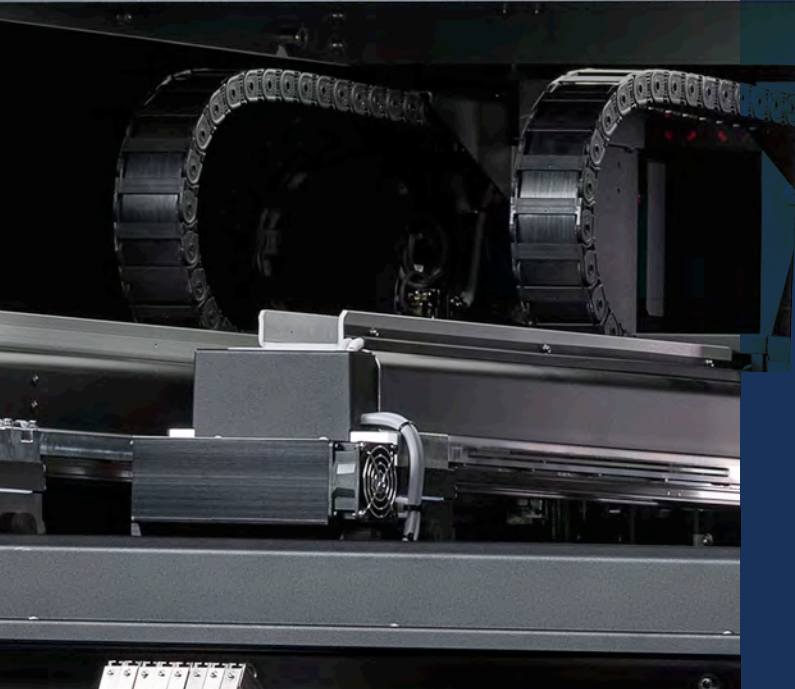
Surface Mount Intelligence

atom



// Intelligent compact placement machines in a smart module form factor perform flexible mounting duties or slot in line to balance throughput down existing or newly configured SMT assembly lines.

//



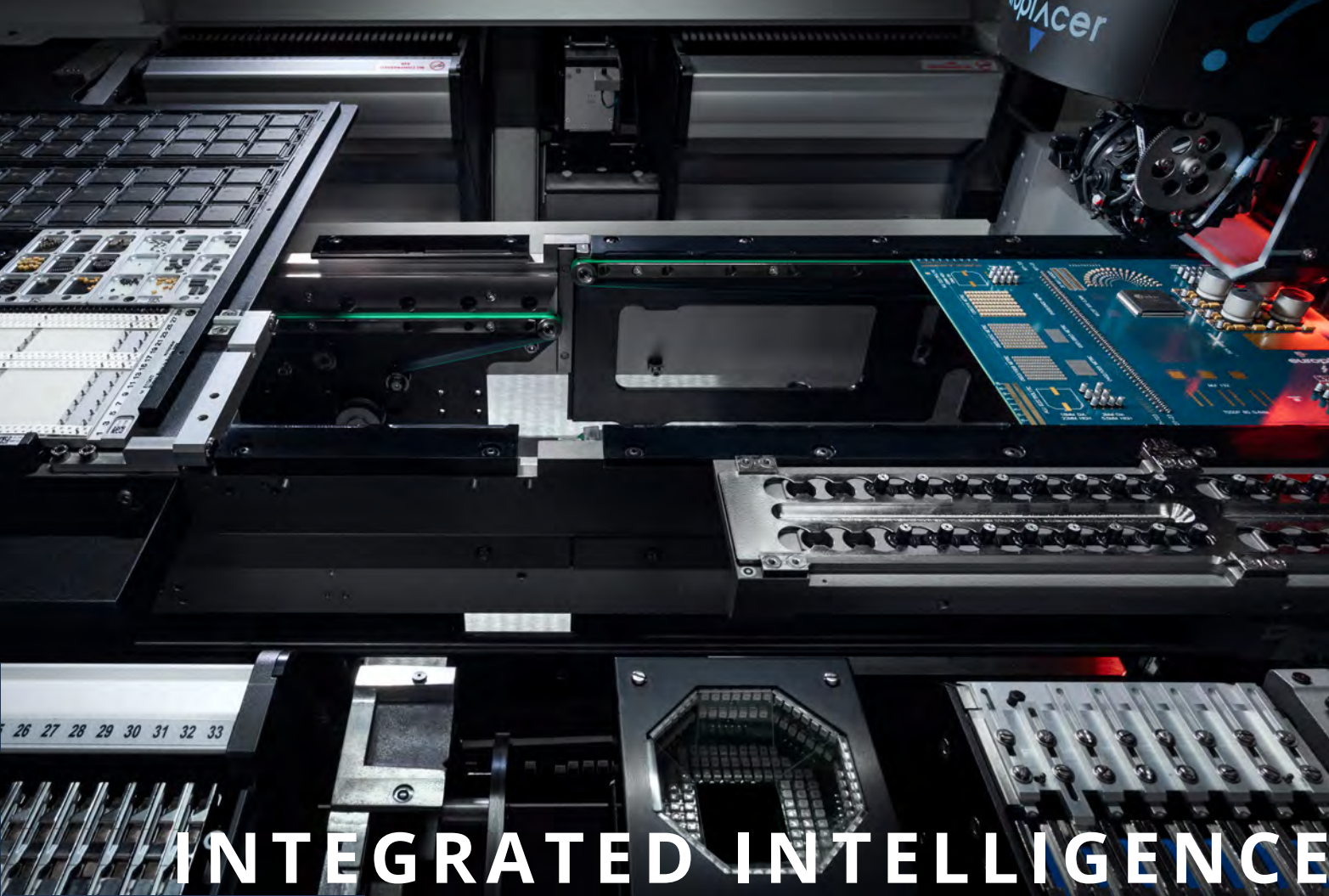
The Versatile Module

While the *ii-A1* can operate in stand-alone mode, offering many of the benefits of innovative atom platform technology, its real value comes when used as a module in line with other Europlacer machines. Featuring a single Tornado turret head with eight or twelve nozzles, *ii-A1* delivers Europlacer's legendary flexibility in the broad range of components this machine can handle along with 164 feeder positions and two different types of internal matrix tray with up to 5 Jedec capacity, all in a compact footprint. A range of options for *ii-A1*, compatible with all atom machines, allows it to be configured for specific SMT assembly duties or as a fully featured module offering placement speeds up to 15,000cph. The *ii-A1* is ultra flexible and designed to drive productivity and boost yields.



Level-up your line

The sole purpose of the *ii-A2* module is to bring balance to the SMT assembly line. Equipped with a pair of high-speed Pulsar pipette heads, this machine acts as a chipshooter to take on the workload from other Europlacer machines in the line. With placement speeds up to 50,000cph, the *ii-A2* levels up the line by providing a resource that optimizes the placement process while maximizing the performance and throughput of Europlacer machines downstream. It has a feeder capacity of 164 x 8mm positions and handles components from 01005 profiles to 13mm x 13mm x 7mm dimensions - all in a compact module footprint. The *ii-A2* is designed to deliver fast, fully intelligent and highly integrated productivity.



INTEGRATED INTELLIGENCE

OPTIONS

- Offline preparation
- Stock Management
- Full Traceability
- PROMON Software
- Automatic conveyor width adjustment
- Paste & glue dispenser
- Heavy PCB kit
- Large PCB kit
- High resolution fixed camera
- Electrical tester
- Barcode feeders
- Bulk feeders
- Ball feeders for BGAs
- Flux feeder & PoP processing
- Tray sequencer

Both machines benefit from a smart approach to inline placement performance. They extend Europlacer's multi-award-winning atom platform range and present many opportunities for line configurations perfectly suited to specific SMT assembly tasks or productivity targets.

However, the resourceful module approach always allows manufacturers to retain maximum flexibility, providing the ability to rapidly adapt their production process to accommodate new products and emerging component technologies.

Evidenced by the compact footprint, the **ii-A1** and **ii-A2** require minimal floorspace but help to deliver maximum productivity. The module approach allows these machines to perform specific duties in a way that allows production engineers to optimize resource allocation and get the most out of the line as a result.

Both machines are fully compatible with all relevant atom platform innovations and options, and with all Europlacer intelligent feeder technologies. And both feature Europlacer's patented intelligent conveyor with board stops under full software control. Despite the compact module format, **ii-A1** and **ii-A2** can handle boards up to one meter (39 inches) in length.

THE MODULE FORMAT ADVANTAGE



atom

The atom platform range from Europlacer takes placement flexibility and placement speed to new levels. Equipped with all the historic technology developments that forged the reputation of the Europlacer brand in terms of reliability and flexibility, the new innovations brought to this platform consolidate our technical advances to deliver incredible performance.

The Pulsar high-speed head features eight intelligent nozzles capable of gang-picking. The *ii-A2* module deploys two of these innovative heads, characterized by advanced lubrication-free materials technology that reduces maintenance costs and service interventions. Pulsar's lightweight structure allows it to achieve speeds and accelerations that exceed all previous Europlacer platforms.

The Pulsar and Tornado heads each sit on their own independent gantries driven at both ends by synchronised linear motors. This robust structure not only enhances the reliability of fast axis movements, easily absorbing the forces of high accelerations, but also increases the machine's ability to accept long and wide PCBs.

Having a choice of placement head types in a compact module allows process engineers to allocate precisely the resources needed for production to the appropriate pick & place module.

In the *ii-A1* and *ii-A2* modules, as with the entire atom platform range, nothing has been left to chance. All peripherals have been designed to contribute to performance gains with total compatibility across the atom platform and beyond to other Europlacer platforms, delivering the greatest return on investment for assembly resources and accessories. With these new compact modules, integrated intelligence is now distributed along the entire production line.




SPECIFICATIONS

	iiA1	iiA2
COMPONENT RANGE	01005 TO 50MM X 50MM	01005 TO 13MM X 13MM
WITH FIXED CAMERA OPTION	99MM X 99MM (MORE ON DEMAND*)	---
MAX COMPONENT HEIGHT	34MM (31MM WITH 12 NOZZLES)	7MM
STANDARD FEEDERS	4MM TO 104MM TAPES	4MM TO 104MM TAPES
STANDARD FEEDERS	STICK, TRAY	STICK
SPECIAL FEEDERS	BULK, LABEL, SOLDER BALL	BULK, LABEL, SOLDER BALL
FEEDER CAPACITY	164 POSITIONS X 8MM	164 POSITIONS X 8MM
INTERNAL FEEDERS	MATRIX TRAYS	---
PLACEMENT HEADS	1 X 8 OR 12 NOZZLE TORNADO HEAD	2 X PULSAR HEADS
MAXIMUM PCB SIZE	1080MM X 715MM*	1088MM X 715MM*
MAX PLACEMENT RATE	14,000CPH (15,390 WITH 12 NOZZLES)	50,000CPH
IPC PLACEMENT RATE	11,580CPH (12,550 WITH 12 NOZZLES)22UM	40,000CPH
PLACEMENT ACCURACY	(QFPS) TO 46UM (CHIPS) @ 3 SIGMA	22UM (QFPS) TO 50UM (CHIPS) @ 3 SIGMA
* UNDER CERTAIN CONDITIONS		

As part of our policy of continuous development, specifications are subject to change without prior notice.




Europlacer Americas
 4640 E. Elwood St.
 Suite 14
 Phoenix, AZ 85040
USA
 contact@europlacer.com
 +1 480 672 1100


Europlacer Asia Pacific
 No. 10, Lane 3, Anzhong St.
 MIT Industrial Park,
 Luzhu District,
 Taoyuan City, **Taiwan** 338
 contact-apac@europlacer.com


Europlacer China
 Floor 1, Building 1
 No.80 Huashen Road,
 Shanghai Waigaoqiao
 Free Trade Zone,
P.R.China 200131
 contact-china@europlacer.com
 +86 (021) 5868 3500


Europlacer France
 Route de Cholet
 85620 Rocheservière
France
 contact@europlacer.fr
 +33 (0)2 5131 0303


Europlacer Germany
 Im Böning 24
 63695 Glauburg
Germany
 contact@europlacer.de
 +49 (0)60 419 692 300


Europlacer Italy
 Via Flavia, 35
 34148 Trieste
Italy
 contact@europlacer.it
 +39 (0)40 832 0563


Europlacer Spain
 AV Atenas 127
 19170 El Casar
 Guadalajara
Spain
 contact@europlacer.es
 +34 (0)673 171 249


Europlacer UK
 30 Factory Road
 Upton Industrial Estate
 Poole, Dorset BH16 5SL
UK
 contact@europlacer.co.uk
 +44 (0)1202 266500