



## **CoaxCenter 6000**

**The all-in-one solution for processing single-conductor wires and coaxial cables**

- Versatile fully automatic machine with minimal space requirements
- Unrivalled processing precision
- Fully integrated 360° wire end monitoring
- Maximum process reliability and stability
- Extremely short cable lengths can be processed fully automatically

CUT STRIP TERMINATE

# CoaxCenter 6000

## Concept

The CoaxCenter 6000 fully automatically processes a wide variety of cable types and applications to high-precision quality. Straighteners and linear feed unit ensure optimal alignment. Even a short cable overhang can be processed accurately.

The simultaneous processing of both cable ends combined with a fast, yet gentle, cable transport make the CoaxCenter 6000 one of the most effective fully automatic machines on the market.

The quality monitoring of each layer and end of the cable integrated in the software enables consistent process reliability.

The CoaxCenter 6000 can be equipped with up to six processing stations. The possible applications are virtually limitless.

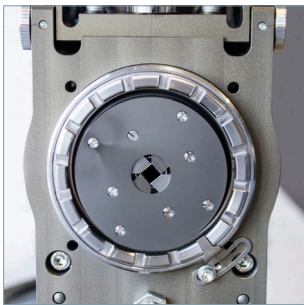
The swivel arm machine is a unique multi-talent that can be used to process cables for a wide variety of industries.

## Processing modules

- TinningStation 3000 tinning station
- PointingUnit 6000 chamfering station
- CrimpPress 150 crimping station with optional crimp force monitoring (ACO 08)
- RotaryUnit 6000 rotary cutting unit with integrated extraction system
- Sawing and cutting unit
- QCam 360 quality control system
- Linear feed unit

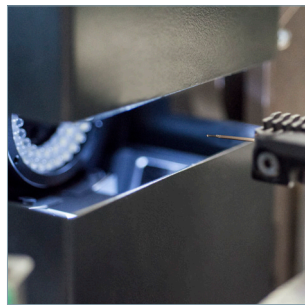
## Options

- Barcode scanner
- RoboticInterface 6000
- Wire straightener unit
- Status light



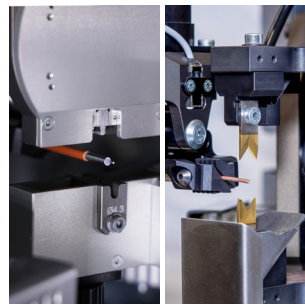
### RotaryUnit 6000

High-precision cable processing with the fastest rotary unit currently available and cable diameters ranging from 0.4 to 7.0 mm for maximum flexibility.



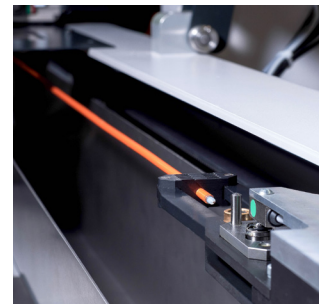
### QCam 360

The camera system checks the cable ends; reject parts are sorted out immediately and automatically reproduced.



### Cutting and sawing

The blade system features block, single and multi-blade heads. The sawing unit cuts cables quickly and at a perfect right angle. The inner conductors remain absolutely straight.



### Linear feed unit

Cable gripper and cable tension function ensure unparalleled length accuracy to within hundredths of a millimeter. Lengths of 11 to 1,500 mm are freely programmable.

Technical Data	
Processing Stations	Up to six stations
Raw Material Diameter	Max. 7.0 mm (0.27") with linear feed unit Max. 5.5 mm (0.21") with belt drive
Workpiece Length	Approx. 15 mm to 1 km (0.59" to 39370.1") - extremely short cable lengths, depending on the application
Conductor Cross-section	0.005 mm <sup>2</sup> to 2.5 mm <sup>2</sup> (40 AWG - 14 AWG)
Strip Length	Side 1: 0.1 mm - 58 mm (0.004" - 2.28") Side 2: 0.1 mm - 38 mm (0.004" - 1.49")
Feed Rate	Conveyor belt max. 5 m/s Linear feed unit max. 2.5 m/s
Dimensions (L x W x H), Depending on machine configuration	Min.: 1,722 x 900 x 1,442 mm (67.79" x 35.43" x 56.77") Height with open safety cover 2,177 mm (85.70") Max.: 3,033 x 1,182 x 1,472 mm (119.40" x 46.53" x 57.95") Height with open safety cover 2,347 mm (92.40")
Weight	Approx. 450 kg (992 lbs.), incl. basic machine and safety cover Approx. 630 kg (1.388 lbs.), incl. six processing stations and options
Power Supply	100/120 V AC, 200/240 V AC, 800 V A, 50/60 Hz
Compressed Air Connection	6 bar non-oil-lubricated, dried and filtered compressed air Average 65 l/min, maximum 400 l/min Hose 12/9 mm, maximum hose length 10 meters
CE Conformity	The CoaxCenter 6000 complies with the CE and EMC machinery directives relating to mechanical and electrical safety and electromagnetic compatibility.
Important Note	Schleuniger recommends that wire samples be submitted in cases where there is doubt as to the processing capabilities of a particular machine.

## To Be Precise.