



SawPolish Unit 6 Comfort



SawPolish Unit 6



SawPolish Unit 60

## SawPolish Units

### Sawing and Polishing Devices for Crimp Cross Section Analysis

- Three models for sawing and polishing a wide range of crimp connections
- Polishing disc is in line with the saw blade for fast and simple processing
- Compatible with Electrolyte Staining Unit and MacroZoom Unit 1.3 for a complete crimp cross section analysis
- Numerous sample holders are available for a variety of applications such as welding, potting and connector inspection

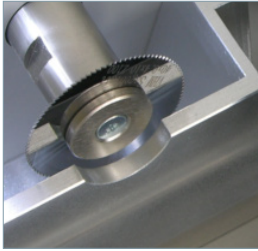
QUALITY ASSURANCE

# SawPolish Units

**Variety:** The SawPolish product family offers three models to cover a wide range of applications. Each model has its own specifications to meet varying budgets and production needs.

**Productivity:** The saw blade and polishing disc are aligned so that the sample can be cut and polished in one motion to minimize processing time.

**Capability:** The interchangeable and customizable sample holder allows a nearly endless application range.



Carbide saw blade for long life and precise sawing.



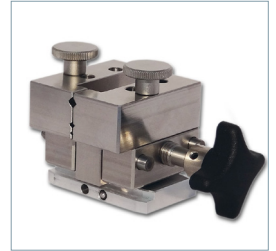
Polishing disc ensures a smooth and clean surface if needed.



Digital magnifier with 4x, 6x, 8x and 11x zoom (SPU 6 Comfort / Optional).



The adjustable mechanical stop with digital display ensures repeatable cutting positioning (SPU 6 Comfort)



A variety of sample holders make it possible to process a variety of crimp contacts.

Technical specification	SawPolish Unit 6	SawPolish Unit 6 Comfort	SawPolish Unit 60
Terminal Height	3 mm (0.12")	8 mm (0.31")	20 mm (0.79")
Saw Blade	Carbide (VHM) 40 x 10 x 0.4 mm (1.57 x 0.39 x 0.02")		Carbide 100 x 22 x 1.0 mm (3.94 x 0.87 x 0.04")
	Suitable for copper, aluminum, steel, alloy steel, stainless steel, titanium, bronze, brass, cast iron, gold, silver, inconel, nimonic, hastelloy, magnesium alloys, plastic		
Polishing Disc Diameter	100 mm (3.93")		
Sandpaper	100 mm (3.94"), grain size 1200		
Motor	$P_{max} \approx 85 \text{ Watt}$ $f_{rot} \approx 6000 \text{ min}^{-1}$	$P_{max} \approx 300 \text{ Watt}$ $f_{rot} \approx 9800 \text{ min}^{-1}$	$P_{max} \approx 450 \text{ Watt}$ $f_{rot} \approx 4000 \text{ min}^{-1}$ (incl. motor brake)
Blade / Polishing Motor speed	Adjustable	Adjustable	Fixed (optional: adjustable)
Additional Equipment	x	<ul style="list-style-type: none"> <li>■ Display for mechanical adjustments</li> <li>■ Digital magnifier (optional)</li> </ul>	x
Power Supply	100 – 240 VAC, 50/60 Hz		
Operating Temperature	0° – 50° C (32° – 122° F)		
Dimensions (L x W x H)	300 x 255 x 145 mm (11.8" x 10.0" x 5.7")	319 x 310 x 162 mm (12.6 x 12.2 x 6.4")	450 x 380 x 185 mm (17.7 x 14.9 x 7.3")
Weight	9.3 kg (20.5 lbs.)	12.8 kg (28.2 lbs.)	30 kg (66.1 lbs.)
Safety Class	IP 20		