

GLOBAL. AHEAD. SUSTAINABLE.



YOUR PRODUCTION.

DRIVEN BY KURTZ ERSA.

PREVENTION OF ASSEMBLY ERRORS
BY MEANS OF VISUAL VERIFICATION.

VERSA®GUIDE ELITE



FUNCTIONS OF ERSA VERSA®GUIDE ELITE

- Check for similar components
- Color inspection
- Step-by-step instructions, check for wrong components
- Structure inspection
- Check of character strings for barcodes
- Recording of the finished work

ADVANTAGES ERSA VERSA®GUIDE ELITE

- Uses image recognition to prevent errors
- Easy to operate as all-in-one system
- Supports digitalization of your workplace

VERSA®GUIDE Elite is a support and verification system for correct component placement or final assembly work. It prevents assembly errors and therefore cuts costs for time-consuming reworking. The VERSA®GUIDE Elite's smart camera has its own processor and therefore does not require an additional PC.

All you need is a keyboard with mouse and a monitor. The criteria to be checked can easily be set and monitored using image recognition software. Features such as character strings, patterns, colors and textures are reliably recognized. Individual components or even assembly instructions can be read into the software as images and made available.

VERSA®GUIDE Elite then guides the user through the single work steps and provides immediate feedback. The next step is not displayed until everything is okay.

Log data is backed up for each work step to ensure traceability. The serial number can also be stored using a barcode scanner.

VERSA®GUIDE Elite can be set up as a single camera system for existing workplace concepts. Or Ersas will supply you with the complete VERSA®GUIDE Elite workstation, fine-tuned to your requirements with additional accessories such as roller conveyor, barcode scanner, lifting unit, etc.



VERSA®GUIDE ELITE – OFFLINE WORKSTATION

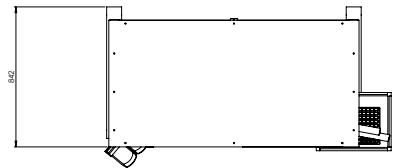
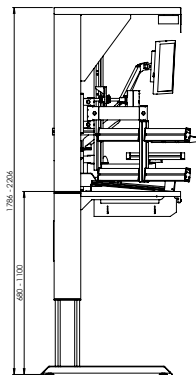
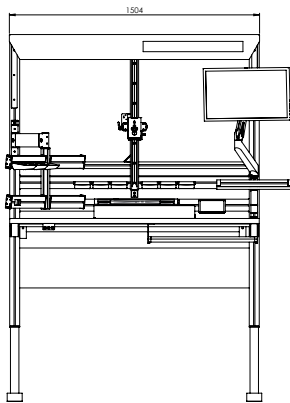


SCOPE OF DELIVERY

- VERSAGUIDE camera
- Tripod head & adapter plate
- I/O cable, 10 m
- Power supply
- Initial program creation
- Monitor incl. mounting bracket and cable
- Mouse and keyboard incl. mounting bracket
- SD card, 32 GB
- Power strip
- USB hub
- Network cable, 5 m
- Workbench with manual height adjustment
- Framework and illumination

AVAILABLE OPTIONS:

- Workbench with electric height adjustment
- Shelves, tiltable
- Support bar with storage boxes
- Swivelling arm left and/or right
- Vertical camera adjustment
- Adjustable product carrier frame



TECHNICAL DATA	CAMERA – STANDARD LENS	CAMERA – HIGH-RESOLUTION LENS
Order number	MH-VG-OAP	MH-VG1-OAP
Work distance	400 – 800 mm	400 – 800 mm
Field of view at 400 mm distance	300 (L) x 150 (B); smallest recognizable structure 5 mm	150 (L) x 75 (B); smallest recognizable structure 2,5 mm
Field of view at 800 mm distance	600 (L) x 300 (B); smallest recognizable structure 10 mm	300 (L) x 150 (B); smallest recognizable structure 5 mm
Workbench dimensions (L x W x H)	1,500 x 850 x 2,250 mm	1,500 x 850 x 2,250 mm

VERSA®GUIDE PRO/ ULTRA



FUNCTIONS OF ERSA VERSA®GUIDE ELITE

- Part recognition
- Read codes
- Contour inspection
- Provide assistance

ADVANTAGES ERSA VERSA®GUIDE PRO

- Reliable polarity detection
- Code pipeline to soldering machine
- Process interlock

VERSA®GUIDE Pro is Elite's major expansion stage and helps in the assembly of electronic modules by providing 100 % control. By saving on rework, reducing complaints or training of non-expert employees, the added value remains on site.

To achieve this, VERSA®GUIDE Pro works with a high-resolution camera and lens. An illumination panel is supplied for homogeneous illumination of the assemblies. Constant lighting conditions are essential for optical inspection.

With a working distance of 1200 mm between the camera and the assembly level, the user can work as usual without any restrictions.

The corresponding software runs on a powerful computer of the latest generation.

Once the component is mounted, VERSA®GUIDE Pro checks whether it is the right component and whether it has been correctly installed. The check is performed within a few seconds. Individual features of the component such as position, color, contour or dimensions are decisive. The inspection takes place in the field of view of the camera. This is approx. 640 x 480 mm in size.

VERSA®GUIDE Pro is equipped with an I/O module for process-safe interlocking of a workflow. By connecting to the Ersas code pipeline, codes read by VERSA®GUIDE Pro can be transmitted directly to a soldering machine.

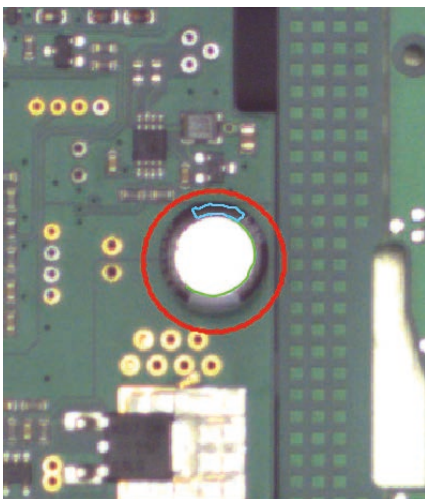


VERSA®GUIDE PRO/ ULTRA



FUNCTIONS OF ERSa VERSA®GUIDE ELITE

- Part recognition
- Read codes
- Contour inspection
- Provide assistance

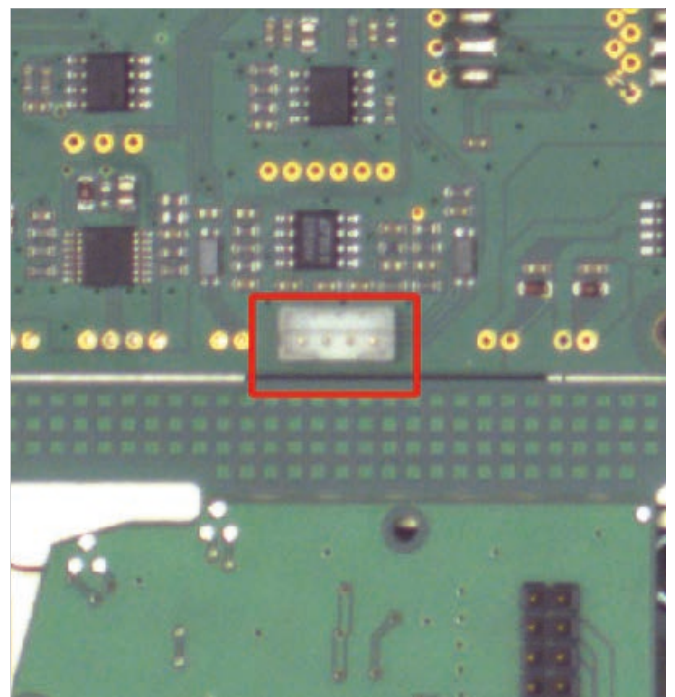
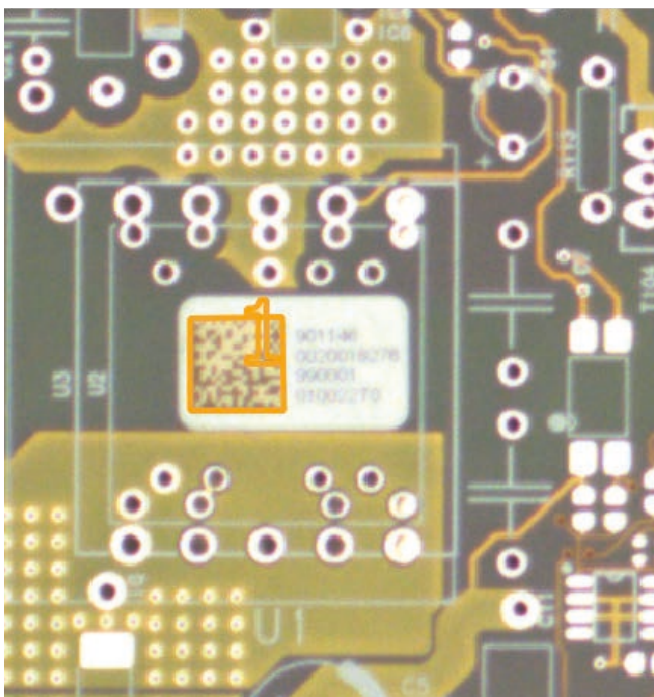


With VERSA®GUIDE Pro it is easy to eliminate the typical sources of error of THT assembly. As an example an electrolytic capacitor with a polarity mark is shown here. The red mark around the component indicates the defective position (polarity).

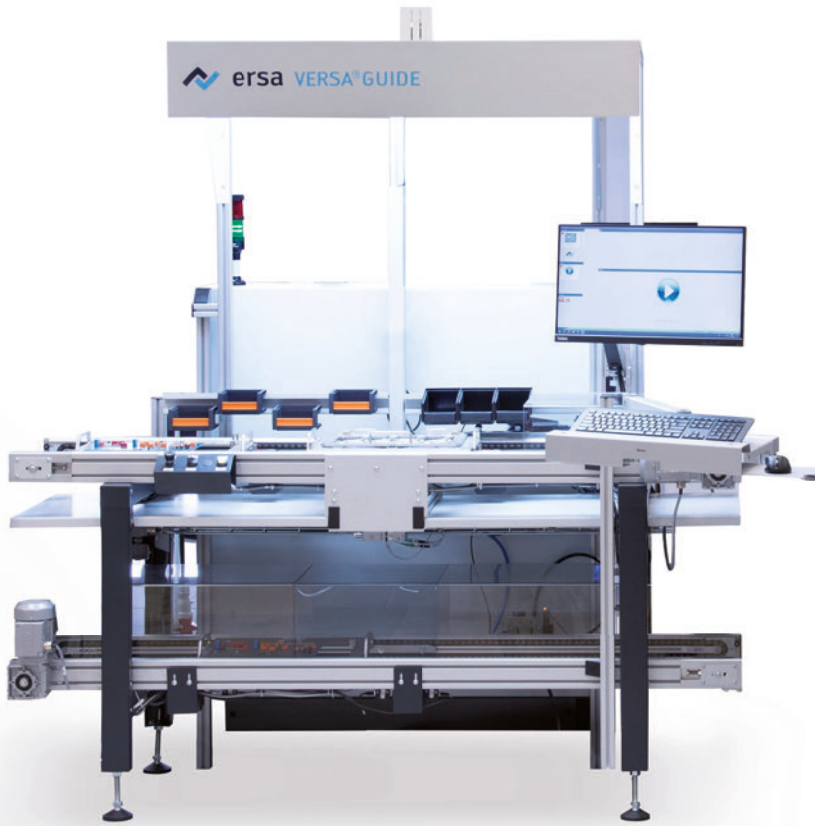
The camera can read codes directly from a height of 1200 mm. The contrast can be additionally enhanced by filters. Common codes, e.g. DMC, QR, barcode can be read.

The software can also support small features, which are crucial for a correct function. Pin strips can be secured against incorrect installation.

For additional process reliability, VERSA®GUIDE Pro can be configured to give an approval signal to the subsequent work steps only after successful testing.



VERSA®GUIDE PRO/ ULTRA – OFFLINE

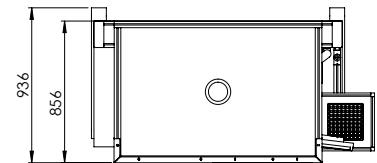
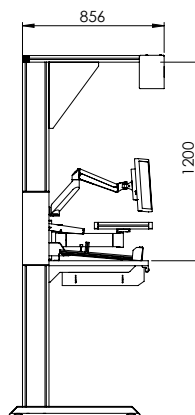
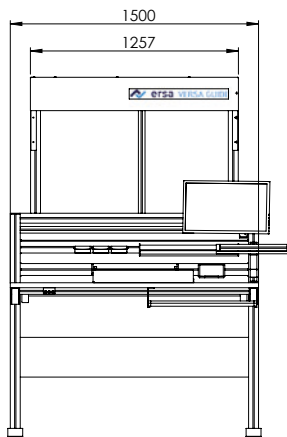


SCOPE OF DELIVERY

- Image processing computer
- Industrial camera 18 MP
- Lens 12 mm
- Lighting panel 1200 x 800 mm
- Digital I/O - Module
- Initial program generation
- Monitor incl. bracket and cable
- Mouse and keyboard incl. mounting bracket
- Power outlet strip
- Working table, manually height adjustable
- Construction and lighting

AVAILABLE OPTIONS:

- Workbench with electric height adjustment
- Shelves, tiltable
- Support bar with storage boxes
- Swivelling arm left and/or right
- User administration (1/ 2/ unlimited)
- Programs (5/ 15/ unlimited)
- Codes (+ OCR)
- Tolerances for BV (small tolerances / any)



TECHNICAL DATA	PRO	ULTRA
Order Number	MH-VG-PRO-0	MH-VG-ULTRA-0
Work distance	1200 mm	1200 mm
User administration	1 User	Unlimited users
Create programs	5 programs	Unlimited programs
Read codes	All common codes	Codes + OCR
Tolerances	Small tolerances	Any tolerances

VERSA®GUIDE PRO/ ULTRA – INLINE

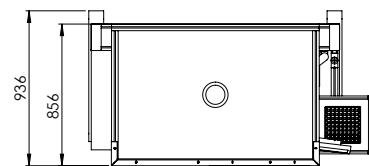
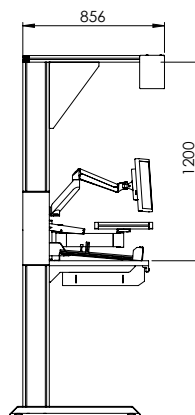
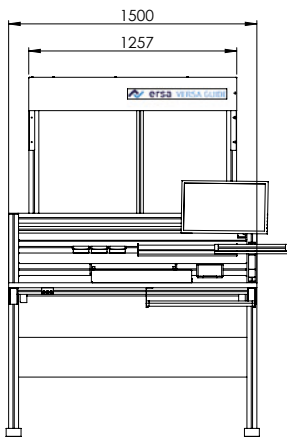


SCOPE OF DELIVERY

- Image processing computer
- Industrial camera 18 MP
- Lens 12 mm
- Lighting panel 1200 x 800 mm
- Digital I/O - Module
- Initial program generation
- Monitor incl. bracket and cable
- Mouse and keyboard incl. mounting bracket
- Power outlet strip
- Working table, manually height adjustable
- Construction and lighting

AVAILABLE OPTIONS:

- Workbench with electric height adjustment
- Shelves, tiltable
- Support bar with storage boxes
- Swivelling arm left and/or right
- User administration (1/ 2/ unlimited)
- Programs (5/ 15/ unlimited)
- Codes (+ OCR)
- Tolerances for BV (small tolerances / any)



TECHNICAL DATA	PRO	ULTRA
Order Number	MH-VG-PRO-0	MH-VG-ULTRA-0
Work distance	1200 mm	1200 mm
User administration	1 User	Unlimited users
Create programs	5 programs	Unlimited programs
Read codes	All common codes	Codes + OCR
Tolerances	Small tolerances	Any tolerances



WE ARE THERE FOR YOU WORLDWIDE.

GERMANY

Ersa GmbH
Leonhard-Karl-Str. 24
97877 Wertheim/Germany
Phone +49 9342 800-0
info@ersa.de
www.ersa.com

FRANCE

Kurtz Ersa France
Haguenau
kefrance@kurtzersa.com

AMERICA

Kurtz Ersa, Inc.
Plymouth, WI
usa@kurtzersa.com

MEXICO

Kurtz Ersa México, S.A. de C.V.
Guadalajara
info-kmx@kurtzersa.com

ASIA

Kurtz Ersa Asia Ltd.
Hongkong
asia@kurtzersa.com

CHINA

Kurtz Ersa Shanghai
Shanghai
info-esh@kurtzersa.com

VIETNAM

Kurtz Ersa Vietnam
Company Limited
Ho-Chi-Minh-City
info-kev@kurtzersa.com

In addition to our own branches, we have a tight network of more than 75 competent sales and service partners around the globe.