

eurolacer
HIGH MIX
PRODUCTIVITY

ii-A2



Boost Your Line



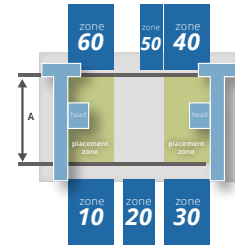
atom
range

ii-RC Software

- ▶ A simple and easy-to-use interface
- ▶ Ergonomic and intuitive operation

Loading Capacity

- ▶ Configurable zones - ii-Feed trolleys (ii-Cart), tape feeder or special feeder



Intelligent Conveyor

- ▶ Increase productivity without mechanical stops
- ▶ Automatically optimizes board stop position for maximum productivity

Boost Your Line

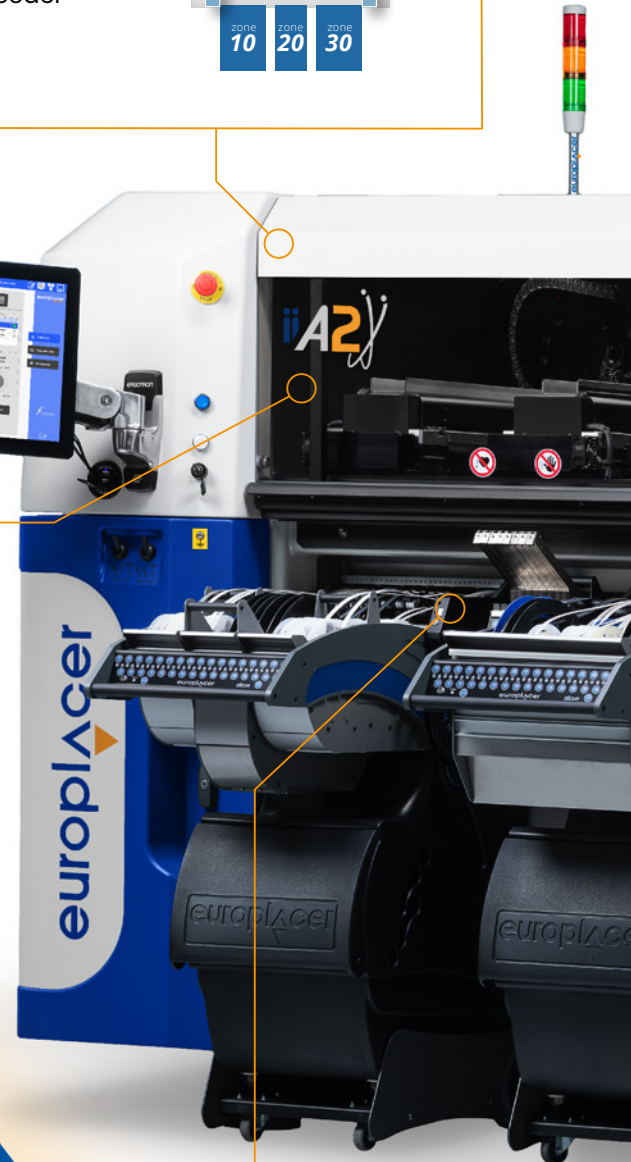
The sole purpose of the ii-A2 module is to bring balance to the SMT assembly line. Equipped with a pair of high-speed Pulsar pipette heads, this machine acts as a chipshooter to take on the workload from other Europlacer machines in the line. With placement speeds up to 52,000cph*, the ii-A2 levels up the line by providing a resource that optimizes the placement process while maximizing the performance and throughput of Europlacer machines downstream. It has a feeder capacity of 162 x 8mm positions and handles components from 01005 profiles to 13mm x 13mm x 7mm dimensions – all in a compact module footprint. The ii-A2 is designed to deliver fast, fully intelligent and highly integrated productivity.

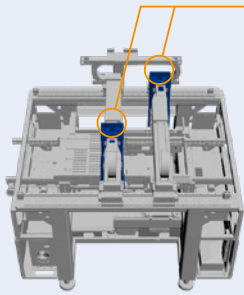
Flexibility ▶▶
Feeder capacity ▶▶
Speed ▶▶▶▶



NT Feeder

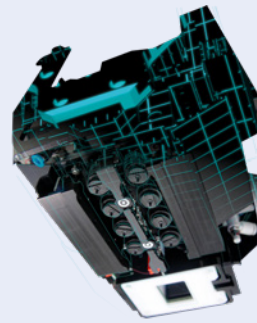
- ▶ From 4mm to 104mm width
- ▶ Component height up to 26.5mm





2 Pulsar Heads

- ▶ 8 nozzles
- ▶ Speed 52,000 CPH*
- ▶ Components up to 13 x 13 x 7mm



ii-Tab

- ▶ Mobility solution
- ▶ 10 software applications
- ▶ Support for Setup, Stock Management and Production

Smart Nozzles

- ▶ Reduced set-up time
- ▶ Nozzle type identifier
- ▶ Nozzles can be placed anywhere



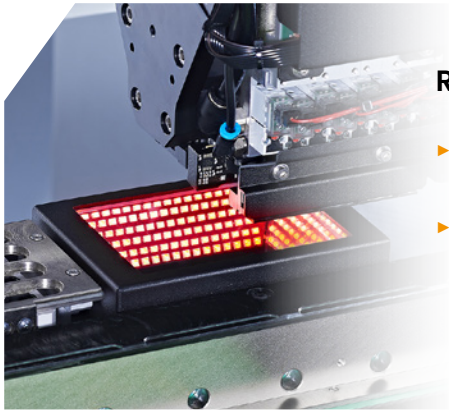
ii-Cart Intelligent Trolley

- ▶ Up to x33 8mm ii-Feed elements
- ▶ Accepts any mix of 8, 12, 16 or 24mm tapes

Machine compatible with all feeders in the Europlacer range, see Feeders brochure

* Speed per head 26,000CPH - Optimum test conditions in factory

Options



Rear Camera

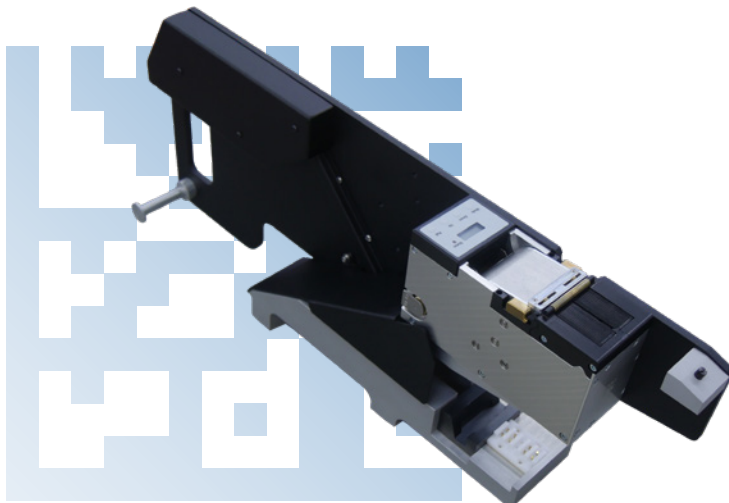
- ▶ Scan rear feeder components
- ▶ Save time and gain in productivity



Dispensing System

- ▶ Glue or paste dispensing
- ▶ 2 different systems: air or auger valve

Recommended Accessory



Traceability Option With Label Feeder

- ▶ Dispensing 1D and 2D labels
- ▶ Sticker size from 4 x 8mm to 55 x 55mm
- ▶ Add serial number data to traceability option

Benefits



Flexibility

- ▶ **Component range:**
From 01005
up to 13 x 13 x 7mm
- ▶ **Feeder capacity:**
162 x 8mm feeders



Connectivity



- ▶ **ii-Tab:**
Connect your Pick and Place machine to our mobile solution to help you prepare and monitor your production line.
- ▶ **CFX 1.7 compatible:**
Easily connect the ii-A2 with all CFX compatible equipment in your production line.



Versatility

- ▶ **PCB range:**
From 60 x 45mm
to 1070 x 715mm and 10kg



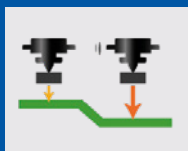
Speed Booster

Increase the speed of your line by adding an ii-A2 in front of a standalone machine.

Features



3DPS

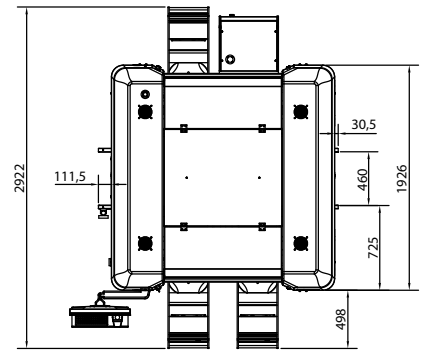
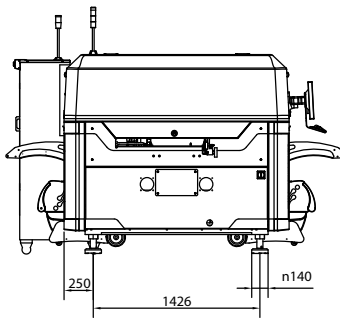
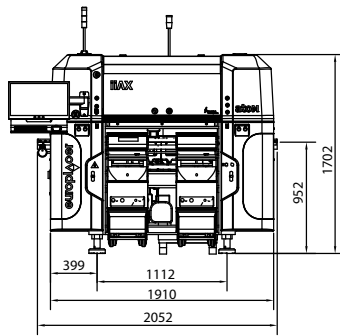


Real-time Z axis adjustment to compensate for any board warpage. No PCB support tooling pin needed.

AAS



Auto Adaptive Sequencing defines placement priorities and rules to avoid collision. It takes into account component and nozzle shapes, characteristics of the PCB and the trajectory of the heads.



Technical Specification

General	
Electrical	400V/210V three phase 50Hz/60Hz, 8kVA
Air	7 bar, 30l/min
Noise	<70dB (A)
Working temperature	18°C to 30°C
Humidity	20% to 80% RH non-condensing
Weight	1900 kg (without feeders and packaging)

Pulsar Head Specifications		
Technology	Pipette	
Nozzle position	8	
Placement speed	Max	26 000 Cph (takt time)
Placement accuracy	Chips	50 µm @3σ Cpk ≥ 1.0
	QFP	22 µm @3σ Cpk ≥ 1.0
Component range	Size	Standard 0.4 x 0.2 mm (01005) - 13 x 13 mm
	Height	Up to 7 mm
	Type	Chips, MELFs, electrolytic capacitors, SO, PLCC, QFP, TSOP, QFN, µBGA, LGA, CSP, Flip chip, through hole and odd-form devices (limited to 13x13mm)
	Min lead pitch	0.3 mm (QFP) / 0.4 mm (µBGA)
	Min lead/ball size	0.15 mm (QFP) / 0.2 mm (µBGA)

ii-A2 Specifications		
Configuration	2 x Pulsar Heads 2 x Independent X/Y linear gantries	
	Standard	Options
'Smart' nozzle tool banks	2 x 40 positions in front	Up to 2 x additional 40 positions at rear
Component analysis	2 x 'fly over' high resolution digital cameras in front	Up to 2 x 'fly over' high resolution digital cameras at rear
Capacity	162 x 8mm tape feeder position	
Feeders	Full range of Europlacer intelligent feeders for 4mm to 104mm tapes, plastic sticks, wide range of matrix trays feeders, sequencer, short tape feeders, bulk feeders, fluxer, label feeder, solder ball feeder	
Board Handling	Minimum PCB size	60 mm x 45 mm
	Max length	1070mm
	Max width	460 mm as standard / 510 mm (without camera+nozzles at rear) / 715 mm (without feeder at rear)
	Thickness	0.5 mm to 10.0 mm
	Max weight	3 Kg / (10 Kg as an option)
	Board clearance	Under clearance: 25mm Edge clearance: 3mm
	Board location	Full edge clamping with fiducial correction
	Conveyor type	Patented intelligent tracking system: without mechanical stopper, fully flexible, real-time status, contributes to throughput optimization
	Transport criteria	Left to right, fixed front rail, height-adjustable 890mm to 975mm, SMEMA interface

Options

- ▶ 2 x 'fly over' high resolution digital cameras at rear
- ▶ 2 x additional 40 positions at rear
- ▶ Electrical component testing
- ▶ Glue dispenser
- ▶ Heavy PCB kit for conveyor (10 kgs)
- ▶ Wide PCB kit 715mm (with no feeder at the rear)
- ▶ Rear operating station

As part of our policy of continuous development, specifications are subject to change without notice.

www.europacer.com

Europlacer UK
30 Factory Road, Upton Industrial Estate,
Poole, Dorset BH16 5SL
United Kingdom
contact@europacer.co.uk
+44 (0)1202 266500

Europlacer Asia Pacific (excl. China)
No. 126-16, Section 4,
Zhongxiao East Road, Da'an District,
Taipei City 106071
contact-apac@europacer.com
+886 (0)3 356 2778 (Giantec Electronics Inc.)

Europlacer Americas
4640 E. Elwood St., Suite 14,
Phoenix, AZ 85040
USA
contact@europacer.com
+1 (480) 672 1100

Europlacer Italy
Via Flavia, 35,
34148 Trieste
Italy
contact@europacer.it
+39 (0)40 832 0563

Europlacer France
Route de Cholet,
85620 Rocheservière
France
contact@europacer.fr
+33 (0)2 5131 0303

Europlacer Spain
AV Atenas 127,
19170 El Casar Guadalajara
Spain
contact@europacer.es
+34 (0)673 171 249

Europlacer China
Floor 1, Building 1, No.80 Huashen Road,
Shanghai, Waigaoqiao, Free Trade Zone,
200131, China
contact-china@europacer.com
+86 (021) 5868 3500

Europlacer Deutschland GmbH
Sebastian-Kneipp-Strasse 41
60439 Frankfurt am Main
Germany
contact@europacer.de