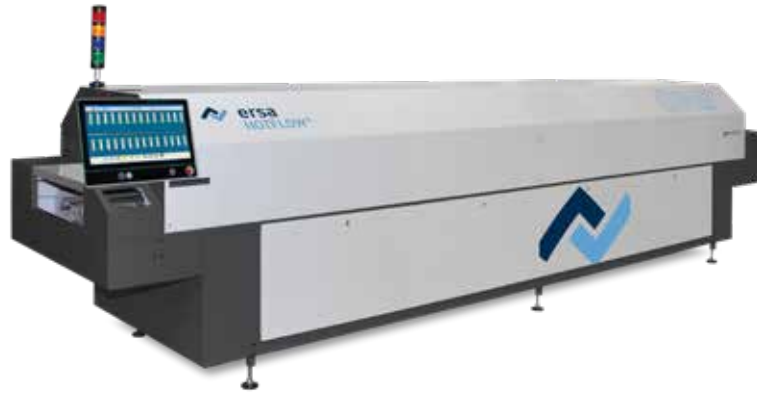


Ersa HOTFLOW ONE

High-quality reflow soldering system with outstanding price-performance ratio for best soldering results

GLOBAL. AHEAD. SUSTAINABLE.



Ersa HOTFLOW ONE

Economically priced reflow system for maximum quality and minimal manufacturing cost

An excellent price-performance ratio and outstanding economic efficiency are key characteristics of the HOTFLOW ONE reflow soldering systems. They are the new Ersa entry-level models for the reflow process.

Based on over 35 years of experience and know-how in this soldering technology, economic and technical solutions have been optimally combined. Thus, the ideal thermal performance, a good cross profile and best zone separation ensure excellent soldering results.

As usual with Ersa, only high-quality and proven components are used in the HOTFLOW ONE to ensure top reliability. And of course, any necessary maintenance and cleaning work is extremely easy to perform, ensuring maximum machine availability.

No concessions were made with the control system either: HOTFLOW ONE is equipped with a high-quality PLC control system and is operated via an industrial PC with touchscreen. The user-friendly machine visualization allows easy programming and retains all necessary

operating and process data. The soldering protocol, which is already available with the standard configuration, is designed according to the ZVEI (German Electro and Digital Industry Association) specification and thus offers the best prerequisites for traceability applications.

The HOTFLOW ONE also impresses with its particularly attractive price and thus, together with highest machine availability, ensures best TCO values and fast ROI.



Unique technology advantages

- Dual track transport increases throughput
- Optimized heat transfer, minimized ΔT , zone separation
- Internal cooling
- Lowest energy consumption
- Removable heating modules top and bottom
- Low-mass center support

Optimized heat transfer, minimized ΔT and better zone separation



Low-mass center support

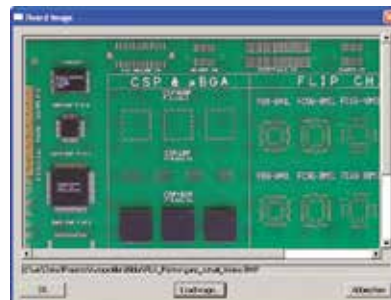
Integrated
Bluetooth data
transfer.
Real-time data
transfer and
display

Features Ersas HOTFLOW ONE

- Top- and bottom-side preheating
 - Top- and bottom-side convection modules in the soldering zone
 - Top- and bottom-side convection modules in the cooling zone
 - Low-mass conveyor, 516 mm
 - Low-mass dual track conveyor
 - Low-mass support tubes, 510 mm (20") width
 - Low-mass center support 1 to 2
 - Controlled width adjustment for conveyors and center support
 - Automatic chain lubrication
 - Industrial PC with touchscreen
 - Status indication light
 - Emergency power supply (conveyor, hood, PLC, PC)
 - Temperature measurement device (Sensor Shuttle)
 - Autoprofiler
 - Adjustable fan speed
 - Dualspeed
 - Energy consumption management
 - Energy measurement
 - Hermes interface
 - Kurtz Ersas GATE
 - Safety conveyors
- Standard Option

Software highlights

- ERSASOFT process data recorder
- User-friendly ERSASOFT machine control
- Autoprofiler for rapid offline profiling
- Job management
- Online support



Ersas Autoprofiler: Easy offline profiling for highest machine uptimes



Automatic process evaluation with 6 parameters - display of gradients with up to 17 profiles

HOTFLOW ONE – Technical Data

Dimensions (Basic machine)	HOTFLOW ONE 14	HOTFLOW ONE 20
Length:	4,770 mm	6,265 mm
Width:	1,350 mm	1,350 mm
Height:	1,375 – 1,535 mm	1,375 – 1,535 mm
Height (open):	1,705 – 1,865 mm	1,705 – 1,865 mm
Weight:	approx. 1,450 kg	approx. 1,900 kg
Paint:	RAL 7035/7016	RAL 7035/7016
Conveyor system		
Working width:	45 – 516 mm	45 – 516 mm
Working width (PCB center support):	45 – 516 mm	45 – 516 mm
Board clearance (standard):	+35/-37 mm	+35/-37 mm
Center support pin height:	15 mm	15 mm
Conveyor speed:	20 – 200 cm/min	20 – 200 cm/min
Conveyor height from floor:	820 – 980 mm	820 – 980 mm
Pin-and-chain conveyor:	3 mm edge clearance (option 4 mm, 5 mm)	3 mm edge clearance (option 4 mm, 5 mm)
Process zone		
Process length:	3,345 mm	4,840 mm
Heating zone:	2,610 mm	3,725 mm
Cooling zone:	735 mm	1,115 mm
Infeed/outfeed zone:	630/775 mm	630/775 mm
Process chamber width:	approx. 700 mm	approx. 700 mm
Heating system		
Convection share:	100%	100%
Gas flow per module:	approx. 500 m ³ /h adjustable	approx. 500 m ³ /h adjustable
Convection modules:	7 top/7 bottom	10 top/10 bottom
■ Preheating:	5 top/5 bottom	7 top/7 bottom
■ Soldering zone:	2 top/2 bottom	3 top/3 bottom
Nominal rating per module:	3.3 kW	3.3 kW
Nominal rating last module:	4.5 kW	4.5 kW

Cooling	HOTFLOW ONE 14	HOTFLOW ONE 20
Cooling zone:	2-stage version	3-stage version
Coolant:	Air	Air
Ambient temperature:	max. 32 °C	max. 32 °C
Electrical data		
Power:	5-wire-system, 3 x 400 V, N, PE	5-wire-system, 3 x 400 V, N, PE
Power tolerance range:	±10 %	±10 %
Frequency:	50/60 Hz	50/60 Hz
Max. fuse rating:	3 x 80 A	3 x 80 A
Nominal rating:	69 kW	92 kW
Reduced rating:	33 kW	44 kW
Continuous rating for operation:	approx. 11 – 14 kW	approx. 12 – 16 kW
Safety devices		
Main switch:	1	1
Emergency-Stop buttons:	2	2
Exhaust monitors:	2	2
Exhaust rating		
Exhaust stacks:	2 stacks, 150 mm ø each	2 stacks, 150 mm ø each
Exhaust volume:	feeding: 300 m ³ /h	feeding: 300 m ³ /h
	discharge: 400 m ³ /h	discharge: 400 m ³ /h
Exhaust monitoring per stack:	integrated	integrated
Noise level		
Permanent noise level:	< 65 dB (A)	< 65 dB (A)

Worldwide presence

With local representatives and our own sales and service offices:

America

Kurtz Ersä, Inc.
1779 Pilgrim Road
Plymouth, WI 53073
USA
Phone +1 920 893 3772
aus den US: 1 800 363 3772
usa@kurtzersa.com
www.ersa.com

Mexico

Kurtz Ersä, S.A. de C.V.
Av. Lopez Mateos Sur Núm. 1450 Int. 7
Col. Las Villas (Plaza las Villas)
Tlajomulco de Zúñiga, Jalisco
C.P. 45643
México
Phone +52 33 15 93 18 63
info-kmx@kurtzersa.com
www.ersa.com

Asia

Kurtz Ersä Asia Ltd.
Unit 03-05, 8th Floor
One Island South
No. 2 Heung Yip Road
Wong Chuk Hang
Hongkong
China
Phone +852 2331 2232
asia@kurtzersa.com
www.ersa.com

China

Ersä Shanghai
Room 720, Tian Xiang Building
No. 1068 Mao Tai Rd.,
Shanghai 200336
China
Phone +86 213126 0818
info-esh@kurtzersa.com
www.ersa.com

Phone +49 9342 800-0

Fax +49 9342 800-127

info@ersa.de

www.ersa.com

Vietnam

Kurtz Ersä Vietnam Company Limited
B916 Road 3, Kizuna 2 Factory Area, Lot
B4-3-7-8, Tan Kim IP, Can Giuoc Dist.
Long An Province, Vietnam
Phone +84 2723 733 682
info-kev@kurtzersa.com
www.ersa.com

India

Kurtz Ersä India
Smart Production Technologies
Private Limited
Plot Nr 18, Survey No. 43
KA 560100 Bangalore
Telefon: +91 973 954 5461
india@kurtzersa.com
www.kurtzersa.com

France

Kurtz Ersä FRANCE
2, Avenue de Wissembourg
67500 Haguenau
France
Phone: +33 6 07 78 01 87
kefrance@kurtzersa.com
www.ersa.com

Ersä GmbH

Leonhard-Karl-Str. 24

97877 Wertheim/Germany