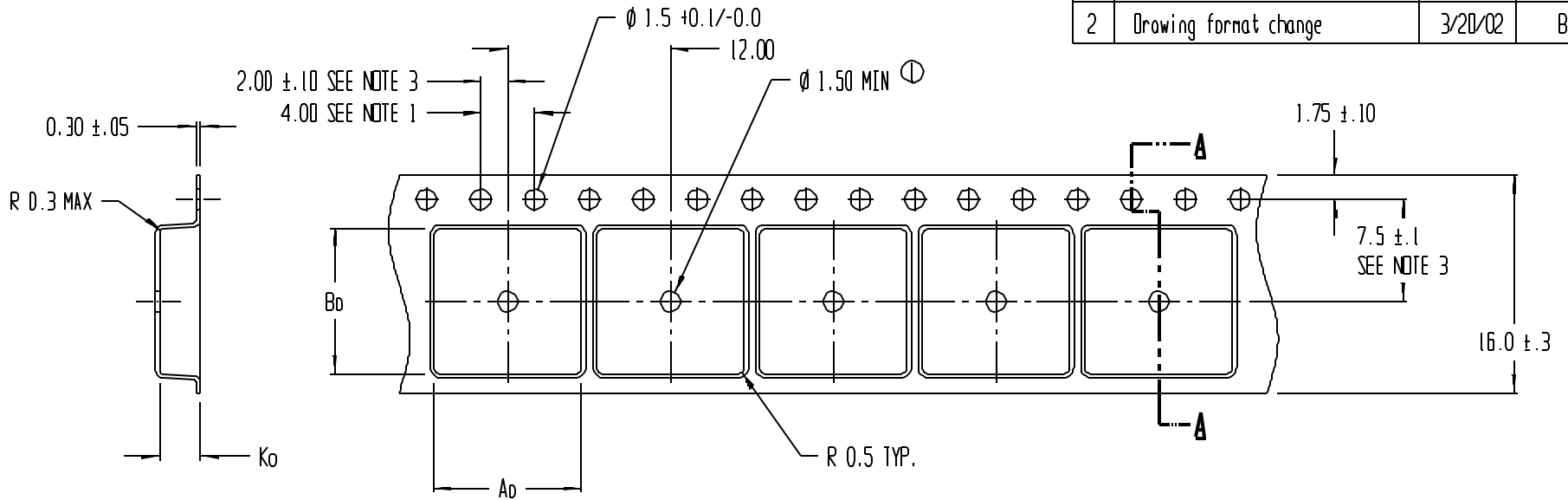


REVISIONS			
REV	DESCRIPTION	DATE	APPROVED
1	Pocket Hole was 1.6 + 1.0/-0.1	3/2/94	T.S.
2	Drawing format change	3/20/02	BTH



SECTION A - A

Ao = 10.90
 Bo = 10.70
 Ko = 3.00

- NOTES:
1. 10 SPROCKET HOLE PITCH CUMULATIVE TOLERANCE ±0.2
 2. CAMBER IN COMPLIANCE WITH EIA 481
 3. POCKET POSITION RELATIVE TO SPROCKET HOLE MEASURED AS TRUE POSITION OF POCKET, NOT POCKET HOLE

ADVANTEK			
TITLE ADVANTEK PART DRAWING NUMBER SO-16L-A SOIC-16L WIDE BODY CARRIER TAPE			
TOLERANCES - UNLESS NOTED 1PL ±.2 2PL ±.10	MATERIAL PS+C	ALL DIMENSIONS IN MILLIMETERS DWG SIZE B	
DRAWN BY BJD/BTH	DATE 12/28/88	SCALE 3:1	SHEET 1 OF 1
REFERENCE NO.	DWG NO. A0103-89-9	REV 2	